

30

MARQUETTE COUNTY
MICHIGAN
RECEIVED FOR RECORD

1993 SEP 30 PM 4:39

LAND CORNER RECORDATION CERTIFICATE
Filing Requirement of Act 74, Mich. P.A. 1970

Patricia L. Mackay
REGISTER OF DEEDS

For corners in

Marquette <small>(County)</small>	Located In:	Corner Code //
1. Public Land Survey	T R	
	T R	
	T R	
	T R	
2. Property Controlling in Section	S 10 T 46N R 25W	4,8,10,11
	S T R	
3. Miscellaneous Property in Sec.	S T R	
	S T R	

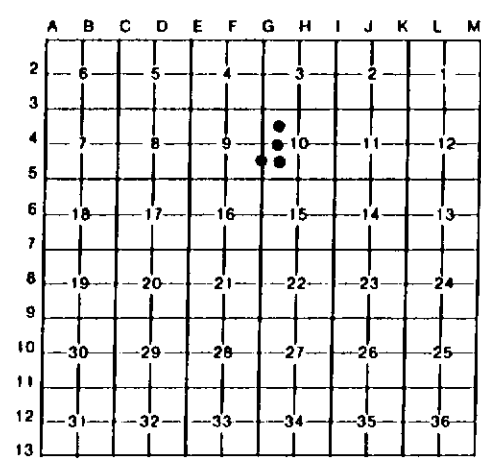
Liber 5 R.C. Page 390

Register of Deeds Stamp & File Number

- 4. Lot No. _____, Recorded Plat _____
- 5. Private Claims _____

I, Paul R. Bressette, in a field survey on July, 1993, do hereby certify that under requirements of P.A. 74, Michigan P.A. of 1970, the corner points mentioned in lines 1 and 2 above were in conformance with regulations and rules therefore as required in the current manual of survey instructions of the United States Department of the Interior, Bureau of Land Management or by a decree of a Court of Law and/or that the corner points mentioned in lines 3, 4 and 5 above were in conformance with the rules of the Michigan Board of Land Surveyors or by a Decree of a Court of Law; established, re-established, monumented, re-monumented, recovered, found as expressed below:

NOTE: Not more than 4 corners, all in the same town and range, may be recorded on this certificate.



A. Description of original monument and accessories and/or subsequent restoration:

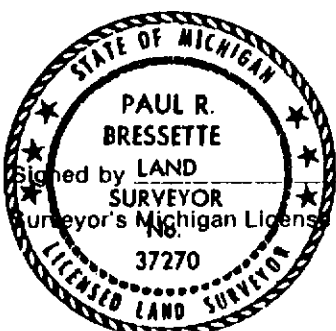
- 4 Northwest one-sixteenth corner of Section 10. Not set in original survey, no evidence of subsequent establishment.
- 8 West one-sixteenth corner of Section 10. Not set in original survey, no evidence of subsequent establishment.
- 10 South one-sixteenth corner common to Sections 9 and 10. Not set in original survey, no evidence of subsequent establishment.
- 11 Southwest one-sixteenth corner of Section 10. Found 1" x 36" iron pin leaning against a tree.

B. Description of corner evidence found and/or method applied in restoring or reestablishing corner:

- 4 Corner position established at the intersection of the north and west one-sixteenth lines of Section 10.
- 8 Corner position established at mid-point and on-line between the West Quarter and Center Quarter corners of Section 10.
- 10 Corner position established at mid-point and on-line between the Southwest and West Quarter corners of Section 10.
- 11 Found iron pin was not set in the ground and 130 feet south of monumented position. No witnesses were visible, and no other evidence was found indicating where it was placed. Corner position established at the intersection of the south and west one-sixteenth lines of Section 10.

C. Description of monument for corner and accessories established to perpetuate locating the position of the corner:

4	DNR Mon.	8	DNR Mon	10	DNR Mon.	11	DNR Mon
8"	J.Pine N65E 28.85'	9"	J.Pine N81E 46.2'	9"	J.Pine N44E 13.25'	9"	J.Pine S89E 14.95'
7"	J.Pine S10E 33.35'	9"	J.Pine S50E 31.1'	5"	J.Pine S66E 59.9'	10"	J.Pine s04W 27.6'
9"	J.Pine S42W 36.65'	7"	J.Pine S28W 17.3'	5"	J.Pine S37W 10.25'	7"	J.Pine N88W 20.7'
7"	J.Pine N42W 44.25'	8"	J.Pine N55W 5.7'	5"	J.Pine N64W 23.6'	7"	J.Pine N04W 22.2'



Paul R. Bressette Date 9-30-93

Surveyor's Michigan License No. 37270