

MARQUETTE COUNTY  
MICHIGAN  
RECEIVED FOR RECORD  
1993 SEP 30 PM 4:39

LAND CORNER RECORDATION CERTIFICATE  
Filing Requirement of Act 74, Mich. P.A. 1970

*Patricia A. Munday*  
REGISTER OF DEEDS

For corners in

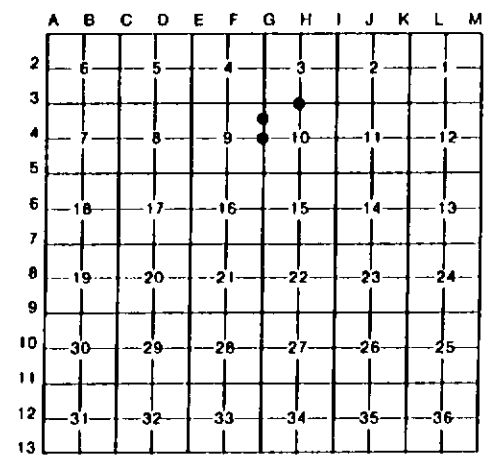
_____ Marquette _____ (County)	Located In:	Corner Code //
1. Public Land Survey	T 46N R 25W	G-4, H-3
	T R	
	T R	
	T R	
2. Property Controlling in Section	S 10 T 46N R 25W	3
	S T R	
3. Miscellaneous Property in Sec.	S T R	
	S T R	
4. Lot No. _____, Recorded Plat		
5. Private Claims _____		

Liberty 5 R.C. Page 389

Register of Deeds Stamp & File Number

I, Paul R. Bressette, in a field survey on June, 1993, do hereby certify that under requirements of P.A. 74, Michigan P.A. of 1970, the corner points mentioned in lines 1 and 2 above were in conformance with regulations and rules therefore as required in the current manual of survey instructions of the United States Department of the Interior, Bureau of Land Management or by a decree of a Court of Law and/or that the corner points mentioned in lines 3, 4 and 5 above were in conformance with the rules of the Michigan Board of Land Surveyors or by a Decree of a Court of Law; established, re-established, monumented, re-monumented, recovered, found as expressed below:

NOTE: Not more than 4 corners, all in the same town and range, may be recorded on this certificate.



A. Description of original monument and accessories and/or subsequent restoration:

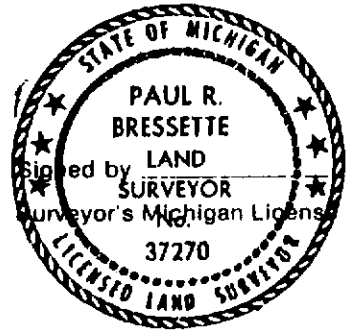
- G-4 Quarter Corner common to Sections 9 and 10. 1845: William Ives, D.S. Set wood post witnessed by: S. Pine 4 N52E 08 links; S. Pine 5 S52W 05 links.
- H-3 Quarter Corner common to Sections 3 and 10. 1845: William Ives, D.S. Set wood post witnessed by: S. Pine 10 S18E 18 links; S. Pine 10 N21E 53 links.
- 3 North One-sixteenth Corner common to Sections 9 and 10. Not set in original survey, no evidence of subsequent establishment.

B. Description of corner evidence found and/or method applied in restoring or reestablishing corner:

- G-4 No evidence of original survey or restoration found. Corner position re-established mid-point and on-line between the Northwest and Southwest Corners of Section 10.
- H-3 No evidence of original survey or restoration found. Corner position re-established mid-point and on-line between the Northeast and Northwest Corners of Section 10.
- 3 Corner position established mid-point and on-line between the Northwest and West Quarter Corners of Section 10.

C. Description of monument for corner and accessories established to perpetuate locating the position of the corner:

G-4	DNR Mon.	H-3	DNR Mon	3	DNR Mon
6"	J. Pine N67E 22.5'	5"	W. Pine N46E 10.1'	9"	J. Pine N82E 220.2'
7"	J. Pine S04E 23.1'	8"	J. Pine S24E 23.85'	11"	J. Pine S47E 217.3'
12"	J. Pine S78W 38.3'	6"	J. Pine S58W 32.25'	6"	J. Pine S53E 207.1'
9"	J. Pine N30W 20.25'	4"	R. Maple N08W 4.75'	8"	J. Pine N72W 214.0'



*Paul R. Bressette* Date 9-30-93