

MARQUETTE COUNTY
MICHIGAN
RECEIVED FOR RECORD

LAND CORNER RECORDATION CERTIFICATE
Filing Requirement of Act 74, Mich. P.A. 1970
AUG 26 PM 3:02

For corners in
Marquette
(County)

Located In: _____ Corner Code: 11

1. Public Land Survey T R
T R
T R
T R

2. Property Controlling S 15 T 46N R 25W 8, 11, 15
in Section S T R

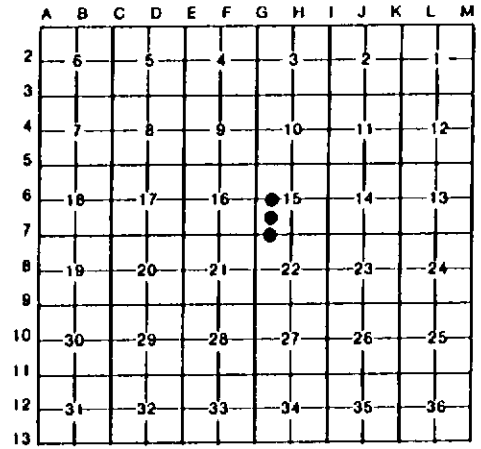
3. Miscellaneous S T R
Property in Sec. S T R

4. Lot No. _____, Recorded Plat _____

5. Private Claims _____

Richard G. Anderson
REGISTER OF DEEDS
Liber 5 R.C., Page 381
Register of Deeds Stamp & File Number

I, Paul Bressette, in a field survey on June 28, 19 93, do hereby certify that under requirements of P.A. 74, Michigan P.A. of 1970, the corner points mentioned in lines 1 and 2 above were in conformance with regulations and rules therefore as required in the current manual of survey instructions of the United States Department of the Interior, Bureau of Land Management or by a decree of a Court of Law and/or that the corner points mentioned in lines 3, 4 and 5 above were in conformance with the rules of the Michigan Board of Land Surveyors or by a Decree of a Court of Law; established, re-established, monumented, re-monumented, recovered, found as expressed below:

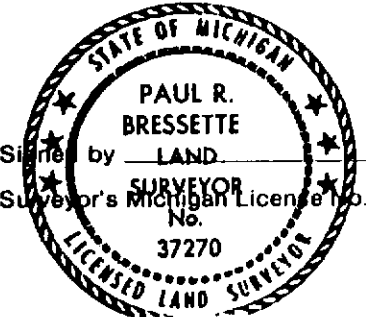


NOTE: Not more than 4 corners, all in the same town and range, may be recorded on this certificate.

- A. Description of original monument and accessories and/or subsequent restoration:
- 8 West one-sixteenth corner of Section 15. Found 1" iron pipe set by local landowner.
 - 11 Southwest one-sixteenth corner of Section 15. Found 1/2" rebar with plastic cap by RLS 20711.
 - 15 West one-sixteenth corner common to Sections 15 and 22. Found 1/2" rebar with plastic cap by RLS 20711.

- B. Description of corner evidence found and/or method applied in restoring or reestablishing corner:
- 8 Rejected found iron pipe. Local landowner claims he put iron pipe in after logging had occurred. Corner position established mid-point and on-line between the West quarter and center quarter corners of Section 15.
 - 11 Accepted capped rebar as found as it falls 0.30 feet from calculated position.
 - 15 Accepted capped rebar as found as it falls 0.17 feet from calculated position.

- C. Description of monument for corner and accessories established to perpetuate locating the position of the corner:
- | | | |
|--------------------------|-----------------------------|-----------------------------|
| 8 DNR Mon. | 11 1/2" rebar w/plastic cap | 15 1/2" rebar w/plastic cap |
| Wood Post East 1.0' | 4" J. Pine N70°E 36.0' | 11" J. Pine S35°E 3.55' |
| 11" J. Pine S70°W 56.85' | 3" J. Pine S07°E 30.85' | 12" J. Pine S20°W 10.74' |
| 8" J. Pine N67°W 57.6' | 9" J. Pine S74°W 5.1' | 6" J. Pine S80°W 16.35' |
| 8" J. Pine N43°W 83.35' | 9" J. Pine N57°W 9.3' | Fence Post N10°W 1.20' |



Signed by Paul R. Bressette Date 8-25-93
Surveyor's Michigan License No. 37270