

SURVEY & REMONUMENTATION

APR 28 1995

COMMISSION

LAND CORNER RECORDATION CERTIFICATE
Filing Requirement of Act 74, Mich. P.A. 1970

MARQUETTE COUNTY
MICHIGAN
RECEIVED FOR RECORD

1994 DEC 29 PM 1:55

Patricia R. Mackay
REGISTER OF DEEDS

RATIFIED BY PEER GROUP
P.A. 345 OF 1990

Long J. Bussone
DATE Sept 19, 1994

LIBER **1** PAGE **219**

Register of Deeds Stamp & File Number

For corners in	Located In:	Corner Code #
Marquette (County)	46N 25W	1-9
1. Public Land Survey	T _____ R _____	_____
	T _____ R _____	_____
	T _____ R _____	_____
	T _____ R _____	_____
2. Property Controlling in Section	S _____ T _____ R _____	_____
	S _____ T _____ R _____	_____
3. Miscellaneous Property in Sec.	S _____ T _____ R _____	_____
	S _____ T _____ R _____	_____

4. Lot No. _____, Recorded Plat _____
5. Private Claims _____

Michael Mileski, in a field survey on September 94, 19_____,
do hereby certify that under requirements of P.A. 74, Michigan P.A. of 1970, the corner points mentioned in lines 1 and 2 above were in conformance with regulations and rules therefore as required in the current manual of survey instructions of the United States Department of the Interior, Bureau of Land Management or by a decree of a Court of Law and/or that the corner points mentioned in lines 3, 4 and 5 above were in conformance with the rules of the Michigan Board of Land Surveyors or by a Decree of a Court of Law; established, re-established, monumented, re-monumented, recovered, found as expressed below:

NOTE: Not more than 4 corners, all in the same town and range, may be recorded on this certificate.

a. Description of original monument and accessories and/or subsequent restoration:
1-9; Southwest Corner Section 23;
See back of form.

b. Description of corner evidence found and/or method applied in restoring or reestablishing corner:
1-9; Southwest Corner Section 23;
See back of form.



State Plane Coordinates:
Grid System - NAD 83
Zone Number - 2111 Michigan North
Units - International Feet
Y = 575862.72326
X = 26143848.20184

c. Description of monument for corner and accessories established to perpetuate locating the position of the corner:
1-9; Southwest Corner Section 23;

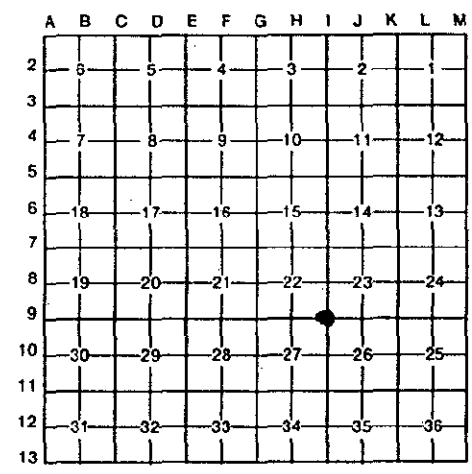
Set 2" I.D. x 30" aluminum pipe with 3" aluminum cap (Berntsen A1NB30) appropriately stamped as to location.

Set 60d spike	SE/side	7" Jack Pine	N36°E	193.96'
Set 60d spike	SW/side	5" Jack Pine	S34°E	212.22'
Set 60d spike	SE/side	6" Jack Pine	S41°W	241.58'
Set 60d spike	SW/side	7" Jack Pine	N43°W	260.18'
		Location Post	East	1.5'

All of the above bearing trees marked with upper and lower face blazes and scribed "NBT".

Surveyed by Michael Mileski Date 21 Nov 1994

Surveyor's Michigan License No. 39091



A. Description of original monument and accessories and/or subsequent restoration:

I-9; Southwest Corner Section 23;

Originally established during U.S. Survey conducted by Wm. Ives, D.S. for Douglass Houghton, D.S. in 1845 and monumented with a wood post witnessed by a Spruce Pine 7 S65°E 10 lks. and a Spruce Pine 7 N71°W 25 lks.

This corner was reestablished by the Marquette County Road Commission in the following manner:

On 13 December 1941 a traverse originating at Sta 42+42.0 of the road alignment traverse initiated on 1 December 1941 and described in M.C.R.C. field book 712 pages 1 - 5 was run westerly to the northwest corner of section 28 at which the M.C.R.C. recovered a "broken off jack pine post at least 50 or 60 years old" in agreement with U.S. stream calls to the north (U.S. = 181.5'; M.C.R.C. = 184.5') and west (U.S. = 264.0'; M.C.R.C. = 262.0'). Refer to M.C.R.C. field book 712 pages 7 & 8. The M.C.R.C. regarded the northwest corner of section 28 as a legitimate U.S. corner.

On 17 December 1941 the M.C.R.C. monumented the northeast corner of section 28 and the northeast corner of section 27 with a 1" iron pipe. Refer to M.C.R.C. field book 712 pages 10 & 11. By calculating through the traverse it is apparent that the M.C.R.C. initially intended that the northeast corner of section 28 and the northeast corner of section 27 be set at record U.S. distance at a bearing of S89° 38'E from the northwest corner of section 28. The M.C.R.C. bearing on the south township line is noted as S89° 27' E. From PC 0+00 of the road alignment traverse a check traverse was run to the northeast corner of section 27. The temporary corner was adjusted northeast 3.3' in order to bisect the error of closure. Refer to M.C.R.C. field book 712 page 11.

On 19 December 1941 the M.C.R.C. ran a traverse from a control point near the northeast corner of section 27 to the northeast corner of section 15 which is described as an "intersection of roads". Refer to M.C.R.C. field book 712 page 11. The field book entry immediately following these traverse notes states that "after calculating the bearing from the SE cor. of sec. 34 to the NE cor. of sec. 15 I find it necessary to change the location of the NE cor. of section 27 in order to correspond with errors in the U.S. government survey reset pipe and post S71° 19'E 35.1' from the location noted on preceding page". The northeast corner of section 28 was moved S71° 19'E 17.5 feet. Numerical analysis of these corner relocations indicate that the northeast corner of section 28 is on line between the northwest corner of section 28 and the northeast corner of section 27 at a distance proportional to the U.S. record. Refer to M.C.R.C. field book 712 page 12.

It is unclear from the M.C.R.C. field notes the reasoning used to determine the location of the northeast corner of section 27. The U.S. corners lying between the northeast corner of section 27 and the northeast corner of section 15 were set from the appropriate traverse point on 19 December 1941.

At least two of these corners were moved probably on 6 May 1942. Refer to M.C.R.C. field book 712 pages 12 & 13.

During the course of a survey conducted by the M.C.R.C. on 25 & 27 May 1942 a traverse was run from the southwest corner of section 35 to the northeast corner of section 27. All intermediate U.S. corners were considered lost and remonumented with 1" iron pipes intended to be on line between the southwest corner of section 35 and the northeast corner of section 27 at equally spaced intervals. Refer to M.C.R.C. field book 717.

An examination of the M.C.R.C. coordinate values for the U.S. corners reestablished between the southwest corner of section 35 and the southeast corner of section 15 indicates that a 00° 21' 40" deflection to the east exists at the northeast corner of section 27 and all intermediate U.S. corners were reestablished on the appropriate line at equal intervals. Refer to M.C.R.C. field book 712 pages 51 & 54 and field book 717.

The M.C.R.C. noted the following new bearing trees:
5" Jack Pine N45°W 54.9'
4" Jack Pine S64°W 71.0'

B. Description of corner evidence found and/or method applied in restoring or reestablishing corner.

I-9; Southwest Corner Section 23;

Found no evidence of M.C.R.C. monumentation or accessories. Corner was positioned in the following manner after a careful analysis of the U.S. field notes and the M.C.R.C. field notes, traverses, calculations, and intent.

Recovered M.C.R.C. 1" iron pipe monuments at the following corners: northwest corner section 23, west one-quarter corner section 23, west one-quarter corner section 26, and the southwest corner section 26.

The southwest corner of section 35 was set by myself proportionally along an arc connecting the southeast corner of section 36 and the south one-quarter corner of section 34. Careful consideration of the Marquette County Road Commission survey outlined in field book 717 and the existing geometry of the recovered M.C.R.C. monumentation along the west lines of sections 23, 26, and 35 leads me to believe that location of the southwest corner of section 23 can be best reestablished by doubling over the southwest corner of section 26 with the west one-quarter corner of section 26. The position of this corner as outlined above was ratified by unanimous decision at the Marquette County Peer Review Meeting on 19 September 1994.