

STATE OF MICHIGAN  
DEPARTMENT  
OF  
NATURAL RESOURCES

LAND CORNER RECORD

Marquette COUNTY

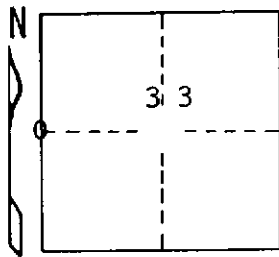
T 46 N R 26 W

DESCRIPTION OF CORNER 1/4 corner for section 32/33

CORNER MONUMENT 1" pipe with 4" aluminum cap

DATE MONUMENT PLACED AND WITNESSED November 13, 1970

WITNESSES TO CORNER..... 5" R. Maple, (1/4 S) (NBT) N 84° W, 35.7'



6" R. Maple, (1/4 S NBT) N 28° W, 45.3'

AND

CIRCLE CORNER REGISTERED

DESCRIPTION IN DETAIL AS TO HOW CORNER WAS LOCATED AND IDENTIFIED OR RESTORED.

This corner was set mid-point on line between section corners north and south. Corner lies on west end of small ledge--(Gov. Notes--Fir 8 for quarter section corner on west end of small ledge course east.) No evidence of original corner. No evidence of lines or occupation.

SURVEYOR'S SEAL

DISTRIBUTION:

SIGNED

Frank J. Bray  
REGISTERED LAND SURVEYOR  
Frank J. Bray

DATE 11/23/70

County Courthouse  
Area Forester (Regions I & II)  
District or Region Surveyor  
Forestry Div., Lansing

R 4047  
Rev. 10/68