

STATE OF MICHIGAN
DEPARTMENT
OF
NATURAL RESOURCES

LAND CORNER RECORD

Marquette COUNTY

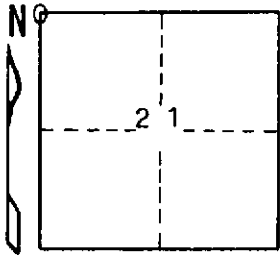
T 46 N R 26 W

DESCRIPTION OF CORNER Section corner for sections ^{17/16} 20/21

CORNER MONUMENT 1" pipe with 4" aluminum cap

DATE MONUMENT PLACED AND WITNESSED 11/6/70

WITNESSES TO CORNER..... 7" B. Spruce (S. 17) (NBT) N 68° W, 55.0'



5" Tamarack (S. 20) (NBT) S 39° W, 28.0'

AND

CIRCLE CORNER REGISTERED

DESCRIPTION IN DETAIL AS TO HOW CORNER WAS LOCATED AND IDENTIFIED OR RESTORED.

Set from probable line tree south (65.60 w. pine 18") and swamp edge west (3.00 leave swamp course N and S). Corner lies on westerly edge of power line.

SURVEYOR'S SEAL

DISTRIBUTION:

SIGNED

Frank J. Bray
REGISTERED LAND SURVEYOR
Frank J. Bray

DATE

11/23/70

County Courthouse
Area Forester (Regions I & II)
District or Region Surveyor
Forestry Div., Lansing

R 4047
Rev. 10/68