

MICHIGAN  
DEPARTMENT OF CONSERVATION  
FORESTRY DIVISION

# LAND CORNER RECORD

T. 45-46 N.R. 26 W.

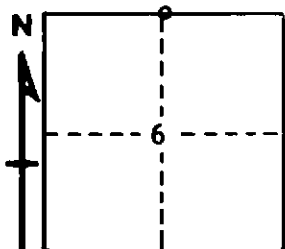
Marquette COUNTY

DESCRIPTION OF CORNER 1/4 Corner between Sections 6-31

CORNER MONUMENT 1" Pipe with 4" Aluminum Cap

DATE MONUMENT PLACED AND WITNESSED 10/15/62

WITNESSES TO CORNER..... 10" Jack Pine (1/4 S. N.B.T.) S. 41° W., 21 Lks.



9" Jack Pine (1/4 S. N.B.T.) S. 66° E., 23½ Lks.

AND

CIRCLE CORNER REGISTERED

DESCRIPTION IN DETAIL AS TO HOW CORNER WAS LOCATED AND IDENTIFIED OR RESTORED.

This corner replaced from one original W. Pine Bearing Tree.  
Bearing N. 70° W. 20 Links.  
Tree down. Found scribe marks '1/4" in excellent condition.

SURVEYOR'S SEAL

SIGNED Billy D. Buckler DATE 3/4/65  
REGISTERED LAND SURVEYOR