

STATE OF MICHIGAN
DEPARTMENT
OF
NATURAL RESOURCES

LAND CORNER RECORD

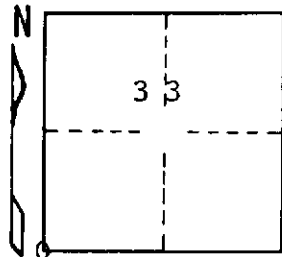
Marquette COUNTY
46
T 45 R 26 W

DESCRIPTION OF CORNER Section corners for sections $\frac{32}{33}$ T46N R26W
5/4 ~~7 1/4~~ R. 26 W

CORNER MONUMENT 1" pipe with 4" aluminum cap

DATE MONUMENT PLACED AND WITNESSED November 3, 1970

WITNESSES TO CORNER..... 27" W. Pine, (NBT) N 20° E, 115.0'



14" W. Pine, (S.5) (NBT) S 54° W, 28.5'

4" W. Pine, (S.32) (NBT) N 7° W, 20.7'

AND

CIRCLE CORNER REGISTERED

DESCRIPTION IN DETAIL AS TO HOW CORNER WAS LOCATED AND IDENTIFIED OR RESTORED.

This corner was placed mid-point on line between section corner one mile west and section corner one mile east. Corner position fits well with Escanaba River north and east.

SURVEYOR'S SEAL

DISTRIBUTION:

SIGNED Frank J. Bray DATE 11/20/70
REGISTERED LAND SURVEYOR
Frank J. Bray

County Courthouse
Area Forester (Regions I & II)
District or Region Surveyor
Forestry Div., Lansing

R 4047
Rev. 10/68