

**LAND CORNER RECORDATION CERTIFICATE**  
**Filing Requirement of Act 74, Mich. P.A. 1970**

For corners in  
**T Marquette**  
 County

	Located In:	Corner Code #/
1. Public Land Survey	T 46N R 26W	J9
	T R	K9
	T R	K10
	T R	
2. Property Controlling in Section	S23 T R	14
	S T R	
3. Miscellaneous Property in Sec	S T R	
	S T R	

Register of Deeds Stamp & File Number

4. Lot No ..... Recorded Plat .....  
 5. Private Claims .....

I, **Keith Sackett** in a field survey on **August 1**, 19 **90**, do hereby certify that under requirements of P.A. 74, Michigan P.A. of 1970, the corner points mentioned in lines 1 and 2 above were in conformance with regulations and rules therefore as required in the current manual of survey instructions of the United States Department of the Interior, Bureau of Land Management or by a decree of a Court of Law and/or that the corner points mentioned in lines 3, 4 and 5 above were in conformance with the rules of the Michigan Board of Land Surveyors or by a Decree of a Court of Law, established, re-established, monumented, re-monumented, recovered, found as expressed below

**NOTE: Not more than 4 corners, all in the same town and range, may be recorded on this certificate.**

A Description of original monument and accessories and/or subsequent restoration:

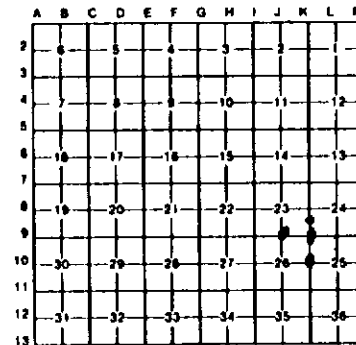
J9	K9	K10	14
Original monument and accessories not found.	Original monument and accessories not found.	Original monument and accessories not found.	Not set on original survey nor subsequently, apparently.

B Description of corner evidence found and/or method applied in restoring or reestablishing corner:

J9	K9	K10	14
Restored midway and on line.	Restored by double proportion.	Restored midway and on line.	Established midway and on line.

C Description of monument for corner and accessories established to perpetuate locating the position of the corner:

J9	K9	K10	14
Set 8-1-90 1" ID x 32" iron pipe v/4" aluminum cap. 22" W. Pine N82E 19.5' 1/4s NBT	Set 8-1-90 1" ID x 32" iron pipe v/4" aluminum cap. 5" Spruce N14E 6.7' s24 NBT 14" Balsam S26E 4.2" s25 NBT	Set 8-1-90 1" ID x 32" iron pipe v/4" aluminum cap. 6" Maple S26W 3.1' 1/4s NBT 6" Maple N82E 10.2' 1/4s NBT 12" W. Pine North 20.6' 1/4s NBT	Set 8-1-90 1" ID x 32" iron pipe v/plastic cap in south side of roadway. 20" W. Pine S79W 53.4' 1/16s BT 5" Spruce S10W 31.7' 1/16s BT 5" Maple N19E 52.0' 1/16s BT
22" W. Pine S17W 8.9' 1/4s NBT 4" Maple N30W 9.2' 1/4s NBT	24" W. Pine N48W 27.6' s23 NBT		



Signed by

*Keith Sackett*

Date

August 24, 1990

Surveyor's Michigan License No

19006