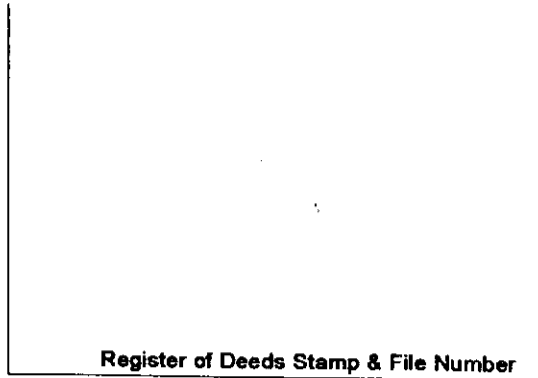


LAND CORNER RECORDATION CERTIFICATE
Filing Requirement of Act 74, Mich. P.A. 1970

For corners in

<u>Marquette</u> (County)	Located In:	Corner Code #
1. Public Land Survey	T <u>46N</u> R <u>29W</u>	<u>I9</u>
	T <u>46N</u> R <u>29W</u>	<u>I10</u>
	T _____ R _____	_____
	T _____ R _____	_____
2. Property Controlling in Section	S _____ T _____ R _____	_____
	S _____ T _____ R _____	_____
3. Miscellaneous Property in Sec.	S _____ T _____ R _____	_____
	S _____ T _____ R _____	_____

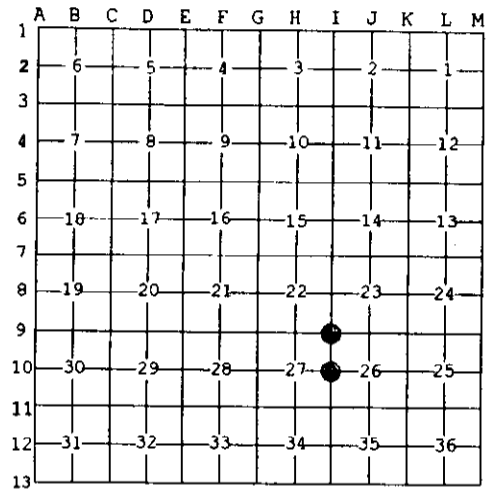


4. Lot No. _____, Recorded Plat _____
5. Private Claims _____

Aug 27 2003

I, Stephan J. Szyszkoski, in a field survey on _____, 20____ do hereby state that under requirements of P.A. 74, Michigan P.A. of 1970, the corner points mentioned in lines 1 and 2 above were in conformance with regulations and rules therefore as required in the current manual of survey instructions of the United States Department of the Interior, Bureau of Land Management or by a decree of a Court of Law and /or that the corner points mentioned in lines 3, 4 and 5 above were in conformance with the rules of the Michigan Board of Land Surveyors or by a Decree of a Court of Law; established, re-established, monumented, recovered, found as expressed below:

NOTE: Not more than 2 corners, all in the same town and range, may be recorded on this certificate.



A. Description of original monument and accessories and/or subsequent restoration:

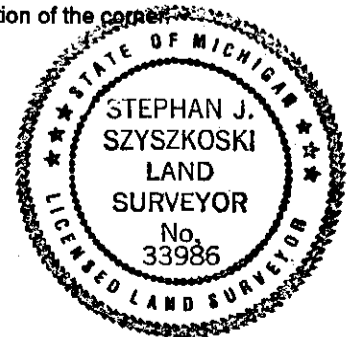
- (I9) Corner common to Sections 22-23-26-27. 1979: Restored by A.O.Enger, RLS. Set 1"IDx36" I.pipe with 3 3/4" alum. cap. J.Pine 14 N72W 25.0', J.Pine 7 N41-1/2E 80.6', R.Pine 4 S59E 81.7'
- (I10) Quarter corner common to Sections 26-27. 1979: Restored by proportionate measurement between Section corners by A.O.Enger RLS. Set 1"IDx36" I.pipe with 3 3/4" alum. cap. J.Pine 11 S40E 24.5', J.Pine 6 N49E 42.9'

B. Description of corner evidence found and/or method applied in restoring or reestablishing corner:

- (I9) Recovered the 1979 monument in good condition and at record bearing and distance from the 1979 witness trees. The J.Pine NW is now a dead stub. The other two are in good condition with overgrown blazes. Left the monument in place and made new witnesses as described below.
- (I10) Recovered the 1979 monument in good condition and at record bearing and distance from the 1979 witnesses, now both dead standing stubs. Found the position of the monument to be in reasonable accord with the record above, being 0.36' from the intended position. Accepted the monument as a careful and faithful reestablishment of the position of the original corner.

C. Description of monument for corner and accessories established to perpetuate locating the position of the corner:

- | | |
|---|--|
| (I9) Found 1"ID I.pipe with 4" alum. MDNR cap. Blazed, scribed, and set measuring nails in:
3" Maple S67E 13.5' "S26 N81"
4" Maple N51W 23.3' "S22 N81"
The existing witnesses:
14" J.Pine N45E 81.25' set meas. nail
11" R.Pine S55E 81.65' do
Bearings are magnetic. Distances are to nail with tag. Sq'd cedar post adjacent | (I10) Found 1"ID I.pipe with 4" alum. MDNR cap. Blazed, scribed, and set measuring nails in:
7" R.Pine N12W 31.4' "1/4S N81"
6" Spruce N40E 52.3' do
11" J.Pine S15E 17.0' do
4" Spruce S69W 19.4' do
Set sq'd spruce post adjacent. Bearings are magnetic. Distances are to nail with tag. |
|---|--|



Signed by Stephan J. Szyszkoski
Surveyor's Michigan License No. 33986

Date 9/3/03