

MICHIGAN  
DEPARTMENT OF CONSERVATION  
FORESTRY DIVISION

# LAND CORNER RECORD

T. 47 N.R. 22-23W

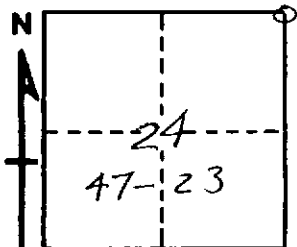
Marquette COUNTY

DESCRIPTION OF CORNER Sec. Cor. common to Secs. 18-19-13-24

CORNER MONUMENT 1" pipe with 4" aluminum cap

DATE MONUMENT PLACED AND WITNESSED 4-13-67

WITNESSES TO CORNER..... 10" Hemlock (S19 NBT) S58°E 17.5'



6" Soft Maple (S18 NBT) N42°E 38.8'

AND

CIRCLE CORNER REGISTERED

DESCRIPTION IN DETAIL AS TO HOW CORNER WAS LOCATED AND IDENTIFIED OR RESTORED.

Found 3/4" iron pipe, S30°E, 30'.

Corner lies in approx. intersection of roads north and west.

Found old, down cedar, with blazes facing corner.

SURVEYOR'S SEAL

*Billy D. Buckler*  
SIGNED Billy D. Buckler, R.L.S. DATE 9-20-68  
REGISTERED LAND SURVEYOR