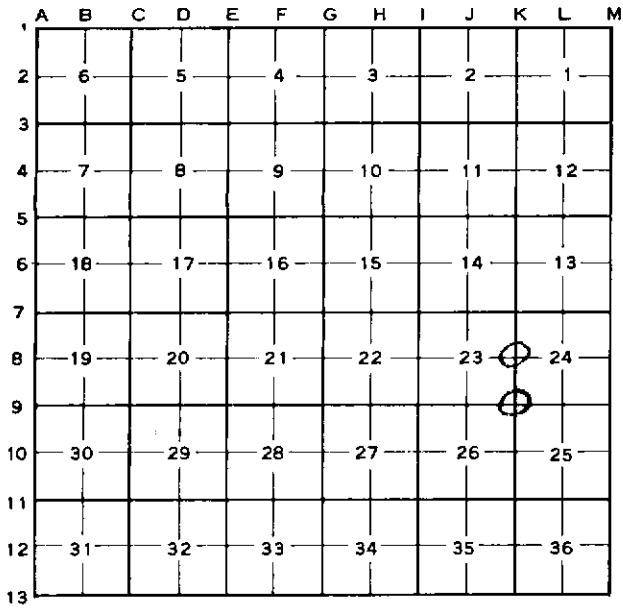


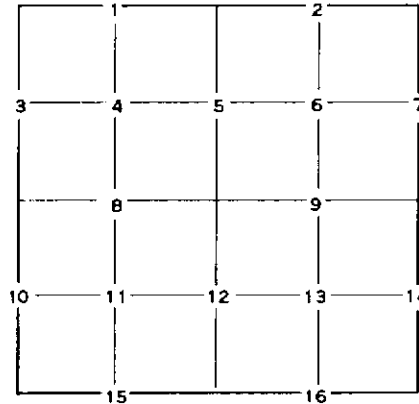
**CORNER NUMBERING CODE DIAGRAMS FOR IDENTIFYING LAND CORNER  
RECORDATIONS AND INDEXING**

FOR PUBLIC LAND SURVEY CORNERS IN THE  
T. 17N, R. 23W (MENTIONED OVER)



Apply letter prefix for corner points encircled above  
for identifying corner recordation numbers over.

FOR PROPERTY CONTROLLING AND MISC.  
PROPERTY CORNERS WITHIN THE SECTION  
(MENTIONED OVER AND EXCLUDE LOT CORNER)



1. Above coded numbers are positioned on 1/16 fractional lines of the section.
2. Township corner code numbers shall be applied to corners of above typical section not numbered.
3. Miscellaneous property corners within a section, located at points other than numbered above, shall be referenced to at least two of above corner code numbers.
4. Private claim corners to be tied to rectangular land corners if possible - sketch required below.

EXPLANATORY SKETCH IF NECESSARY -- BELOW