

LAND CORNER RECORDATION CERTIFICATE
Filing Requirement of Act 74, Mich. P.A. 1970

For corners in

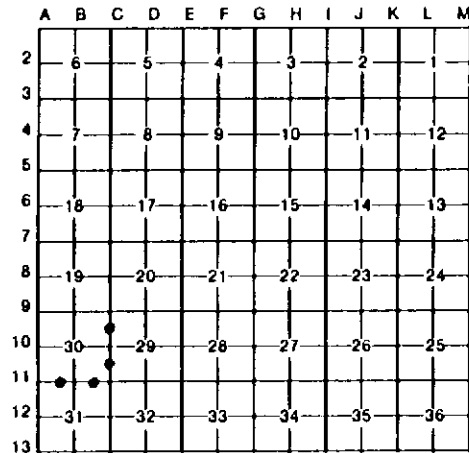
<u>Marquette</u> <small>(County)</small>	Located In:	Corner Code #
1. Public Land Survey	T R	
	T R	
	T R	
	T R	
2. Property Controlling in Section	S <u>30</u> T <u>47N</u> R <u>23W</u>	<u>7,14,15,16.</u>
3. Miscellaneous Property in Sec.	S T R	
	S T R	

Register of Deeds Stamp & File Number

4. Lot No. _____, Recorded Plat _____
 5. Private Claims _____

I, Paul Bressette, in a field survey on 6/2, 19 92, do hereby certify that under requirements of P.A. 74, Michigan P.A. of 1970, the corner points mentioned in lines 1 and 2 above were in conformance with regulations and rules therefore as required in the current manual of survey instructions of the United States Department of the Interior, Bureau of Land Management or by a decree of a Court of Law and/or that the corner points mentioned in lines 3, 4 and 5 above were in conformance with the rules of the Michigan Board of Land Surveyors or by a Decree of a Court of Law; established, re-established, monumented, re-monumented, recovered, found as expressed below:

NOTE: Not more than 4 corners, all in the same town and range, may be recorded on this certificate.



A. Description of original monument and accessories and/or subsequent restoration:

- 7. North 1/16th corner common to Sections 29 & 30. Not set in original survey, no evidence of subsequent establishment.
- 14. South 1/16th corner common to Sections 29 and 30. Not set in original survey, no evidence of subsequent establishment.
- 15. West 1/16th corner common to Sections 30 and 31. Not set in original survey, no evidence of subsequent establishment.
- 16. East 1/16th corner common to Sections 30 and 31. Not set in original survey, no evidence of subsequent establishment.

B. Description of corner evidence found and/or method applied in restoring or reestablishing corner:

- 7. Corner established mid-point and on-line between the northeast and east quarter corners of Section 30.
- 14. Corner established mid-point and on-line between the southeast and east quarter corners of Section 30.
- 15. Corner established by single proportion between the northwest and north quarter corners of Section 31. Corner falls on east edge of a clearcut and on west edge of swamp.
- 16. Corner established mid-point and on-line between the northeast and north quarter corners of Section 31.

C. Description of monument for corner and accessories established to perpetuate locating the position of the corner:

- | | | |
|---|--|---|
| 7. DNR Monument
6" sugar, N51E, 18.35' | 14. DNR Monument
8" hemlock, N39E, 30.75' | 15. DNR Monument
6" cedar, N77E, 35.5' |
| 8" r.maple, S49E, 24.55' | 15" y.birch, S32E, 8.95' | 5" r.maple, S60E, 14.5' |
| 10" hemlock, S25W, 27.9' | 7" r.maple, S28W, 9.05' | 5" r.maple, S46W, 13.65' |
| 5" sugar, N46W, 29.95' | 10" cedar, N45W, 29.5' | 5" r.maple, N8W, 34.3' |
16. DNR Monument
 8" y.birch, N33E, 17.25'
 6" bl.ash, S60E, 23.5'
 6" r.maple, S64W, 27.6'
 7" r.maple, N40W, 27.05'



Signed by Paul R. Bressette
 Surveyor's Michigan License No. 37270

Date 9-28-92