

1993

COMMISSION

LAND CORNER RECORDATION CERTIFICATE
Filing Requirement of Act 74, Mich. P.A. 1970

JOB NUMBER: 93300
SHEET NO. : 1-346

For corners in

MAQUETTE (County)	Located In:	Corner Code #
1. Public Land Survey	T 47N R 24W	A-1
	T 47N R 25W	M-1
	T R	
	T R	
	T R	
2. Property Controlling in Section	S T R	
	S T R	
3. Miscellaneous Property in Sec.	S T R	
	S T R	

MANQUETTE COUNTY
RECEIVED FOR RECORDATION
1993 DEC 29 AM 10:38
REGISTER OF DEEDS
LIBER 1 PAGE 42
Register of Deeds Stamp & File Number

- 4. Lot No. _____, Recorded Plat _____
- 5. Private Claims _____

A	B	C	D	E	F	G	H	I	J	K	L	M
2	6	5	4	3	2	1						
3												
4	7	8	9	10	11	12						
5												
6	18	17	16	15	14	13						
7												
8	19	20	21	22	23	24						
9												
10	30	29	28	27	26	25						
11												
12	31	32	33	34	35	36						
13												

I, GERALD W. CARLSON, in a field survey on Wednesday, December 15, 1993, do hereby certify that under requirements of P.A. 74, Michigan P.A. of 1970, the corner points mentioned in lines 1 and 2 above were in conformance with regulations and rules therefore as required in the current manual of survey instructions of the United States Department of the Interior, Bureau of Land Management or by a decree of a Court of Law and/or that the corner points mentioned in lines 3, 4 and 5 above were in conformance with the rules of the Michigan Board of Land Surveyors or by a Decree of a Court of Law; established, re-established, monumented, re-monumented, recovered, found as expressed below:

NOTE: Not more than 4 corners, all in the same town and range, may be recorded on this certificate.

A. Description of original monument and accessories and/or subsequent restoration:

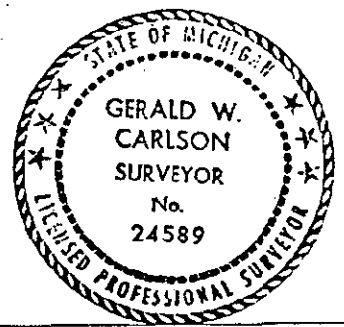
A-1: Section Corner common to Section 6, T47N-R24W; Section 1, T47N-R25W; Section 31, T48N-R24W; and Section 36, T48N-R25W. 1844: William A. Burt's original survey notes describe the corner monument as a wood post referenced by:
 8° Aspen N41W. 25 l
 10° Aspen S74E. 20 l
 1948 - MDOT highway right-of-way maps indicate the Township corner is in the lake but the highway right-of-way maps have tied the North line and the East line of Section 1, T47N-R25W to the centerline stationing of the highway at that time. No accessories for the corner were given.

B. Description of corner evidence found and/or method applied in restoring or reestablishing corner:

1993 - A subsequent recent survey by R. Cambensy, P.S. has retraced the old 1948 centerline of US-41 - M-28 from the current location of the highway and has come up with the position for the Township corner based on this 1948 MDOT survey. The proportioned distances along the old highway centerline fit well to the new highway centerline. A witness corner 125.00' South of the calculated Section corner was set on the Township line between Section 1 & 6 North of the present US-41 & M-28 highway between the railroad tracks and the bike path based on the R. Cambensy retracement. Peer group ratification 12-6-93.

C. Description of monument for corner and accessories established to perpetuate locating the position of the corner:

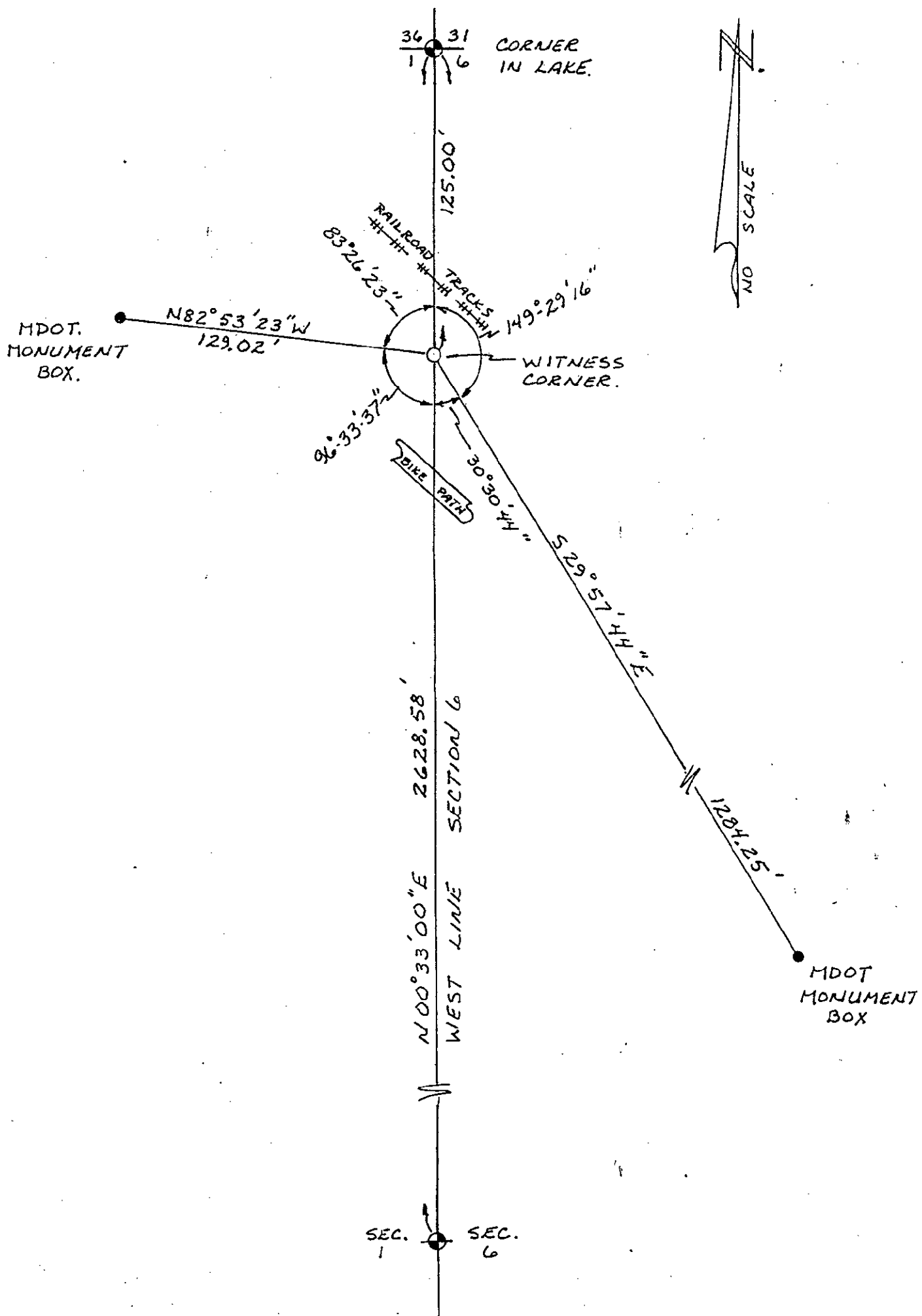
1993 - Set a 2 1/8" diameter aluminum pipe capped with a 3 1/4" diameter aluminum tablet Marquette County Survey Monument stamped to identify the corner referenced by nails in:
 Power Pole N52W 105.92 ft.
 Power Pole S49E 67.46 ft.
 Gas line marker (orange and white) S71E 51.06 ft.
 Green steel fence post N40E 0.47 ft.
 Monument Box N82 53' 23" W, 129.02' as surveyed by R. Cambensy.
 Monument Box S29 57' 44" E, 1284.25' as surveyed by R. Cambensy.
 (See back for sketch) Bk 4, Pg. 2



Signed by Gerald W. Carlson Date 12-23-93

Surveyor's Michigan License No. 24589

#9.00
#1.00



NO SCALE