

APR 01 1996  
COMMISSION

LAND CORNER RECORDATION CERTIFICATE  
Filing Requirement of Act 74, Mich. P.A. 1970

MARQUETTE COUNTY  
MICHIGAN  
RECEIVED FOR RECORD  
1995 DEC 27 AM 7:45  
REGISTER OF DEEDS

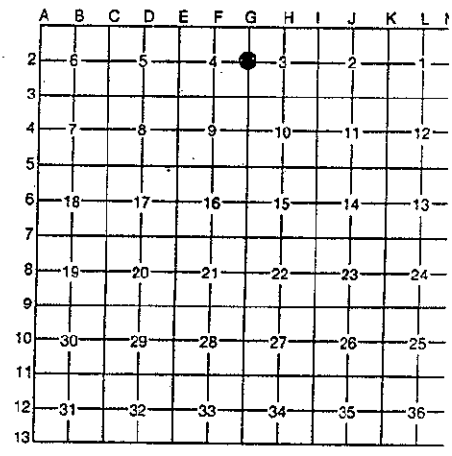
For corners in MARQUETTE (County)	Located In:	Corner Code #
1. Public Land Survey	47N T _____ R _____ 27W T _____ R _____ T _____ R _____ T _____ R _____	G-2 _____ _____ _____ _____
2. Property Controlling in Section	S _____ T _____ R _____ S _____ T _____ R _____	_____ _____
3. Miscellaneous Property in Section	S _____ T _____ R _____ S _____ T _____ R _____	_____ _____

LIBER 1 PAGE 249  
Register of Deeds Stamp & File Number

4. Lot No. \_\_\_\_\_, Recorded Plat \_\_\_\_\_  
5. Private Claims \_\_\_\_\_

GERALD W. CARLSON Wednesday, November 15 95

I, \_\_\_\_\_, in a field survey on \_\_\_\_\_, 19 \_\_\_\_\_, do hereby certify that under requirements of P.A. 74, Michigan P.A. of 1970, the corner points mentioned in lines 1 and 2 above were in conformance with regulations and rules therefore as required in the current manual of survey instructions of the United States Department of the Interior, Bureau of Land Management or by a decree of a Court of Law and/or that the corner points mentioned in lines 3, 4 and 5 above were in conformance with the rules of the Michigan Board of Professional Surveyors or by a Decree of a Court of Law; established, re-established, monumented, re-monumented, recovered, found as expressed below:



NOTE: Not more than 4 corners, all in the same town and range, may be recorded on this certificate.

A. Description of original monument and accessories and/or subsequent restoration:

G-2: Quarter Corner common to Sections 3 and 4. 1848: John No Date: The corner is indicated on an unidentified map Burt's original survey notes describe the corner monument as recorded in L. 126, MR Pg. 374.  
a Sugar post referenced by: The corner is shown on an unidentified map recorded in L. 115, MR Pg. 680.  
10" Ironwood S20W, 27 1  
16" Sugar N32E, 16 1  
No Date: The Corner is shown on an unidentified map recorded in L. 108, MR Pg. 735.  
1892: G.P. Cummings, in Record of Surveys Pg. 209, indicates the corner as having been previously established, and lying No Date: The corner is shown on an unidentified map recorded in L. 108, MR Pg. 736.  
2627.87' South of the NW Corner of Section 3, 2027.32' North of a Meander Corner, 1297.32' North from the W-S.W. 1/16 Corner, and 2606.14' North of the SW Corner of Section 3. 1987: A Certificate of Survey recorded by Larry J. Bussone RLS #25833, in L. 363, Deeds Pg. 782, (See Reverse Side)

B. Description of corner evidence found and/or method applied in restoring or reestablishing corner:

1995: Found and accepted a Cummings monument, 1' diameter cast tablet on a 2" pipe, 1'4" above ground. Distance North is 2628.57' and Distance South is 2607.35'

RATIFIED BY PEER GROUP  
P.A. 345 OF 1990

*Larry J. Bussone*  
DATE 11/13/95

C. Description of monument for corner and accessories established to perpetuate locating the position of the corner:

1995: Referenced found Cummings monument using found N.B.T.'s. Repainted existing face and butt blazes, and set duplex nails in:  
8" Maple S35E, 17.75' (Bussone N.B.T.)  
10" Maple S45W, 19.65' (Bussone N.B.T.)  
19" Maple S62W, 25.87' (Bussone N.B.T.)  
14" Trip. Oak N60E, 36.83' (Bussone N.B.T.)  
Green Steel Fence Post w/Survey Marker Sign South, 1.0'  
Note: Bearing Tree Tags were affixed to all N.B.T.'s.  
Bk. 11, PP. 69-70.



Signed by *Gerald W. Carlson*  
24589

Date 12-20-95

Surveyor's Michigan License No. \_\_\_\_\_

**Record No. 631:**

**Part A Continued:**

indicates the corner as a found mushroom iron lying S01-13-47E, 1320.29' from the North 1/16 Corner between Sections 3 and 4. No accessories given.

1988: A Certificate of Survey recorded by Larry J. Bussone RLS #25833, in L. 124, MR Pg. 513 indicates the same information as recorded above in L. 363, Deeds Pg. 782.

1988: An LCRC recorded by Larry J. Bussone RLS #25833, in L. 5, RC Pg. 146, indicates the corner as a found cast iron Mushroom Monument set by G.P. Cummings in March 1892, for Cliffs Iron Mining Co. Established references:

15" Maple	S60W,	25.20'
8" Maple	S41W,	19.50'
6" Maple	S43E,	17.00'
12" R. Oak	N61E,	35.6'

Note: All trees have an upper and lower notch.

1988: The corner is indicated on an Easement Sketch recorded by Alan K. Pierce LLS #30097, in L. 125, MR Pg. 61. No accessories given.

1990: A Certificate of Survey recorded by Gerald W. Carlson RLS #24589, in L. 392, Deeds Pg. 348 and L. 374, Deeds Pg. 740, indicates the corner as being S01-13-42E, 1320.14' from the North 1/16 Corner between Sections 3 and 4. Existing references:

15" Maple	S60W,	25.20'
8" Maple	S41W,	19.50'
6" Maple	S43E,	17.00'
12" R. Oak	N61E,	35.60'

1990: A Certificate of Survey recorded by Gerald W. Carlson RLS #24589, in L. 379, Deeds Pg. 07, indicates the same information as recorded by G. Carlson above in L. 392, Deeds Pg. 348 and L. 374, Deeds Pg. 740.

1991: A Certificate of Survey recorded by Gerald W. Carlson RLS #24589, in L. 001, SM Pg. 664, indicates the same information as recorded above by G. Carlson in L. 379, Deeds Pg. 07.

1991: A Lot Survey recorded by Larry J. Bussone RLS #25833, in L. 137, MR Pg. 560, indicates the corner as a found Mushroom Iron S88-51-30E, 1323.41' from the C-E 1/16 Corner of Section 4. No accessories given.

1992: The corner is indicated on a Description Sketch recorded by Alan K. Pierce LLS #30097, in L. 384, Deeds Pg. 445. No accessories given.

1993: The corner is shown on an Easement Sketch recorded by Alan K. Pierce LLS #30097, in L. 137, MR Pg. 876. No accessories given.

1993: The corner is shown on the Preliminary Plat of the Country Village Subdivision Surveyed by Glenn C. Van Neste RLS #27464, and recorded in L. 139, MR Pg. 759.

*Handwritten:*  
#  
See Book