

LAND CORNER RECORDATION CERTIFICATE
Filing Requirement of Act 74, Mich. P.A. 1970 as Amended

For corners in

<u>Marquette</u> (County)	Located In:	Corner Code #
1. Public Land Survey	<u>T48N R 28W</u>	<u>G7</u>
	T <u> </u> R <u> </u>	<u> </u>
	T <u> </u> R <u> </u>	<u> </u>
2. Property Controlling in Section	<u>S 16 T48N R 28W</u>	<u>F6</u>
	S <u> </u> T <u> </u> R <u> </u>	<u> </u>
	S <u> </u> T <u> </u> R <u> </u>	<u> </u>
3. Miscellaneous Property in Sec.	S <u> </u> T <u> </u> R <u> </u>	<u> </u>
4. Lot No. <u> </u> , Recorded Plat <u> </u>		
5. Private Claims		

Register of Deeds Stamp & File
Number

I, Stephan J. Szyszkoski, in a field survey on Sept. 6, 2007 do hereby state that under requirements of P.A. 74, Michigan P.A. of 1970, the corner points mentioned in lines 1 and 2 above were in conformance with regulations and rules therefore as required in the current manual of survey instructions of the United States Department of the Interior, Bureau of Land Management or by a decree of a Court of Law and /or that the corner points mentioned in lines 3, 4 and 5 above were in conformance with the rules of the Michigan Board of Land Surveyors or by a Decree of a Court of Law; established, re-established, monumented, recovered, found as expressed below:

NOTE: Not more than 2 corners, all in the same town and range, may be recorded on this certificate.

A. Description of original monument and accessories and/or subsequent restoration:

(G7) Corner common to Sections 15-16-21-22. 1848 - Established by Wells Burt, Deputy Surveyor. Set Sugar post. Y. Birch 14 S30W 9 links, Sugar 18 N41W 31 links.

(F6) Center of Section 16. Not established in the original survey. Found no subsequent record.

B. Description of corner evidence found and/or method applied in restoring or reestablishing corner:

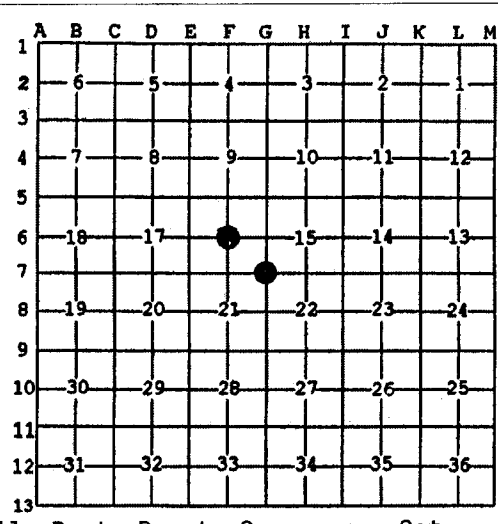
(G7) The original post and accessories were not recovered. Found no evidence of the position of the original corner on the ground. Reestablished the corner by double proportionate measurement to the original record between monumented corners 5246.04' North (80.00 chains GLO), 5294.68' West (80.22 chains GLO), 7935.46' East (120.23 chains GLO), and 5245.76' South (80.00 chains GLO).

(F6) Established the corner at the intersection of straight lines connecting opposite 1/4 corners.

C. Description of monument for corner and accessories established to perpetuate locating the position of the corner:

(G7) Set 1"IDx32" I.pipe with 4" alum. MDNR cap. Set a measuring nail with MDNR tag in the side of the following trees:
 17" Sugar N41E 17.0' mrkd "S15 NBT" *
 4" Sugar S84E 21.1' "S22 NBT"
 8" Sugar S01W 13.5' "S21 NBT"
 6" Sugar S55W 8.6' "S21 NBT"
 Set sq'd Sugar post adjacent. Bearings are magnetic. * found many old blazes on this tree.

(F6) Set 1"IDx32" I.pipe with 4" alum. MDNR cap. Set a measuring nail with MDNR tag in the side of the following trees:
 5" Sugar N07E 17.2' mrkd "C1/4 BT"
 6" Sugar S87E 5.6' do
 6" Sugar S05W 23.8' do
 4" Sugar N45W 8.3' do
 Set sq'd Spruce post adjacent. Bearings are magnetic.



Signed by Stephan J. Szyszkoski Date 10/11/07

Surveyor's Michigan License No. 33986

