

APR 01 1996
LAND CORNER RECORDATION CERTIFICATE
Filing Requirement of Act 74, Mich. P.A. 1970
COMMISSION

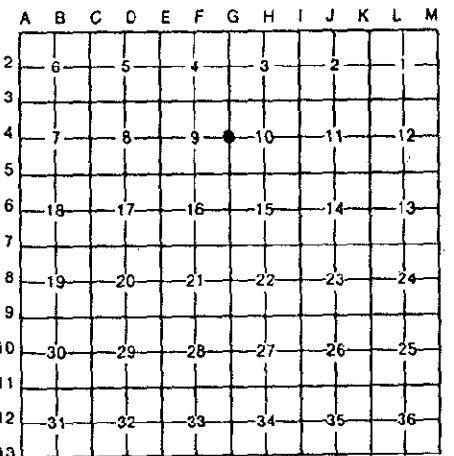
For corners in

MARQUETTE (County)	Located in:	Corner Code #
1. Public Land Survey	T 48N R 25W T _____ R _____ T _____ R _____ T _____ R _____	G-4 _____ _____ _____
2. Property Controlling in Section	S _____ T _____ R _____ S _____ T _____ R _____	_____ _____
3. Miscellaneous Property in Sec.	S _____ T _____ R _____ S _____ T _____ R _____	_____ _____

MARQUETTE COUNTY
RECEIVED FOR RECORD
1995 DEC 27 AM 7:47
Richard L. Henderson
REGISTERED PROFESSIONAL SURVEYOR

Register of Deeds Stamp & File Number **1 PAGE 270**

4. Lot No. _____, Recorded Plat _____
5. Private Claims _____



I, GERALD W. CARLSON, in a field survey on Tuesday, October 17, 1995, do hereby certify that under requirements of P.A. 74, Michigan P.A. of 1970, the corner points mentioned in lines 1 and 2 above were in conformance with regulations and rules therefore as required in the current manual of survey instructions of the United States Department of the Interior, Bureau of Land Management or by a decree of a Court of Law and/or that the corner points mentioned in lines 3, 4 and 5 above were in conformance with the rules of the Michigan Board of Land Surveyors or by a Decree of a Court of Law; established, re-established, monumented, re-monumented, recovered, found as expressed below:

NOTE: Not more than 4 corners, all in the same town and range, may be recorded on this certificate.

A. Description of original monument and accessories and/or subsequent restoration:

G-4: Quarter Corner common to Sections 9 and 10. 1846: William Ives' original survey notes describe the corner monument as a 12" Maple. No references.
1891: G.P. Cummings, County Surveyor, in Record of Surveys pp. 131 and 133, indicates the corner as a 12" Maple stump. No date: The corner is shown on U.P. Power Company easement maps recorded in L. 61, MR Pg. 482-1/2, and L. 65, MR Pages 23 -28.
No date: A survey map of unknown origin, recorded in L. 355, Pg. 587, indicates the corner as being N01-23-51E, 2671.12' from the S.E. Corner of Section 9.
1972: The corner is shown on a field map of the proposed Schneider Sawmill site recorded in L. 294, Pg. 452.
1977: An LCRC recorded by Gerald W. Carlson RLS #24589 in L. 1, RC Pg. 208, indicates the corner as a set 5/8" iron and cap at the intersection of a line from the S.W. Corner of Section 10 through an iron found 656.14' North of the S:W. Corner of Section 10, and a line from the East 1/4 Corner of Section 10 through the Center of Section 10.
Position corresponds to (See Reverse Side)

B. Description of corner evidence found and/or method applied in restoring or reestablishing corner:

1995: Found and accepted a 5/8" Iron with M.E.I. cap #18223 as described by G. Carlson in Part A above. Distance North is 2626.11', and Distance South is 2670.98'.

RATIFIED BY PEER GROUP
P.A. 345 OF 1990
Larry J. Bussone
DATE Oct. 16, 1995

Description of monument for corner and accessories established to perpetuate locating the position of the corner:

1995: Replaced 5/8" Iron with Cap #18223 with a 2 3/8" O.D. aluminum pipe capped with a 3 1/4" diameter aluminum tablet Marquette County Survey Monument stamped to identify the corner. Referenced by:

3.5" Tw. Maple	(Fd. d.h. nail)	N40W,	9.01'	Carlson NBT
10.5" W. Birch	(Set d.h. nail)	S82W,	10.49'	Carlson NBT
6.5" Maple Cluster	(Set d.h. nail)	S26W,	10.68'	Carlson NBT
13" Hemlock	(Set d.h. nail)	N71E,	29.85'	Carlson NBT
Green Steel Sign Post w/ Yellow Survey Marker Sign		S06E,	0.96'	

Note: Monument is 0.8' above ground. Bearing trees were repainted, butt blazes added, and B.T. Tags affixed.
Bk. 11, Pg. 11.

signed by Gerald W. Carlson Date 11-13-95
Surveyor's Michigan License No. 24589



Record No. 592:

Part A Continued:

distance called for in County Survey by George and Charles Cummings. Established references:

3" Tw. Maple	N42W,	9.02'
6" Clus. Maples	S27W,	10.68'
10" W. Birch	S82W,	10.47'
12" Hemlock	N73E,	29.98'

1987: A Certificate of Survey recorded by Robert F. Cambensy RLS #19616 in L. 001, SM Pg. 583, indicates the corner as a 5/8" iron rod with RLS cap #18223, referenced by:

3" Tw. Maple	N42W,	9.02'
10" W. Birch	S80W,	10.46'
6" Clus. Maples	S23W,	10.66'
12" Hemlock	N71E,	29.98'

*PK
Geo
S
P*