

MAY 22 1997

1996 DEC 20 PM 2:1

**COMMISSION**

**LAND CORNER RECORDATION CERTIFICATE**  
Filing Requirement of Act 74, Mich. P.A. 1970

*Patricia A. Mowbray*  
REGISTER OF DEEDS

For corners in MARQUETTE Located In: \_\_\_\_\_ Corner Code # \_\_\_\_\_  
(County)

1. Public Land Survey T 48N R 26W \_\_\_\_\_ D-9  
T \_\_\_\_\_ R \_\_\_\_\_  
T \_\_\_\_\_ R \_\_\_\_\_  
T \_\_\_\_\_ R \_\_\_\_\_

2. Property Controlling S \_\_\_\_\_ T \_\_\_\_\_ R \_\_\_\_\_  
in Section S \_\_\_\_\_ T \_\_\_\_\_ R \_\_\_\_\_

3. Miscellaneous S \_\_\_\_\_ T \_\_\_\_\_ R \_\_\_\_\_  
Property in Sec. S \_\_\_\_\_ T \_\_\_\_\_ R \_\_\_\_\_

4. Lot No. \_\_\_\_\_, Recorded Plat \_\_\_\_\_

5. Private Claims \_\_\_\_\_

LIBER 1 PAGE 34  
Register of Deeds Stamp & File Number

I, GERALD W. CARLSON, in a field survey on OCTOBER 17TH, 1996, do hereby state that under requirements of P.A. 74, Michigan P.A. of 1970, the corner points mentioned in lines 1 and 2 above were in conformance with regulations and rules therefore as required in the current manual of survey instructions of the United States Department of the Interior, Bureau of Land Management or by a decree of a Court of Law and/or that the corner points mentioned in lines 3, 4 and 5 above were in conformance with the rules of the Michigan Board of Land Surveyors or by a Decree of a Court of Law; established, re-established, monumented, recovered, found as expressed below:

NOTE: Not more than 2 corners, all in the same town and range, may be recorded on this certificate.

**A. Description of original monument and accessories and/or subsequent restoration:**  
D-9: Quarter Corner common to Sections 20 and 29.

1845: Sam U. Hill's original subdivision survey notes describe the corner monument as a wood post referenced by:

14" Fir N25W, 38 L 10" Fir S47E, 08 L

1902: Charles Cummings, in Record of Surveys Pg. 195, indicates the corner as being equidistant on line between the N.E. and N.W. Corners of Section 29. Distance East and West of 2613.5'. No accessories given.

1968: A field map of Section 29 from R.A. Brotherton's personal notes, as copied in 1968 by R.J. Brotherton, indicates distances East and West of the corner of 2613.5'. No accessories given. Date and source of survey not noted.

1979: An unidentified road plan recorded in L. 333, Deeds pp. 194 and 196, and in L. 331, Deeds Pg. 703, indicate the corner as a point of commencement. No accessories given.

1979: An LCRC recorded by Charles F. Clark P.S. #25836, in L. 1, RC Pg. 320, indicates that he set a 1/2" X 18" capped rebar by single proportion from C-9 and E-9. Referenced by P.K. Nails in:

10" Poplar N45E, 16.62' 6" Balsam S62E, 09.57'

P. Pole N80W, 36.71'

Note: Correction on corner information is found below in L. 1, RC Pg. 332 for corner C-9.  
(SEE REVERSE SIDE)

**B. Description of corner evidence found and/or method applied in restoring or reestablishing corner:**

D-9: 1996: No original evidence found. Found and accepted a 1/2" Iron with chipped cap reading "ECI-RLS 258- -", 0.4' above ground. Bearings and distances to found P.K. nails in existing references check very well with those recorded in 1979 by C.F. Clark P.S. #25836 Distance East is 2601.29' and Distance West is 2601.39'.

**C. Description of monument for corner and accessories established to perpetuate locating the position of the corner:**

D-9: 1996: Replaced found Iron and cap with a 2 3/8" O.D. aluminum pipe capped with a 3 1/4" diameter aluminum tablet Marquette County Survey Monument stamped to identify the corner. Monument is 0.3' above ground. Checked existing references:

10" Poplar N53E, 18.63' (Fd. P.K.) (Clark NBT) P.Pole N75W, 33.82' (Fd. P.K.) (Clark Accessory)

6" Balsam S68E, 12.28' (Set d.h. nail next to fd. overgrown P.K.) (Clark NBT)

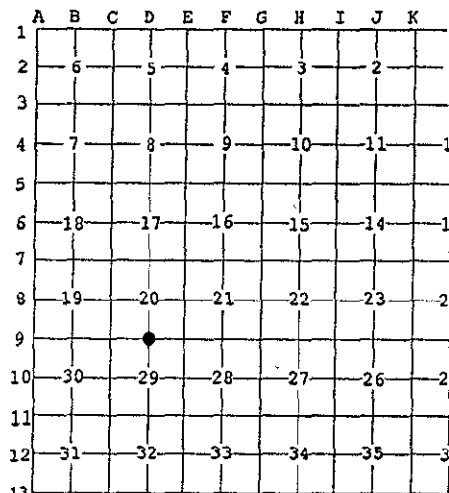
Established references using Fd. nails and GCVN washers in unrecorded witnesses:

6" Balsam N60E, 21.57' 8" W. Pine S78E, 19.02'

12" Balsam S10W, 35.06'

Green Steel Sign Post w/ Yellow Survey Marker Sign N06E, 01.98'

Note: Bearing trees have painted face, butt, and side nail blazes, and stamped B.T. Tags affixed.



RATIFIED BY PEER GROUP  
P.A. 345 OF 1990

*Larry J. Brunson*  
DATE 12/14/96



Signed by Gerald W. Carlson

Date 12-19-96

Surveyor's Michigan License No. 24589

B# 9798  
Geo Ram

RT A CONTINUED:

79: An LCRC recorded by Charles F. Clark P.S. #25836, in L. 1, RC Pg. 332, indicates that he set a 1/2" X 18" capped rebar by single proportion between E-9 and a corrected position for C-9. Remeasured existing references with P.K. Nails in:

Poplar	N50E,	18.65'	6" Balsam	S68E,	12.25'
Pole	N78W,	33.83'			

79: The corner is shown on a Survey Map recorded in L. 333, Deeds Pg. 226. Distance S00-58'-22"W, 1317.03' to the Center-North 1/16 Corner section 29. No accessories given.

80: The corner is shown on a road relocation map recorded in L. 102, MR Pg. 407. No accessories given.