

MAY 22 1997

COMMISSION

LAND CORNER RECORDATION CERTIFICATE
Filing Requirement of Act 74, Mich. P.A. 1970

MARQUETTE COUNTY MICHIGAN
RECEIVED FOR RECORD

1996 DEC 20 PM 2:1

Patricia A. Moberg
REGISTER OF DEEDS

For corners in MARQUETTE Located In: _____ Corner Code # _____
(County)

1. Public Land Survey T 48N R 26W _____ D-11
T _____ R _____
T _____ R _____
T _____ R _____

2. Property Controlling S _____ T _____ R _____
in Section S _____ T _____ R _____

3. Miscellaneous S _____ T _____ R _____
Property in Sec. S _____ T _____ R _____

LIBER 1 PAGE 34
Register of Deeds Stamp & File Number

4. Lot No. _____, Recorded Plat _____
5. Private Claims _____

I, GERALD W. CARLSON, in a field survey on OCTOBER 17TH, 19 96, do hereby state that under requirements of P.A. 74, Michigan P.A. of 1970, the corner points mentioned in lines 1 and 2 above were in conformance with regulations and rules therefore as required in the current manual of survey instructions of the United States Department of the Interior, Bureau of Land Management or by a decree of a Court of Law and/or that the corner points mentioned in lines 3, 4 and 5 above were in conformance with the rules of the Michigan Board of Land Surveyors or by a Decree of a Court of Law; established, re-established, monumented, recovered, found as expressed below:

NOTE: Not more than 2 corners, all in the same town and range, may be recorded on this certificate.

A. Description of original monument and accessories and/or subsequent restoration:
D-11: Quarter Corner common to Sections 29 and 32.

1845: Sam U. Hill's original subdivision survey notes describe the corner monument as a wood post referenced by:
10" Sugar N78W, 26 L 9" Sugar S30E, 22 L

1902: Charles Cummings, in Record of Surveys Pg. 195, indicates the corner. Distance West 1305.3 to the S.S.W. 1/16 Corner, and 2610.6' to the S.W. Corner of Section 29. Distance North 1317.0' to the Center-South 1/16 Corner, and 2634.0' to the Center 1/4 Corner of Section 29. No accessories given.

No Date: The corner is shown on a map recorded in L. 272, Deeds Pg. 178 as being East, 300.20' and South, 142.20' from the S.E. li of a 200' wide R/W for U.S. 41. No accessories given.

No Date: A highway map recorded in L. 212, Deeds Pg. 4, indicates the corner as being S89-31'-30"E, 532.71' from the C/L of U.S. 4

1968: A map of Section 29 copied from the personal notes of R.A. Brotherton in 1968 by R.J. Brotherton, indicates the corner. Distance North to the Center 1/4 Corner of Section 29 is 2634', and Distance West to S.W. Corner Section 29 is 2610.6'. Date and source of survey not noted. No accessories given.
(SEE REVERSE SIDE)

B. Description of corner evidence found and/or method applied in restoring or reestablishing corner:

D-11: 1996: No original evidence found. Found nothing at corner location. Reset corner using witness irons set by Glenn C. Van Neste P.S. #27464 in 1989 (L. 001, SM Pg. 638). Could not check nearby Line Call (West, 2.72 chains (179.5'), Enter Swamp Course N.E.) as land has been developed and natural features cannot be distinguished. Distance and bearing to set d.h. nail in found reference checks reasonably well with record by G. Carlson in 1981. Distance East is 2593.29' and Distance West is 2609.80'.

C. Description of monument for corner and accessories established to perpetuate locating the position of the corner:

D-11: 1996: Set a 2 3/8" O.D. aluminum pipe capped with a 3 1/4" diameter aluminum tablet Marquette County Survey Monument stamped to identify the corner. Monument is 0.2' below ground. Checked found reference using a set d.h. nail in:

18" W. Pine S60E, 44.26' (Carlson NBT)

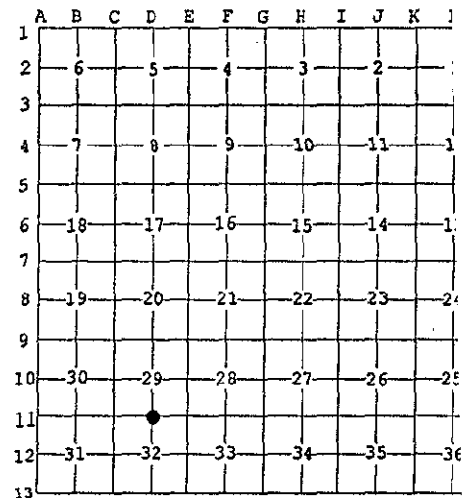
Established references:

7" W. Pine S22E, 40.29' 7" J. Pine N78E, 36.58'

S.E. Cor. Conc. Fueling Pad N82W, 37.66'

Green Steel Sign Post w/ Yellow Survey Marker Sign S06E, 1.55'

Note: Bearing trees have painted face, butt, and side nail blazes, d.h. measuring nails, and stamped B.T. Tags affixed.



RATIFIED BY PEER GROUP
P.A. 345 OF 1990

Larry J. Bussan
DATE 12/16/96



Signed by Gerald W. Carlson

Date 12-19-96

Surveyor's Michigan License No. 24589

JUL 03 2000

*R# 9798
Geo Rem
Geo Rem*

D-11:
PART A CONTINUED:

SECTION

1977: A Certificate of Survey recorded by Joseph O. Wasie P.S. #15415, in L. 334, Deeds Pg. 655, indicates the corner as a found 1" iron. Recorded Distance S89-16'E, 1298.3', and calculated Distance S89-05'-35"E, 1296.00 to the N.N.E. 1/16 Corner Section 32. Referenced by blazed:
18" W. Pine S60-20'E, 43.35' 4" J. Pine S36-40'W, 26.50'
4" J. Pine N68-20'W, 21.95'

1977: An LCRC recorded in 1978 by Joseph O. Wasie P.S. 15415, in L. 1, RC Pg. 261, indicates the corner as a found 1" iron rod. Referenced by blazed:
18" W. Pine S60-20'E, 43.35' 4" J. Pine S36-40'W, 26.50'
4" J. Pine N68-20'W, 21.95'

1979: The Plat of Carilli Subdivision, surveyed by Charles F. Clark P.S. #25836, and recorded in L. 12, Plats Pg. 227A, indicates the corner as being S01-05'-43"W, 351.00' from the North R.O.W. Line for U.S. 41/M-28 highway. No accessories or description of corner monument given.

1981: An LCRC recorded by Gerald W. Carlson P.S. #24589, in L. 4, RC Pg. 171, indicates the corner as a found 1 1/4" iron, +/- 20' West of woods road, and +/- 140' South of S. R/W U.S. 41 and M-28. Referenced by:
Gate Post East, 06.85' 6" J. Pine S33W, 26.70'
7" J. Pine N72W, 22.11' 18" W. Pine S62E, 44.10'

1982: The corner is indicated on an MDOT Right of Way Map in File # 52-R-1, Sheet 14.

1986: The Plat of Heritage Heights, surveyed by Robert F. Cambensy P.S. # 19616, and recorded in L. 12, Plats Pg. 300B, indicates the corner as being Due South, 361.77' from the North R.O.W. Line for U.S. 41/M-28 highway. No accessories or description of corner monument given.

1989: A Certificate of Survey by Robert F. Cambensy P.S. #19616 indicates the corner as a found 1 1/4" Iron Rod referenced by nails and disks in:
8" J. Pine S38W, 26.68' 9" J. Pine N65W, 22.10'
20" W. Pine S59E, 44.08'
No Liber or Page given.

1989: A Certificate of Survey recorded by Glenn C. Van Neste P.S. #27464, in L. 001, SM Pg. 638, indicates the corner as a found 1 1/4" iron bar. Distance S89-18'-48"E(M) [S89-16'E(R)], 2268.76'(M) to the S.E. Corner Section 29. Distance N01-00'-52"E(M) [N01-06'E(R)], 142.71'(M) [142.50'(R)] to a found 5/8" rerod with RLS cap #19616 @ the South R/W of U.S. 41. Note: Corner was removed during construction - Witness irons were set along a line 69.02' and 134.08' N.E.'LY from the corner. No other accessories given.

1994: The corner is indicated on four Certificates of Survey by Gerald W. Carlson P.S. #24589 as a found 1 1/4" Iron Bar referenced by:
8" J. Pine S38W, 26.68' 9" J. Pine N65W, 22.10'
20" W. Pine S59E, 44.08'
No Liber or Page given.