

MAY 22 1997

**COMMISSION**

**LAND CORNER RECORDATION CERTIFICATE**  
Filing Requirement of Act 74, Mich. P.A. 1970

MARQUETTE COUNTY  
MICHIGAN  
RECEIVED FOR RECORD

1996 DEC 20 PM 2: 12

*Patricia A. Monby*  
REGISTER OF DEEDS

For corners in MARQUETTE Located In: \_\_\_\_\_ Corner Code # \_\_\_\_\_  
(County)

1. Public Land Survey T 48N R 26W \_\_\_\_\_ E-9 \_\_\_\_\_  
T \_\_\_\_\_ R \_\_\_\_\_ \_\_\_\_\_  
T \_\_\_\_\_ R \_\_\_\_\_ \_\_\_\_\_  
T \_\_\_\_\_ R \_\_\_\_\_ \_\_\_\_\_

2. Property Controlling S \_\_\_\_\_ T \_\_\_\_\_ R \_\_\_\_\_  
in Section S \_\_\_\_\_ T \_\_\_\_\_ R \_\_\_\_\_  
3. Miscellaneous S \_\_\_\_\_ T \_\_\_\_\_ R \_\_\_\_\_  
Property in Sec. S \_\_\_\_\_ T \_\_\_\_\_ R \_\_\_\_\_

LIBER **1** PAGE **34**  
Register of Deeds Stamp & File Number

4. Lot No. \_\_\_\_\_, Recorded Plat \_\_\_\_\_  
5. Private Claims \_\_\_\_\_

I, GERALD W. CARLSON, in a field survey on OCTOBER 15TH, 19 96, do hereby state that under requirements of P.A. 74, Michigan P.A. of 1970, the corner points mentioned in lines 1 and 2 above were in conformance with regulations and rules therefore as required in the current manual of survey instructions of the United States Department of the Interior, Bureau of Land Management or by a decree of a Court of Law and/or that the corner points mentioned in lines 3, 4 and 5 above were in conformance with the rules of the Michigan Board of Land Surveyors or by a Decree of a Court of Law; established, re-established, monumented, recovered, found as expressed below:

NOTE: Not more than 2 corners, all in the same town and range, may be recorded on this certificate.

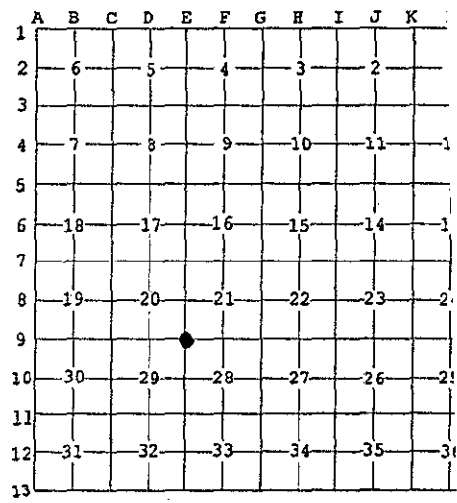
**A. Description of original monument and accessories and/or subsequent restoration:**

- E-9: Section Corner common to Sections 20, 21, 28, and 29.  
1845: Sam U. Hill's original subdivision survey notes describe the corner monument as a wood post referenced by:  
16" Spruce N41W, 32 L 18" Birch S37E, 20 L
- 1902: Charles Cummings, in Record of Surveys Pg. 195, indicates the corner. Distance West, 2613.5' to North 1/4 Corner (Set equidistant on line between corners), and 5227.0' to the N.W. Corner of Section 29. No accessories given.
- 1929: A field map by R.A. Brotherton for C.C.I. Co. indicates the corner as an iron. No accessories given.
- No Date: The corner is shown on a property description map recorded in L. 226, Deeds Pg. 138.
- No Date: The corner is shown on a sketch for U.P. Power Company recorded in L. 227, Deeds Pg. 40. No accessories given.
- No Date: MCRC F.B. #747 (No page given) indicates the corner as part of a traverse between the N.W. Corner and West 1/4 Corner of Section 28 in which the W.N.W. 1/16 Corner of Section 28 was set. No monument description or accessories given. (SEE REVERSE SIDE)

**B. Description of corner evidence found and/or method applied in restoring or reestablishing corner:**  
E-9: 1996: No original evidence found. Found and accepted a 1/2" diameter Boat Spike flush with asphalt surface, 7.6' West of East E/M Cedar Lane, and 28.6' North of N. E/M Airport Cir. JB Rd. Checked Line Call: North, 5.00 chains (330'), Enter Swamp Course S.W. Measured Call: Measured 330' North along road and found no recognizable enter swamp call. Check Line Call: North, 6.85 chains (452' Stream 3 L Course S.W.. Measured Call: North, 665' along road to a culvert - no stream observed. Check Line Call: West, 4.36 chains (287.76'), Stream 4 L Course South. Measured Call: West, 250', entered swamp. No stream recognized. Distance East is 2656.13', Distance West is 2601.29', and Distance South is 2536.67'.

**C. Description of monument for corner and accessories established to perpetuate locating the position of the corner:**

E-9: 1996: Replaced found boat spike with a 3/4" X 48" rerod capped with a 3 1/4" diameter aluminum tablet Marquette County Survey Monument stamped to identify the corner. Monument is 0.25' below road surface in a set aluminum monument box. Referenced by:  
7" W. Birch S75W, 31.07' 8" R. Pine N65E, 28.61'  
10" J. Pine N30E, 64.94' S.E. Cor. Found. Hse. #101 N56W, 78.87'  
South, 70.90'  
Green Steel Sign Post w/ Yellow Survey Marker Sign  
Note: Distances are to set d.h. nails, 1.0' +/- above ground on trees.  
No blazes, paint, or B.T. tags used due to residential location.



**RATIFIED BY PEER GROUP**  
**P.A. 345 OF 1990**  
*Larry Bussome*  
DATE 12/14/96

Signed by Gerald W. Carlson Date 12-19-96



**E-9:**  
**PART A CONTINUED:**

*R# 9798  
Geo  
See Rem*

No Date: MCRC field notes (No F.B. # given) indicate the corner as a 2" iron pin at fence corner. No accessories given.

1910: A map by R.A. Brotherton of Section 28 shows the corner as having been previously set. No accessories given.

1910: A Map of Section 28 by R.A. Brotherton indicates the corner as being 2535' North of the West 1/4 Corner, and 1267.5' North of the W.N.W. 1/16 Corner of Section 28. No accessories given.

1942: MCRC F.B. #701 (No page # given) indicates a road intersection near the corner. No accessories given.

1959: A property description map recorded in L. 281, Deeds Pg. 533, and L. 233, Deeds Pg. 566, indicates the corner as being at the C/L - C/L of Co. Rd. JB and an unidentified East-West Co. Rd. No accessories given.

1968: Field maps of Sections 28 and 29 from R.A. Brotherton's personal notes, as copied in 1968 by R.J. Brotherton, indicate the corner as an iron set from BT. Distance East to an iron with Pine BT at North 1/4 Corner of Section 28 is 2674.0'. Distance South to an iron set from BT at the West 1/4 Corner Section 28 is 2535.0'. Distance West to North 1/4 Corner of Section 29 is 2613.5', and to N.W. Corner Section 29 is 5227.0'. No accessories given.

1979: An LCRC recorded by Charles F. Clark P.S. #25836, in L. 1, RC Pg. 320, indicates the corner as a found boat spike in Co. Rd. JP - assumed to be a restoration of corner noted as an iron pin in MCRC F.B. #654. Found boat spike referenced by:

Stop Sign Post	S58W, 22.42'
P.K. Nails in:	
P. Pole	N45W, 41.03'
8" J. Pine	N20E, 65.06'

JUL 03 2000

SECTION