

MAY 22 1997

COMMISSION

LAND CORNER RECORDATION CERTIFICATE
Filing Requirement of Act 74, Mich. P.A. 1970

MARQUETTE COUNTY MICHIGAN
RECEIVED FOR RECORD

1996 DEC 20 PM 2: 12

Patricia A. Moseley
REGISTER OF DEEDS 2

For corners in MARQUETTE (County) Located in: _____ Corner Code # _____

1. Public Land Survey T 48N R 26W _____ F-11
 T _____ R _____
 T _____ R _____
 T _____ R _____

2. Property Controlling in Section S _____ T _____ R _____
 S _____ T _____ R _____

3. Miscellaneous Property in Sec. S _____ T _____ R _____
 S _____ T _____ R _____

4. Lot No. _____, Recorded Plat _____

5. Private Claims _____

LIBER 1 PAGE 35
Register of Deeds Stamp & File Number

I, GERALD W. CARLSON, in a field survey on OCTOBER 9TH, 1996, do hereby state that under requirements of P.A. 74, Michigan P.A. of 1970, the corner points mentioned in lines 1 and 2 above were in conformance with regulations and rules therefore as required in the current manual of survey instructions of the United States Department of the Interior, Bureau of Land Management or by a decree of a Court of Law and/or that the corner points mentioned in lines 3, 4 and 5 above were in conformance with the rules of the Michigan Board of Land Surveyors or by a Decree of a Court of Law; established, re-established, monumented, recovered, found as expressed below:

NOTE: Not more than 2 corners, all in the same town and range, may be recorded on this certificate.

A. Description of original monument and accessories and/or subsequent restoration:
F-11: Quarter Corner common to Sections 28 and 33.

1845: Sam U. Hill's original subdivision survey notes describe the corner monument as a wood post referenced by:
13" Cedar S15E, 17 L 12" Maple N38W, 28 L

No Date: A Field Map of Section 33 by R.A. Brotherton for C.C.I. Co. indicates the corner. Distance East, 2652.32' to the N.E. Corner of Section 33; Distance South of 2619.50' to the Center 1/4 Corner of Section 33. No accessories given.

No Date: A sketch of Section 33 by R.A. Brotherton for C.C.I. Co. indicates the corner. Distance East, 2652.32' to the N.E. Corner of Section 33; Distance West, 2758.0' to the N.W. Corner of Section 33; and Distance South, 2619.5' to the Center 1/4 Corner of Section 33. No accessories given.

1910: A sketch of Section 28 by R.A. Brotherton for C.C.I. Co. indicates the corner as having been previously set. Distances East and West consistent with those shown above. Distance North, 2635.8' to the Center 1/4 Corner of Section 28. Note: There is a question mark next to distance shown to the West. No accessories given.
(SEE REVERSE SIDE)

B. Description of corner evidence found and/or method applied in restoring or reestablishing corner:

F-11: 1996: No original evidence found. Found and accepted a 5/8" I.D. Pipe with white paint, 1.5' high, near the top of a hillside sloping S.E.. Checked Line Call: East, 7.78 chains (513.5'), Summit of Ridge of Rock Course N.E.. Measured Call: East, 520' to Rock Ridge at Summit. Checked Line Call: West, 6.22 chains (410.52'), Slate Rock. Measured Call: West, 470' to Slate Rock. Checked Line Call: West, 9.19 chains (606.5'), River 60 L (39.6') Course S.E.. Measured Call: West, 568', to East Edge of River (stagnant and +/- 60' wide). Distances and bearings to set d.h. nails in found references check well with those recorded by G. Carlson in 1980 and William Donnan in 1979. Distance East is 2649.73' and Distance West is 2775.74'.

C. Description of monument for corner and accessories established to perpetuate locating the position of the corner:

F-11: 1996: Replaced found pipe with a 2 3/8" O.D. aluminum pipe capped with a 3 1/4" diameter aluminum tablet Marquette County Survey Monument stamped to identify the corner. Monument is 0.5' above ground. Checked bearings and distances to set d.h. nails in found references:

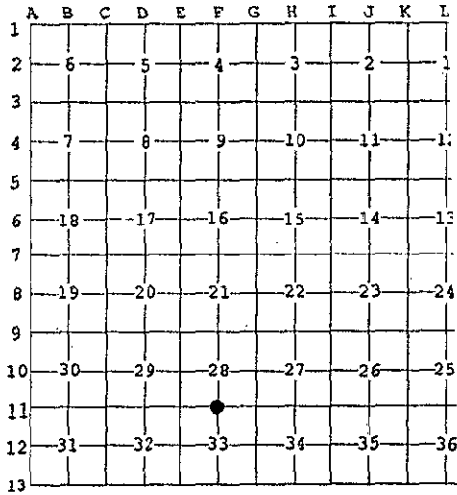
10" Oak S37W, 9.29' (Carlson NBT) 10" W. Birch N84W, 13.51' (Donnan NBT)

Established references:

5" Spruce N34W, 16.65' 5" Balsam N22E, 12.74'

Green Steel Sign Post w/ Yellow Survey Marker Sign South, 2.03'

Note: Bearing trees have painted face, butt, and side nail blazes, d.h. measuring nails, and stamped B.T. Tags affixed. Bk. 10, pp. 105-106.



RATIFIED BY PEER GROUP

P.A. 345 OF 1990

Larry J. Busson

DATE 12/16/96



Signed by Gerald W. Carlson

Date 12-19-96

Surveyor's Michigan License No. 24589

JUL 03 2000

Plat 9798
Geo Ref

F-11:

PART A CONTINUED:

SECTION

1968: A sketch of Section 28 from the personal notes of R.A. Brotherton, as copied in 1968 by R.J. Brotherton, indicate the corner as a Pipe previously set from BT. Distances East, West, and North are consistent with those shown above by Brotherton in 1910. No accessories given.

1979: An LCRC recorded in 1980 by William R. Donnan P.S. #17618, in L. 4, RC Pg. 3, indicates the corner as a found 5/8" Iron Pipe. Referenced by:
4" W. Birch N19E, 03.43' 4" Maple S33W, 09.19'
10" W. Birch Due West, 13.55'

1980: An LCRC recorded by Gerald W. Carlson P.S. #24589, in L. 1, RC Pg. 412, indicates the corner as a found 3/4" Pipe, painted white on hillside, +/- 50' South of clearing. Referenced by:
6" Oak S35W, 09.20' 5" Cherry S83W, 05.77'
4" W. Birch N28W, 12.07' 4" W. Birch N15E, 03.50'

1980: A Certificate of Survey recorded by Gerald W. Carlson P.S. #24589, in L. 335, Deeds Pg. 299, indicates the corner and accessories as described above by G. Carlson in L. 1, RC Pg. 412. Distance N89-18'-41"E, 1322.17' to a found Railroad Rail at the East 1/16 Corner common to Sections 28 and 33.