

MAY 22 1997

COMMISSION

LAND CORNER RECORDATION CERTIFICATE
Filing Requirement of Act 74, Mich. P.A. 1970

MARQUETTE COUNTY MICHIGAN RECEIVED FOR RECORD

1996 DEC 20 PM 2:12

Patricia L. Morley REGISTER OF DEEDS

For corners in MARQUETTE (County) Located In: Corner Code #

- 1. Public Land Survey T 48N R 26W G-10
2. Property Controlling in Section S T R
3. Miscellaneous Property in Sec. S T R

4. Lot No. , Recorded Plat
5. Private Claims

LIBER 1 PAGE 355 Register of Deeds Stamp & File Number

I, GERALD W. CARLSON, in a field survey on OCTOBER 14TH, 1996, do hereby state that under requirements of P.A. 74, Michigan P.A. of 1970, the corner points mentioned in lines 1 and 2 above were in conformance with regulations and rules therefore as required in the current manual of survey instructions of the United States Department of the Interior, Bureau of Land Management or by a decree of a Court of Law and/or that the corner points mentioned in lines 3, 4 and 5 above were in conformance with the rules of the Michigan Board of Land Surveyors or by a Decree of a Court of Law; established, re-established, monumented, recovered, found as expressed below:

NOTE: Not more than 2 corners, all in the same town and range, may be recorded on this certificate.

A. Description of original monument and accessories and/or subsequent restoration: G-10: Quarter Corner common to Sections 27 and 28, 1845: Sam U. Hill's original subdivision survey notes describe the corner monument as a wood post referenced by: 15" Y. Birch S23W, 11 L 8" Maple N65E, 26 L

No Date: A property description map recorded in L. 261, Deeds Pg. 348, indicates the corner at a road intersection. No accessories given.

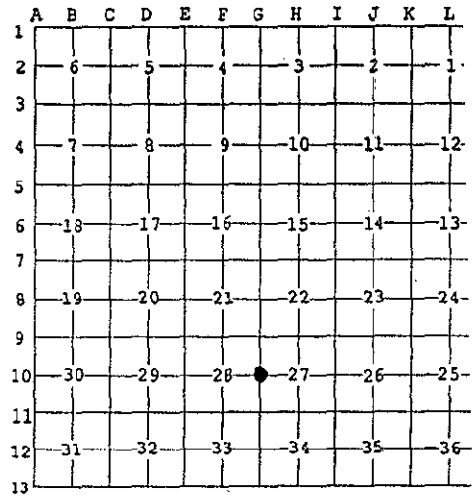
No Date: A field map of Section 27 by R.A. Brotherton for C.C.I. Co. indicates the corner as an Iron. Distance North, 2632.50' to an Iron at the N.W. Corner of Section 27. Distance South, 2632.50' to an Iron at the S.W. Corner of Section 27. Distance East, 2634' to an Iron at the Center 1/4 Corner Section 27. No accessories given.

No Date: A property Description Map recorded in L. 362, Deeds Pg. 162 indicates the corner at the intersection of U.S. 41 and a County Road. No accessories given.

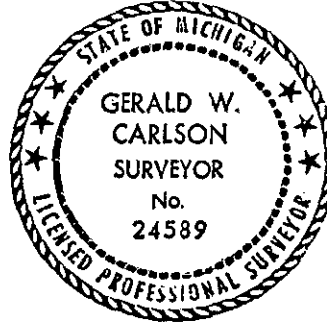
No Date: An MDOT highway map (Source unknown) indicates the corner as S00-46'-14"E, 728.92' from the C/L of the new U.S. 41/M-28. No accessories given. (SEE REVERSE SIDE)

B. Description of corner evidence found and/or method applied in restoring or reestablishing corner: G-10: 1996: No original evidence found. Found and accepted a 3/4" diameter Iron, 0.25' below asphalt surface, at C/L N-S Co. Rd. JQ and 38.2' South of C/L E-W Co Rd. JB. Checked Line Call: South, 10.00 chains (660'), Summit of ridge N.E.. Measured Call: South, 1737.6' to the nearest discernable summit of ridge - call fits poorly. Distance North is 2632.60' and Distance South is 2631.91'.

C. Description of monument for corner and accessories established to perpetuate locating the position of the corner: G-10: 1996: Capped found 3/4" Iron with a 3 1/4" diameter aluminum tablet Marquette County Survey Monument stamped to identify the corner. Top of monument is 0.2' below surface in a set aluminum monument box. Referenced by: 22" R. Pine (To fd. nail in GCVN washer) N36W, 90.16' 16" Cherry N35E, 116.25' 12" W. Spruce S38W, 65.38' 14" W. Pine N89E, 72.57' Set Green Steel Sign Post w/ Yellow Survey Marker Sign North, 66.52' Note: Bearing trees have painted face, butt, and side nail blazes, d.h. measuring nails, and stamped B.T. Tags affixed. Distance to 22" R. Pine is to a fd. nail in washer (Van Neste Surveying").



RATIFIED BY PEER GROUP P.A. 395 OF 1990 Larry J. Bussone DATE 12/16/96



Signed by Gerald W. Carlson Date 12-19-96 Surveyor's Michigan License No. 24589

JUL 03 2000

G-10:

PART A CONTINUED:

SECTION

*Q# 9798
Geo Ram*

No Date: An unidentified map shows the corner at the intersection of roads. Distance East, 2634' to the Center 1/4 Corner Section 27, and Distance South, 2632.5' to the S.W. Corner Section 27. No accessories given.

No Date: The corner is shown on maps recorded in L. 236, Deeds Pg. 93; and L. 180, Deeds Pg. 206. A map recorded in L. 208, Deeds Pg. 329 indicates an Iron 33' East of the corner at the apparent intersection of the East R/W for Co. Rd. J.Q. and the South R/W for Old U.S. 41. No accessories given.

1910: Field Maps of Section 28 by R.A. Brotherton indicate the corner as a set Iron. Distances North and South to Irons at the N.E. and S.E. Corners of Section 28 of 2632.5'. Distance West, 2645.2' to a set Iron at the Center 1/4 Corner of Section 28. No accessories given.

1933: MCRC field notes by Heilala in F.B. #116 indicate the corner as an Iron Rail. No accessories given.

1934: MCRC field notes by Heilala from F.B. #116 indicate the corner as a Steel Rail. Distance to N.E. Corner Section 28 calculated to be 2635.5'. No accessories given.

1959: A map recorded by R.J. Brotherton in L. 284, Deeds Pg. 462 indicates the corner. Distance North to the E.N.E. 1/16 Corner Section 28 is 1316.8'. No accessories given.

1968: A field map from R.A. Brotherton's personal notes, as copied in 1968 by R.J. Brotherton, indicate the corner as an Iron. Distances are the same as those from Brotherton (1910) listed above. No accessories given.

1968: A Survey Map recorded by Robert D. Washburn P.S. #6844, in L. 274, Deeds Pg. 129, indicates the corner as a found Iron Pin at the C/L of Co. Rd. J.Q.. No accessories given.

1974: A Certificate of Survey recorded by William R. Donnan P.S. #17618, in L. 1, SM Pg. 95, indicates the corner as a found 1" Iron. Distance S89-49'-31"E, 2629.27' to a found Axle Shaft at the Center 1/4 Corner Section 27. Found 1" Iron referenced by:

P. Pole S45W, 40.42'	P. Pole S55E, 38.94'
P. Pole N68E, 53.74'	

1978: An LCRC recorded by David B. Guthrie P.S. #22435, in L. 1, RC pp. 216-217, indicates the corner as an Existing 3/4" Iron Bar referenced by:

P. Pole S45W, 40.35'	P. Pole East, 50.10'
P. Pole North, 68.26'	

1978: A Survey Map recorded by David B. Guthrie P.S. #22435, in L. 1, SM Pg. 218, indicates the corner as an Existing 3/4" Iron Bar. Distance South, 2632.9' to an Existing 3/4" Iron Bar at the S.E. Corner Section 28. Referenced by:

P. Pole S45W, 40.35'	P. Pole East, 50.10'
P. Pole North, 68.26'	

1980: The corner is shown on a Right of Way Map from the MDOT, File #52-R-1, Sheet 15. No accessories given.

1981: Certificates of Survey recorded by Charles F. Clark P.S. #25836, in L. 001, SM Pg. 467; L. 001, SM Pg. 469; and L. 001, SM Pg. 471, indicate the corner as a found 3/4" Iron Pin 0.5' below Bit. pavement. Distance Due East, 39.83'(C) to the S'LY R/W Co. Rd. JB (Old U.S. 41). No accessories given.

1983: A Certificate of Survey by Robert F. Cambensy P.S. #19616, indicates the corner as an Iron Bar at the approximate C/L of North-South road. Distance S89-24'-34"E, 2629.01' to a found 1" solid iron axle at the Center Quarter Corner of Section 27. Distance Due South, 2631.84' to a found 3/4" iron bar at the S.W. Corner of Section 27. Referenced by:

P.K. Nail in P. Pole Due North, 68.24'	P.K. Nail in P. Pole N71E, 50.05'
Nail & Disk in P. Pole S50W, 42.48'	

1988: An Easement Map recorded by Traverse Engineering in L. 125, MR Pg. 38, indicates the corner as a found iron. Distance Az. = 177-13'-56", 2631.67' to the S.E. Corner Section 28. No accessories given.

1991: A Certificate of Survey by William L. Karr P.S. #27450 (Per G.C.V.N. P.S.#27464), indicates the corner as a found 3/4" Oblong Iron, 4" below asphalt surface at the intersection of Forge and Forrest Drives. Distance N00-58'-09"W, 2632.56' to the N.W. Corner Section 27. No Liber and Page given. No accessories given.

1993: A Certificate of Survey recorded by Glenn C. Van Neste P.S. #27464, in L. 2, SM Pg. 126, indicates the corner as a found 3/4" Iron. Distance N00-32'-51"W, 1316.39'(M) to the W.N.W. 1/16 Corner Section 27. Distance East, 1314.77'(M) to a found 1 1/2" Iron Pipe at the Center-West 1/16 Corner Section 27. No accessories given.