

**LAND CORNER RECORDATION CERTIFICATE**  
**Filing Requirement of Act 74, Mich. P.A. 1970**

MARQUETTE COUNTY  
 MICHIGAN  
 RECEIVED FOR RECORD

1999 NOV 18 PM 2:05

For corners in SECTION

<u>MARQUETTE</u> (County)	Located In: Ishpeming Township	Corner Code #
1. Public Land Survey	T <u>48N</u> R <u>27W</u>	<u>E-03</u>
	T _____ R _____	_____
	T _____ R _____	_____
	T _____ R _____	_____
2. Property Controlling in Section	S _____ T _____ R _____	_____
	S _____ T _____ R _____	_____
3. Miscellaneous Property in Sec.	S _____ T _____ R _____	_____
	S _____ T _____ R _____	_____

*Patricia A. Mowbray*  
 REGISTER OF DEEDS

LIBER: **R 2** PAGE **168**

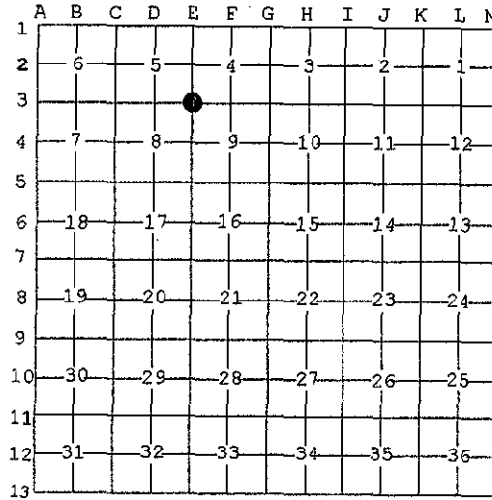
Register of Deeds Stamp & File Number

4. Lot No. \_\_\_\_\_, Recorded Plat \_\_\_\_\_  
 5. Private Claims \_\_\_\_\_

I, George M. Platz, in a field survey on December 7, 1998 do hereby state that under requirements of P.A. 74, Michigan P.A. of 1970, the corner points mentioned in lines 1 and 2 above were in conformance with regulations and rules therefore as required in the current manual of survey instructions of the United States Department of the Interior, Bureau of Land Management or by a decree of a Court of Law and/or that the corner points mentioned in lines 3, 4 and 5 above were in conformance with the rules of the Michigan Board of Land Surveyors or by a Decree of a Court of Law; established, re-established, monumented, recovered, found as expressed below:

**NOTE:** Not more than 2 corners, all in the same town and range, may be recorded on this certificate.

Section corner common to: Sections 4 T.48N., R.27W.  
 Sections 5 T.48N., R.27W.  
 Sections 8 T.48N., R.27W.  
 Sections 9 T.48N., R.27W.



**RATIFIED BY PEER GROUP**  
**P.A. 345 OF 1990**

*Larry J. Bussone*  
 DATE 12/14/98

**A. Description of original monument and accessories and/or subsequent restoration:**

1848: Original US Government Survey by Wells Burt - Set wood post witnessed by:  
 S77.5°E 385 links; 10" Spruce  
 N50.5°W 174 links; 8" Spruce

1987: Survey (unrecorded) and survey computation sheet for the breakdown of section 9 by Larry Bussone, PS 25833. No point set.

1992: Survey recorded in L.2, P.30 Marquette County Records and computation sheet by Glen Van Neste, PS 27464. No point set.

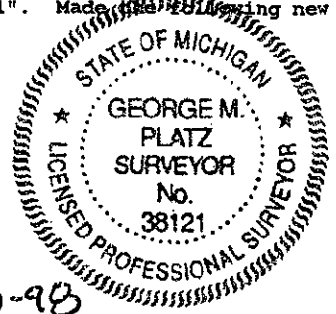
**B. Description of corner evidence found and/or method applied in restoring or reestablishing corner:**

A thorough search found no evidence of any survey monumentation or occupation in the immediate area. The theoretical position of the corner has been used in the breakdown section 8 by Glen Van Neste, PS 27464 and in the breakdown of section 9 by Larry Bussone, PS 25833. The theoretical position of this point is based upon the location of the N 1/4 corner section 9, which was set from an original B.T. stump, and the existing NE corner of Section 9. The NW corner of Section 9 was then set by extending the line from the NE corner of Section 9 through the re-established N 1/4 corner and doubling the distance. Line calls of the original GLO notes are not distinct enough to verify the position of this point. All measurements, obtainable recorded survey information and any other obtained unrecorded survey information made available to Spalding DeDecker Associates is documented in the research dossier. Considering the above information, all known evidence favors accepting the theoretical position of this point.

**C. Description of monument for corner and accessories established to perpetuate locating the position of the corner:**

Set standard Marquette County Remonumentation monument, being a 2 3/8" diameter by 30" aluminum post with 3 1/4" diameter aluminum cap stamped with appropriate corner identification and "1998 PLATZ 38121". Made using new witnesses:

- Az. 12° 76.23'; Set PK nail w/tag no. 38121 in W. face of a 13" Jack Pine.
- Az. 141° 48.65'; Set PK nail w/tag no. 38121 in N. Face of a 7" Jack Pine.
- Az. 211° 45.13'; Set PK nail w/tag no. 38121 in S.W. face of a 5" Jack Pine.
- Az. 340° 84.64'; Set PK nail w/tag no. 38121 in N. face of a 4" Jack Pine.



Signed by George M. Platz

Date 12-30-98

Surveyor's Michigan License No. 38121