

JUL 03 2000

MARQUETTE COUNTY MICHIGAN RECEIVED FOR RECORD

1996 NOV 18 PM 2:27

SECTION

LAND CORNER RECORDATION CERTIFICATE Filing Requirement of Act 74, Mich. P.A. 1970

For corners in

MARQUETTE

(County)

Located In:

Corner Code #

- 1. Public Land Survey T 48N R 27W I-3
2. Property Controlling in Section S T R
3. Miscellaneous Property in Sec. S T R

- 4. Lot No. , Recorded Plat
5. Private Claims

Patricia A. Moulton REGISTER OF DEEDS

LIBER R1 PAGE 306 Register of Deeds Stamp & File Number

I, GERALD W. CARLSON, in a field survey on JUNE 3RD, 1996, do hereby state that under requirements of P.A. 74, Michigan P.A. of 1970, the corner points mentioned in lines 1 and 2 above were in conformance with regulations and rules therefore as required in the current manual of survey instructions of the United States Department of the Interior, Bureau of Land Management or by a decree of a Court of Law and/or that the corner points mentioned in lines 3, 4 and 5 above were in conformance with the rules of the Michigan Board of Land Surveyors or by a Decree of a Court of Law; established, re-established, monumented, recovered, found as expressed below:

NOTE: Not more than 2 corners, all in the same town and range, may be recorded on this certificate.

A. Description of original monument and accessories and/or subsequent restoration:

I-3: Corner common to Sections 2, 3, 10, & 11

1848: Wells Burt's original survey notes describe the corner monument as a Spruce post referenced by:

12" Spruce Pine N58E, 61 links 12" Spruce Pine N31W, 30 links

1916: C.C.I. Co. Water Power coordinate list and notes describe the corner monument as a Standard monument (A galvanized pipe with stamped brass cap.)

1934: M.C.R.C. notes describe the corner monument as a galvanized pipe with brass cap set by C.C.I. Co.

B. Description of corner evidence found and/or method applied in restoring or reestablishing corner:

I-3: 1996: No evidence of the original corner or the CCI iron pipe was found. The corner position was re-established by proportional measurement from traverse to found corners, 1 mile West and 1/2 mile North, East and South using CCI Company Water Power coordinate values. 1 1/2 mile distance East-West was 0.99' long and 1 mile distance North-South was 0.59' long. An iron pipe similar to the found corner 1/2 mile North was found leaning against a tree in the vicinity of the re-set corner, probably removed during road construction or grading.

C. Description of monument for corner and accessories established to perpetuate locating the position of the corner:

I-3: 1996: Set a 2 3/8" O.D. aluminum pipe capped with a 3 1/4" diameter aluminum tablet Marquette County Survey Monument stamped to identify the corner. Monument is 0.4' below ground. on the centerline of a two-track road and 3' South of the South edge of a dirt road. Referenced by:

Green Steel Sign Post w/ Yellow Survey Marker Sign N83W, 12.07'

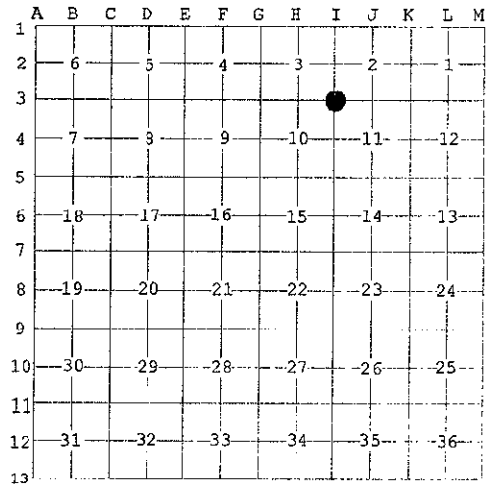
11" Jack Pine N13W, 29.45'

12" Jack Pine N55E, 24.29'

7" Jack Pine S57E, 8.56'

10" Jack Pine S56W, 11.94'

Note: Bearing trees have painted face, butt, and side nail blazes, d.h. measuring nails, and stamped B.T. Tags affixed. Bk. T48N-R27W, Pg. 35



RATIFIED BY PEER GROUP P.A. 345 OF 1990

Larry J. Bussone DATE 10/28/96



Signed by Gerald W. Carlson

Date 10-29-96

Surveyor's Michigan License No. 24589