

COMMISSION

JOB NUMBER: 93300
SHEET NO. : 1-387

LAND CORNER RECORDATION CERTIFICATE
Filing Requirement of Act 74, Mich. P.A. 1970

For corners in

MARQUETTE
(County)

Located In: Corner Code #

1. Public Land Survey	T	47N	R	27W	J-1
	T	48N	R	27W	J-13 ✓
	T		R		
	T		R		
2. Property Controlling in Section	S		T	R	
	S		T	R	
3. Miscellaneous Property in Sec.	S		T	R	
	S		T	R	

RECORDED
1993 DEC 30 PM 1:10
LIBER 1 PAGE 100
Register of Deeds Stamp & File Number

4. Lot No. _____, Recorded Plat _____
5. Private Claims _____

	A	B	C	D	E	F	G	H	I	K	L
2	6	5	4	3	2						
3											
4	7	8	9	10	11	1					
5											
6	18	17	16	15	14	1					
7											
8	19	20	21	22	23	2					
9											
10	30	29	28	27	26	2					
11											
12	31	32	33	34	35	3					
13											

I, GERALD W. CARLSON, in a field survey on Tuesday, December 28, 1993, do hereby certify that under requirements of P.A. 74, Michigan P.A. of 1970, the corner points mentioned in lines 1 and 2 above were in conformance with regulations and rules therefore as required in the current manual of survey instructions of the United States Department of the Interior, Bureau of Land Management or by a decree of a Court of Law and/or that the corner points mentioned in lines 3, 4 and 5 above were in conformance with the rules of the Michigan Board of Land Surveyors or by a Decree of a Court of Law; established, re-established, monumented, re-monumented, recovered, found as expressed below:

NOTE: Not more than 4 corners, all in the same town and range, may be recorded on this certificate.

A. Description of original monument and accessories and/or subsequent restoration:
J-1: Quarter Corner common to Section 2, T47N-R27W and 1892 - C.C.I. records indicate the corner as an iron mushroom Section 35, T48N-R27W. 1846: Austin Burt's original survey set by G.P. Cummings with coordinates N96.95, W12992.76. notes describe the corner monument as an Ironwood post Maas coord. system for the same corner is listed as referenced by: N104.71 W12993.52.
8" Y.Birch N61E, 28 1 1949 - MDOT right-of-way maps indicate the corner as being in place. No corner accessories given.
16" Sugar N60W, 30 1

B. Description of corner evidence found and/or method applied in restoring or reestablishing corner:
1993 - Corner search indicated that the iron mushroom was destroyed during construction of the railroad in the early 1970's. The corner was calculated by proportional bearing and distance between the NE corner of Section 1, and the NW corner of Section 2 using the C.C.I. Company's triangulation coordinates. The angles matched exactly and the distance East is 2655.64 ft. (0.10 ft. longer than C.C.I.) and the distance West is 2648.32 ft. (0.10 ft. longer than C.C.I.). The actual corner falls on the face of the rock cut in an impractical position to set a corner. A witness corner was set 20.00 ft. North on the bisected angle at the 1/4 corner back sighting the Section corner West and sighting the Section corner East (179-49'-29"). See back for sketch. Peer group ratification 12-20-93.

C. Description of monument for corner and accessories established to perpetuate locating the position of the corner:
1993 - Set a 5/8" iron capped with a 3 1/4" diameter aluminum tablet Marquette County Survey Monument stamped to identify the corner referenced by nails in:
3" Poplar N88W 30.66 ft.
10" White Birch N07W 26.00 ft.
5" White Pine N90E 52.82 ft. 4" Jack Pine S87E 71.91 ft.
Monument is 0.20 ft. above ground and is a witness corner 20.00 ft. North of the Quarter Section Corner position set on the bisected angle measured at the 1/4 corner backsighting the Section Corner West and turning to the Section Corner East. The angle calculates to be 179-49'-29". See back of sheet for sketch. Bk. 4, Pg. 93.



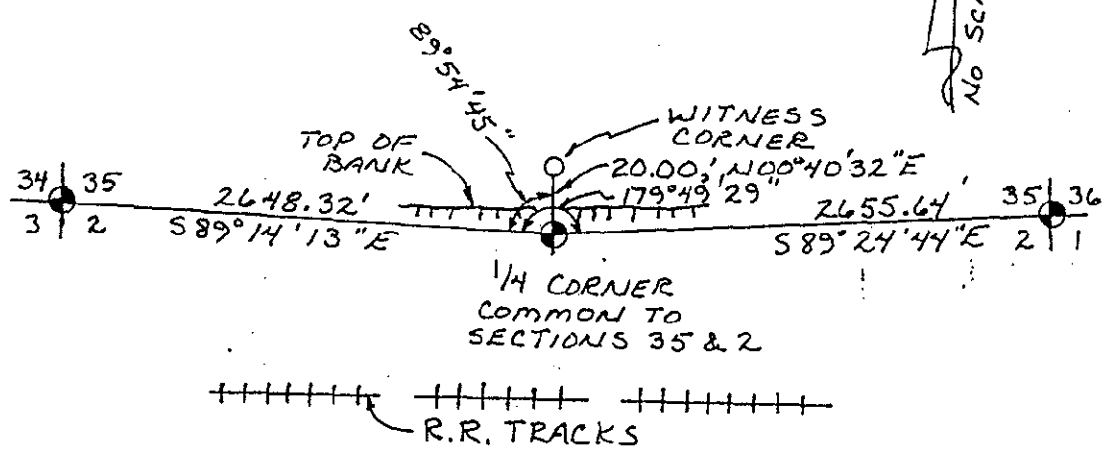
Signed by Gerald W. Carlson Date 12-29-93
24589

Surveyor's Michigan License No. _____

#3068
\$1,000
2,000/acre

T48N - R27W

NO SCALE



T47N - R27W.