

LAND CORNER RECORDATION CERTIFICATE
Filing Requirement of Act 74, Mich. P.A. 1970

For corners in

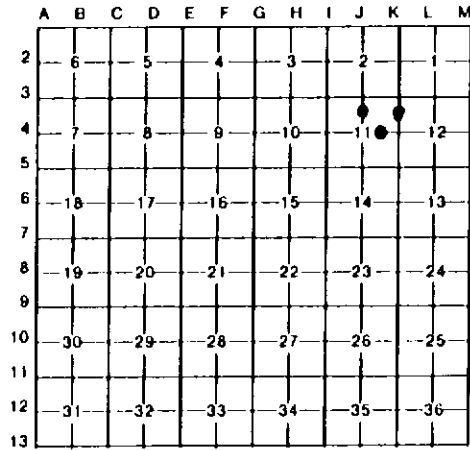
Table with columns: Marquette (County), Located In, Corner Code //
1. Public Land Survey T R
2. Property Controlling in Section S 11 T 50N R 27W 5,7,9
3. Miscellaneous Property in Sec. S T R

Register of Deeds Stamp & File Number

- 4. Lot No. , Recorded Plat
5. Private Claims

I, Paul R. Bressette, in a field survey on September 1994 do hereby certify that under requirements of P.A. 74, Michigan P.A. of 1970, the corner points mentioned in lines 1 and 2 above were in conformance with regulations and rules therefore as required in the current manual of survey instructions of the United States Department of the Interior, Bureau of Land Management or by a decree of a Court of Law and/or that the corner points mentioned in lines 3, 4 and 5 above were in conformance with the rules of the Michigan Board of Land Surveyors or by a Decree of a Court of Law; established, re-established, monumented, re-monumented, recovered, found as expressed below:

NOTE: Not more than 4 corners, all in the same town and range, may be recorded on this certificate.



A. Description of original monument and accessories and/or subsequent restoration:

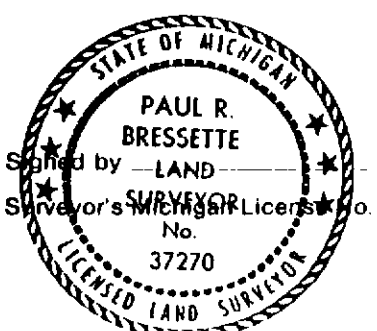
- 5. North One-sixteenth corner of Section 11. Not set in original survey, no evidence of subsequent establishment.
7. North One-sixteenth corner common to Sections 11 and 12. Not set in original survey, no evidence of subsequent establishment.
9. East One-sixteenth corner of Section 11. Not set in original survey, no evidence of subsequent establishment.

B. Description of corner evidence found and/or method applied in restoring or reestablishing corner:

- 5. Corner position established mid-point and on-line between the North and Center Quarter corners of Section 11.
7. Corner position established mid-point and on-line between the Northeast and East Quarter corners of Section 11. Corner falls in the outfall of a beaver dam.
9. Corner position established mid-point and on-line between the East and Center Quarter corners of Section 11.

C. Description of monument for corner and accessories established to perpetuate locating the position of the corner:

Table with 3 columns: 5. DNR monument, 7. DNR monument, 9. DNR monument
6" R.Maple N25E 14.2', 17" Y.Birch N76E 20.15', 5" R.Maple N82E 27.55'
7" R.Maple S84E 17.45', 12" Sugar N68W 14.75', 12" Spruce S36E 17.6'
7" R.Maple S17W 2.05', 8" Hemlock N26W 25.3', 4" Sugar S66W 16.3'
7" R.Maple N26W 20.05', 14" Spruce N04W 23.6', 11" Spruce N54W 21.7'



Paul R. Bressette Date
37270