

LAND CORNER RECORDATION CERTIFICATE
Filing Requirement of Act 74, Mich. P.A. 1970

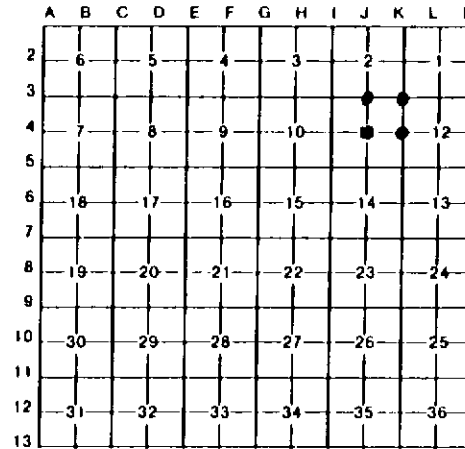
For corners in

Table with columns: Marquette (County), Located In, Corner Code //
1. Public Land Survey T 50N R 27W J-3, J-4, K-3, K-4
2. Property Controlling in Section S T R
3. Miscellaneous Property in Sec. S T R
4. Lot No. , Recorded Plat
5. Private Claims

Register of Deeds Stamp & File Number

I, Paul R. Bressette, in a field survey on September 19 94 do hereby certify that under requirements of P.A. 74, Michigan P.A. of 1970, the corner points mentioned in lines 1 and 2 above were in conformance with regulations and rules therefore as required in the current manual of survey instructions of the United States Department of the Interior, Bureau of Land Management or by a decree of a Court of Law and/or that the corner points mentioned in lines 3, 4 and 5 above were in conformance with the rules of the Michigan Board of Land Surveyors or by a Decree of a Court of Law; established, re-established, monumented, re-monumented, recovered, found as expressed below:

NOTE: Not more than 4 corners, all in the same town and range, may be recorded on this certificate.



A. Description of original monument and accessories and/or subsequent restoration.

- J-3. Quarter Corner common to Sections 2 and 11. 1852: Abner B. Wood, D.S. Set wood post witnessed by: Hemlock 12 N69W 151ks.; Cedar 14 N43E 21 lks. 1940's: Marquette Co. Rd. Comm. records indicate a pine post witnessed by: Poplar 7 S70E 21.3'; Poplar 7 N24E 15.7'.
J-4. Center Quarter Corner of Section 11. Not set in original survey, no evidence of subsequent establishment.
K-3. Section Corner common to Sections 1,2,11 and 12. 1940: Marquette Co. Rd. Comm. Set 3/4" iron pin from OBT witnessed by: Hemlock 10 S11W 25.5'; W.Birch 5 N31E 28.1'.
K-4. Quarter Corner common to Sections 11 and 12. 1852: Abner B. Wood, D.S. Set wood post witnessed by: Sugar 10 N30W 13 lks.; Sugar 16 S54E 15 lks. Found 1" iron pipe and location poster, iron pipe not of record.

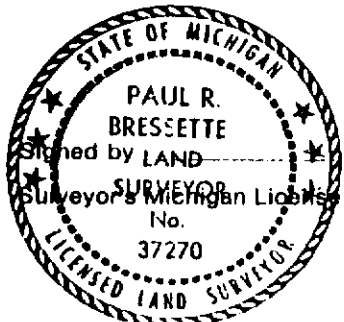
B. Description of corner evidence found and/or method applied in restoring or reestablishing corner:

- J-3. Found 1" iron pipe and MCRC witnesses as described. Both witnesses are dead. Found down cedar stub and a burned out stump in proper positions for OBT's. Replaced iron pipe with DNR monument and witnessed.
J-4. Corner position established at the intersection of the N-S and E-W quarter lines of Section 11.
K-3. Found iron pin and witnesses as described. Remains of OBT still evident (Cedar 12 N18W 10 lks) but no markings found. Replaced iron pin with DNR monument and witnessed.
K-4. No evidence of original survey found. Accepted found iron pipe as corner. Pipe is 5.89' off a straight line and five feet off of a split. Distances match well with the north line of Section 11.

C. Description of monument for corner and accessories established to perpetuate localing the position of the corner:

Table with 4 columns: J-3. DNR monument, J-4. DNR monument, K-3. DNR monument, K-4. DNR monument
1"R.Maple N52E 9.0', 7"R.Maple N21E 28.55', \*14"W.Birch N38E 28.3', 8"Sugar N30E 14.9'
3"R.Maple S01E 8.2', 9"R.Maple S04E 36.4', \*15"Hemlock S18W 25.8', 9"Sugar S53E 4.25'
1"Spruce S83W 9.95', 9"Sugar S40W 39.8', 6"R.Maple N84E 12.15', 9"Sugar S20W 10.75'
1"R.Maple N07W 17.2', 8"Sugar N58W 27.45', 6"Cedar N52W 29.2', 6"Y.Birch N58W 28.5'

\*MCRC witnesses
distance to center of tree



Paul R. Bressette Date
37270