

LAND CORNER RECORDATION CERTIFICATE
Filing Requirement of Act 74, Mich. P.A. 1970

For corners in

Marquette
 (County)

Located In: Corner Code #

1. Public Land Survey	T <u>50N</u> R <u>27W</u>	<u>E4</u>
	T <u>50N</u> R <u>27W</u>	<u>F3</u>
	T _____ R _____	_____
	T _____ R _____	_____
2. Property Controlling in Section	S _____ T _____ R _____	_____
	S _____ T _____ R _____	_____
3. Miscellaneous Property in Sec.	S _____ T _____ R _____	_____
	S _____ T _____ R _____	_____

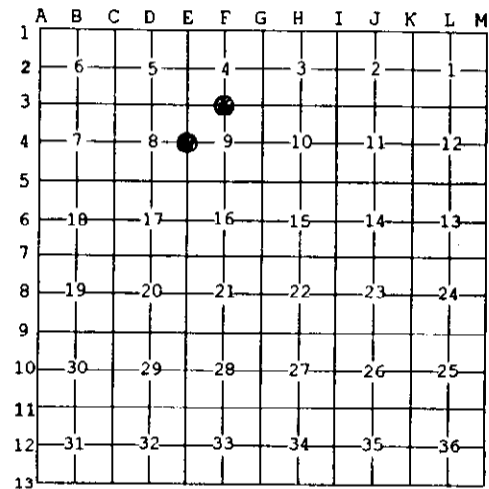
Register of Deeds Stamp & File Number

4. Lot No. _____, Recorded Plat _____
 5. Private Claims _____

Nov 07 2002

I, Stephan J. Szyszkoski, in a field survey on _____, 20____ do hereby state that under requirements of P.A. 74, Michigan P.A. of 1970, the corner points mentioned in lines 1 and 2 above were in conformance with regulations and rules therefore as required in the current manual of survey instructions of the United States Department of the Interior, Bureau of Land Management or by a decree of a Court of Law and /or that the corner points mentioned in lines 3, 4 and 5 above were in conformance with the rules of the Michigan Board of Land Surveyors or by a Decree of a Court of Law; established, re-established, monumented, recovered, found as expressed below:

NOTE: Not more than 2 corners, all in the same town and range, may be recorded on this certificate.



A. Description of original monument and accessories and/or subsequent restoration:

- (E4) Quarter corner common to Sections 8 and 9. 1852 - Established by Abner B. Wood: N6°W between Sections 8 & 9...40.00 Set quarter section post. Sugar 14 S25W 16, Sugar 16 S80E 10. ...80.00 Set post corner of Sections 4-5-8-9.
- (F3) Quarter corner common to Sections 4-9. 1852 - Established by Abner B. Wood: N89 deg. 23'W corrected between Sec 4 & 9...39.98 Set Quarter Section Post. Y. Birch 12 S73E 28, Sugar 8 N32E 33...79.96 Section corner.

B. Description of corner evidence found and/or method applied in restoring or reestablishing corner:

- (E4) The original post and accessories were not recovered. Found a 3/4" ID iron pipe, placed by persons unknown, about N9 deg. W, 51 feet from the corner position. Land owners to east and west had no information to relate concerning this pipe and were not aware of its existence. I did not accept the pipe. Reestablished the corner midway and on a straight line between Section corners 2634.86' north and south.
- (F3) The original post and accessories were not recovered. Reestablished the corner midway and on a line of mean true bearing between Section corners 2633.99' east and west, being the proportionate position of the original record.

C. Description of monument for corner and accessories established to perpetuate locating the position of the corner:

(E4) Set 1"x32" I.pipe with 4" alum. MDNR cap. Blazed, scribed, and set measuring nails in:		(F3) Set 1"IDx32" I.pipe with 4" alum. MDNR cap. Blazed, scribed, and set measuring nails in:	
24" Hemlock N19E 30.75'	1/4S N8T"	11" Hemlock S48E 39.2'	1/4S N8T"
8" Sugar S41E 26.9'	do	6" Sugar S38W 23.45'	do
9" Sugar S11W 30.55'	do	8" Hemlock N74W 42.2'	do
9" Sugar N27W 19.55'	do	9" Sugar N16W 24.35'	do
Bearings are magnetic. Distances are to nail with tag. Placed sq'd sugar post adjacent.		Bearings are magnetic. Distances are to nail with tag. Set sq'd maple post adjacent.	



Signed by Stephan J. Szyszkoski
 Surveyor's Michigan License No. 33986

Date 12/16/02