

LAND CORNER RECORDATION CERTIFICATE
Filing Requirement of Act 74, Mich. P.A. 1970

For corners in

Marquette

(County)

Located In:

Corner Code #

1. Public Land Survey	T 50N R 27W	65
	T ___ R ___	___
	T ___ R ___	___
	T ___ R ___	___
2. Property Controlling in Section	S 9 T 50N R 27W	7
	S ___ T ___ R ___	___
3. Miscellaneous Property in Sec.	S ___ T ___ R ___	___
	S ___ T ___ R ___	___

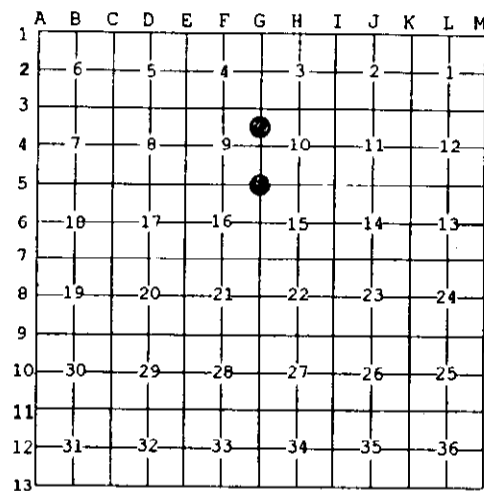
Register of Deeds Stamp & File Number

4. Lot No. _____, Recorded Plat _____
5. Private Claims _____

7 Dec 02 2002
65 Oct 31 2002

I, Stephan J. Szyszkoski, in a field survey on _____, 20____ do hereby state that under requirements of P.A. 74, Michigan P.A. of 1970, the corner points mentioned in lines 1 and 2 above were in conformance with regulations and rules therefore as required in the current manual of survey instructions of the United States Department of the Interior, Bureau of Land Management or by a decree of a Court of Law and /or that the corner points mentioned in lines 3, 4 and 5 above were in conformance with the rules of the Michigan Board of Land Surveyors or by a Decree of a Court of Law; established, re-established, monumented, recovered, found as expressed below:

NOTE: Not more than 2 corners, all in the same town and range, may be recorded on this certificate.



A. Description of original monument and accessories and/or subsequent restoration:

(65) Corner common to Sections 9-10-15-16. 1852 - Established by Abner B. Wood: North true line between Sections 15-16...12.70 Stream 15 C-NW, 16.50 Stream 15 C-NE, 19.25 Stream 15 C-NW...80.00 Set post corner of Sections 9-10-15-16. Hemlock 18 S12E 11, Hemlock 18 N68W 26.

(7-Sec. 9) North 1/16 corner between Sections 9 and 10. Not established in the original survey.

B. Description of corner evidence found and/or method applied in restoring or reestablishing corner:

(65) The original post and accessories were not recovered. Found no acceptable evidence of the position of the original corner on the ground. Reestablished the corner by double proportionate measurement to the original record between Section corner 5253.94' west (5262.8' GLO), Quarter corner 7924.81' east (7938.5' GLO), Section corner 5271.98' north (5280' GLO), and stream crossing 4003.38' south (4009.5 GLO). The stream crossing is a very distinct call, made so in part by its winding nature at this location, passing across the section line three times in a very short span along the section line, the distance between each crossing agreeing with the record. There are several old hemlock stumps near the corner location, none with markings and no two will fit the record acceptably.

(7-Sec. 9) Established the corner midway and on a straight line between Section corner 1317.99' north and Quarter corner 1317.99' south.

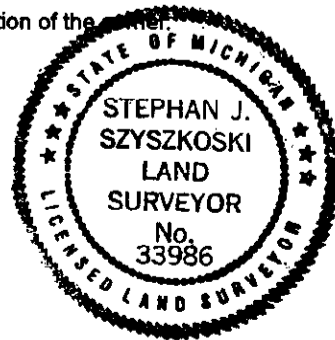
C. Description of monument for corner and accessories established to perpetuate locating the position of the corner:

(65) Set 1"IDx32" I.pipe with 4" alum. MDNR cap. Blazed, scribed, and set measuring nails in:
5" Spruce N65E 25.7' "S10 N8T"
5" Y.Birch N81E 50.91' "S10 N8T"
15" Spruce S19E 35.3' "S15 N8T"
5" Maple S52W 6.2' "S16 N8T"

Bearings are magnetic. Distances are to nail with tag.

(7) Set 1"IDx32" I.pipe with 4" alum. MDNR cap. Blazed, scribed, and set measuring nails in:
8" Oak N04W 11.40' "1/16S 8T"
6" R.Pine S77E 46.70' do
14" W.Pine S14E 7.95' do
11" twin Oak N83W 52.75' do

Squared sugar post adjacent. Bearings are magnetic. Distances are to nail with tag.



Signed by Stephan J. Szyszkoski
Surveyor's Michigan License No. 33986

Date 12/16/02