

**LAND CORNER RECORDATION CERTIFICATE**  
Filing Requirement of Act 74, Mich. P.A. 1970

For corners in

Marquette  
(County)

Located In: Corner Code #

1. Public Land Survey	T <u>50N</u> R <u>27W</u>	<u>64</u>
	T ___ R ___	___
	T ___ R ___	___
	T ___ R ___	___
2. Property Controlling in Section	S <u>9</u> T <u>50N</u> R <u>27W</u>	<u>3</u>
	S ___ T ___ R ___	___
3. Miscellaneous Property in Sec.	S ___ T ___ R ___	___
	S ___ T ___ R ___	___

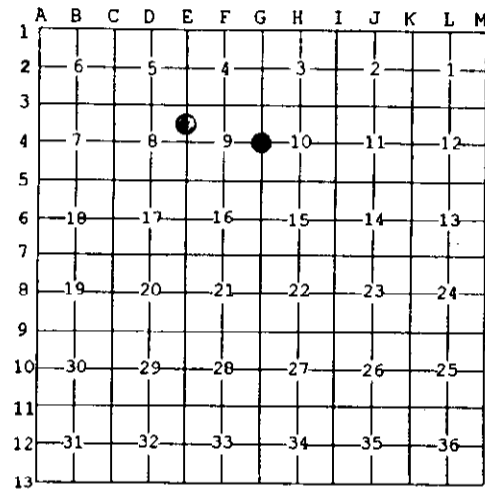
Register of Deeds Stamp & File Number

4. Lot No. \_\_\_\_\_, Recorded Plat \_\_\_\_\_  
5. Private Claims \_\_\_\_\_

64 Nov 26 2002  
3 Dec 03 2002

I, Stephan J. Szyszkoski, in a field survey on \_\_\_\_\_, 20\_\_ do hereby state that under requirements of P.A. 74, Michigan P.A. of 1970, the corner points mentioned in lines 1 and 2 above were in conformance with regulations and rules therefore as required in the current manual of survey instructions of the United States Department of the Interior, Bureau of Land Management or by a decree of a Court of Law and/or that the corner points mentioned in lines 3, 4 and 5 above were in conformance with the rules of the Michigan Board of Land Surveyors or by a Decree of a Court of Law; established, re-established, monumented, recovered, found as expressed below:

NOTE: Not more than 2 corners, all in the same town and range, may be recorded on this certificate.



A. Description of original monument and accessories and/or subsequent restoration:

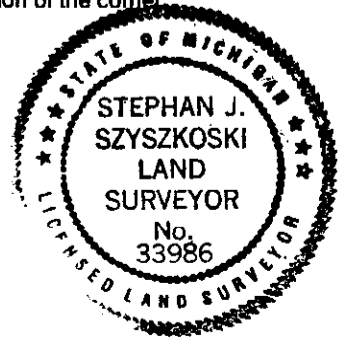
(64) Quarter corner common to Sections 9-10. 1852 - Established by Abner B. Wood: North true line between Sections 9-10... 40.00 Set quarter Section post. Hemlock 30 N80E 25, Spruce 6 N60W 8...80.00 Set post corner of Sections 3-4-9-10.  
(3-Sec. 9) North 1/16 corner between Sections 8-9. Not established in the original survey.

B. Description of corner evidence found and/or method applied in restoring or reestablishing corner:

(64) The original post and accessories were not recovered. Found no acceptable evidence of the position of the original corner on the ground. Reestablished the corner midway and on a straight line between Section corners 2635.99' north and south (true bearing of line N 00 deg. 13' E M, North R.) From the corner thus established I found a 1.25"x0.25" iron bar, set by persons unknown, projecting 3 ft. S77E, 10.9' distant which I did not accept for the corner.  
(3-Sec. 9) Established the corner midway and on a straight line between Section corner 1317.43' north and Quarter corner 1317.43' south.

C. Description of monument for corner and accessories established to perpetuate locating the position of the corner:

(64) Set 1"IDx32" I.pipe with 4" alum. MDNR cap. Blazed, scribed, and set measuring nails in:	(3) Set 1"IDx32" I.pipe with 4" alum. MDNR cap. Blazed, scribed, and set measuring nails in:
11" Spruce N05E 25.2'      "1/4S NBT"	12" Sugar N44E 28.75'      "1/16S BT"
8" Maple S86E 13.5'      do	12" Hemlock S22E 38.0'      do
12" Spruce S01W 30.5'      do	15" Hemlock S36W 1.02'      do
10" Spruce N53W 2.7'      do	6" Y.Birch N56W 13.65'      do
Set sq'd spruce post adjacent. Bearings are magnetic. Distances are to nail with tag.	Bearings are magnetic. Distances are to nail with tag.



Signed by Stephan J. Szyszkoski  
Surveyor's Michigan License No. 33986

Date 12/16/02