

**LAND CORNER RECORDATION CERTIFICATE**  
Filing Requirement of Act 74, Mich. P.A. 1970

For corners in

Marquette  
(County)

Located In:

Corner Code #

1. Public Land Survey	T <u>50N</u> R <u>27W</u>	<u>E8</u>
	T _____ R _____	_____
	T _____ R _____	_____
	T _____ R _____	_____
2. Property Controlling in Section	S <u>10</u> T <u>50N</u> R <u>27W</u>	<u>5</u>
	S _____ T _____ R _____	_____
3. Miscellaneous Property in Sec.	S _____ T _____ R _____	_____
	S _____ T _____ R _____	_____

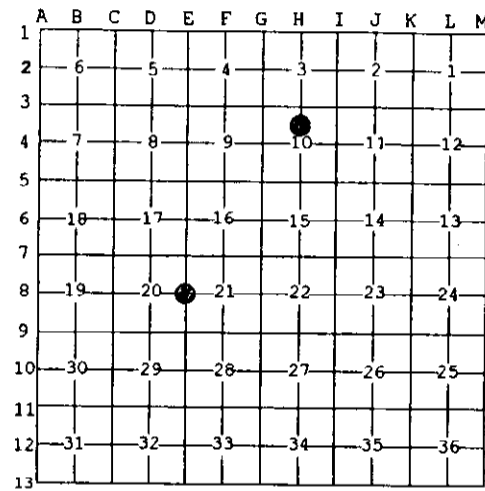
Register of Deeds Stamp & File Number

4. Lot No. \_\_\_\_\_, Recorded Plat \_\_\_\_\_  
5. Private Claims \_\_\_\_\_

5 Dec 02 2002  
E8 Oct 15 2002

I, Stephan J. Szyszkoski, in a field survey on \_\_\_\_\_, 20\_\_\_\_ do hereby state that under requirements of P.A. 74, Michigan P.A. of 1970, the corner points mentioned in lines 1 and 2 above were in conformance with regulations and rules therefore as required in the current manual of survey instructions of the United States Department of the Interior, Bureau of Land Management or by a decree of a Court of Law and/or that the corner points mentioned in lines 3, 4 and 5 above were in conformance with the rules of the Michigan Board of Land Surveyors or by a Decree of a Court of Law; established, re-established, monumented, recovered, found as expressed below:

NOTE: Not more than 2 corners, all in the same town and range, may be recorded on this certificate.



**A. Description of original monument and accessories and/or subsequent restoration:**

(E8) Quarter corner common to Sections 20-21. 1852 - Established by Abner B. Wood Jr.: N5'E between Sections 20 and 21...39.965 Set quarter section post. Hemlock 12 S75E 36, Hemlock 16 S55W 34. ca. 1940-1950 - Notes in FB 660 Marquette County Road Commission, Ishpeming Office say: S.20 E1/4 cor. I.P. Hemlock 16 N85W 9 L (stub), Maple 8 S56E 12.5' (New), Maple 6 N20E 9.8' (New). Found no subsequent record.  
(5-Sec. 10) North 1/16 corner, Section 10. Not established in the original survey.

**B. Description of corner evidence found and/or method applied in restoring or reestablishing corner:**

(E8) The original post and accessories were not recovered. Found a 1/2" iron pipe at substantial record bearing and distance from the NBTs noted in the MCRC notes: The 8" Maple now 15" DBH with overgrown blazes, the Hemlock 16 a rotted stump, the 6" Maple is gone but it appears it may have had a "twin", now 8" DBH, which was found immediately adjacent to the record position, unmarked. Distance south to recorded corner (RLS 8317, 1978) checks very well with the record distance (2632.79' M, 2637.7 GLO). Distance north to E5 remonumented in this survey checks fairly well with the record (7876.24' M, 7917.7 GLO). True bearing to north is only 1 minute east of the GLO record. Left the monument in place and made new witnesses as described below.  
(5-Sec. 10) Established the corner midway and on a straight line between Quarter corner 1318.82' north and Center of Section 1318.82' south.

**C. Description of monument for corner and accessories established to perpetuate locating the position of the corner:**

(E8) Found 1/2" I.pipe. Blazed, scribed, and set measuring nails in:	(5) Set 1"IDx32" I.pipe with 4" alum. MDNR cap. Blazed, scribed, and set measuring nails in:
15" Maple S51E 12.85' old blazes *	7" Sugar N57E 19.04' "1/16S BT"
8" Maple N31E 10.3' "1/4S NBT"	10" Sugar S57E 21.20' do
5" Sugar S52W 10.8' do	20" Oak S23W 36.63' do
9" Sugar N74W 18.3' do	6" Sugar N62W 23.03' do
Bearings are magnetic. Distances are to nail with tag. Set squared sugar post adjacent. * denotes old NBT.	Squared spruce post adjacent. Bearings are magnetic. Distances are to nail with tag.



Signed by Stephan J. Szyszkoski  
Surveyor's Michigan License No. 33986

Date 12/16/02