

LAND CORNER RECORDATION CERTIFICATE
Filing Requirement of Act 74, Mich. P.A. 1970

For corners in

Marquette
 (County)

Located in: Corner Code #

1. Public Land Survey	T <u>50N</u> R <u>27W</u>	<u>E5</u>
	T <u>50N</u> R <u>27W</u>	<u>F4</u>
	T _____ R _____	_____
	T _____ R _____	_____
2. Property Controlling in Section	S _____ T _____ R _____	_____
	S _____ T _____ R _____	_____
3. Miscellaneous Property in Sec.	S _____ T _____ R _____	_____
	S _____ T _____ R _____	_____

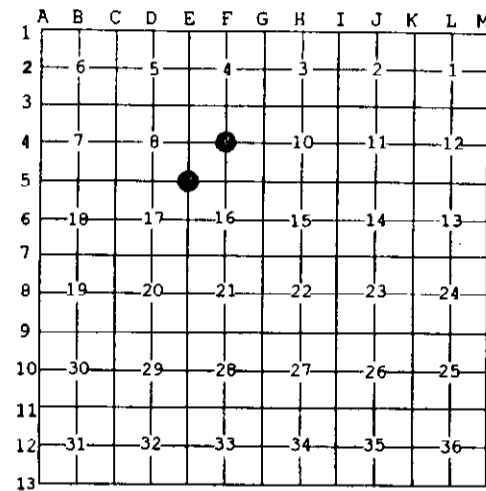
Register of Deeds Stamp & File Number

4. Lot No. _____, Recorded Plat _____
 5. Private Claims _____

F4 Dec 04 2002
 E5 Nov 26 2002

I, Stephan J. Szyszkoski, in a field survey on _____, 20____ do hereby state that under requirements of P.A. 74, Michigan P.A. of 1970, the corner points mentioned in lines 1 and 2 above were in conformance with regulations and rules therefore as required in the current manual of survey instructions of the United States Department of the Interior, Bureau of Land Management or by a decree of a Court of Law and/or that the corner points mentioned in lines 3, 4 and 5 above were in conformance with the rules of the Michigan Board of Land Surveyors or by a Decree of a Court of Law; established, re-established, monumented, recovered, found as expressed below:

NOTE: Not more than 2 corners, all in the same town and range, may be recorded on this certificate.



A. Description of original monument and accessories and/or subsequent restoration:

- (E5) Corner common to Sections 8-9-16-17. 1852 - Established by Abner B. Wood: North true line between Sections 16-17...44.00 Descend hill and ledge 80 C-ME&SW...51.40 Stream 60 C-NE...79.15 Stream 5 C-SE...80.00 Set post corner of Sections 8-9-16-17. Y.Birch 12 S70E 4, Hemlock 12 N70W 37. Found no subsequent record.
- (F4) Center of Section 9. Not established in the original survey.

B. Description of corner evidence found and/or method applied in restoring or reestablishing corner:

- (E5) The original post and accessories were not recovered. Found a 1/2" ID iron pipe at the corner position, set by persons unknown. Verify the position of the pipe with respect to the original record as follows: South: stream 56'R, 50'M; stream 1888'R, 1883'M; descend hill and ledge 2376'R, 2393'M. West: stream 165'R, 144'M; East: stream 1943'R, 1942'M, 1/4 corner 2631.4'R, 2626.97'M; North: Section corner 5280'R, 5269.73'M. Observed true bearings to adjacent corners N03'E M, N6'W R; S89 deg. 23'E M, S89 deg. 32'E R. Accepted the pipe as the best available evidence of the position of the original corner and in its place, put a monument as described below. (R=GLO record.)
- (F4) Established the corner at the intersection of straight lines connecting opposite 1/4 corners.

C. Description of monument for corner and accessories established to perpetuate locating the position of the corner:

- | | |
|---|---|
| (E5) Set 1"IDx32" I.pipe with 4" alum. MDNR cap. Blazed, scribed, and set measuring nails in:
9" Oak N10E 9.35' "S9 NBT"
5" Sugar N67E 20.75' "S9 NBT"
8" Oak S06E 22.5' "S16 NBT"
10" dble Oak S40W 26.3' "S17 NBT"
Sq'd spruce post adjacent. 2"x2" iron fence post adjacent. Bearings are magnetic. Distances are to nail with tag. | (F4) Set 1"IDx32" I.pipe with 4" alum. MDNR cap. Blazed, scribed, and set measuring nails in:
13" Oak N05E 32.00' "C1/4 8T"
5" Sugar N63E 20.90' do
10" Maple S35E 15.57' do
7" Sugar S80W 6.72' do
Sq'd sugar post adjacent. Bearings are magnetic. Distances to nail with tag. |
|---|---|



Signed by Stephan J. Szyszkoski
 Surveyor's Michigan License No. 33986

Date 12/16/02