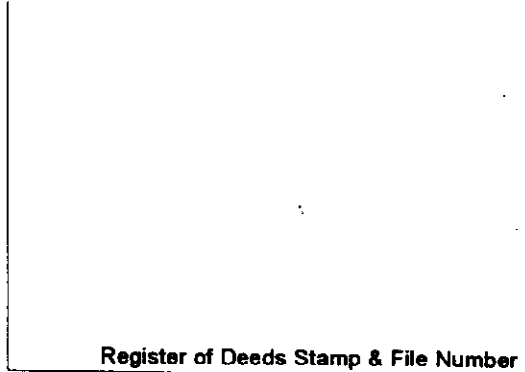


**LAND CORNER RECORDATION CERTIFICATE**  
**Filing Requirement of Act 74, Mich. P.A. 1970**

For corners in

Marquette	Located In:	Corner Code #
(County)		
1. Public Land Survey	T <u>50N</u> R <u>27M</u>	<u>E3</u>
	T _____ R _____	_____
	T _____ R _____	_____
	T _____ R _____	_____
2. Property Controlling in Section	S <u>9</u> T <u>50N</u> R <u>27M</u>	<u>5</u>
	S _____ T _____ R _____	_____
3. Miscellaneous Property in Sec.	S _____ T _____ R _____	_____
	S _____ T _____ R _____	_____

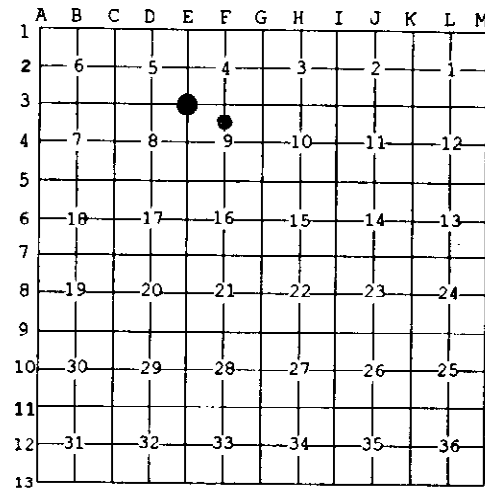


4. Lot No. \_\_\_\_\_, Recorded Plat \_\_\_\_\_  
 5. Private Claims \_\_\_\_\_

5 Dec 03 2002  
 E3 Nov 07 2002

I, Stephan J. Szyszkoski, in a field survey on \_\_\_\_\_, 20\_\_\_\_ do hereby state that under requirements of P.A. 74, Michigan P.A. of 1970, the corner points mentioned in lines 1 and 2 above were in conformance with regulations and rules therefore as required in the current manual of survey instructions of the United States Department of the Interior, Bureau of Land Management or by a decree of a Court of Law and/or that the corner points mentioned in lines 3, 4 and 5 above were in conformance with the rules of the Michigan Board of Land Surveyors or by a Decree of a Court of Law; established, re-established, monumented, recovered, found as expressed below:

**NOTE:** Not more than 2 corners, all in the same town and range, may be recorded on this certificate.



**A. Description of original monument and accessories and/or subsequent restoration:**

(E3) Corner common to Sections 4-5-8-9. 1852 - Established by Abner B. Wood: N6°W true line between Sections 8 & 9...60.60 stream 4 C-E... 80.00 set post corner of Sections 4-5-8-9. Sugar 10 S75W 26, Sugar 8 N58E 11. Found no subsequent record.  
 (5-Sec. 9) North 1/16 corner, Section 9. Not established in the original survey.

**B. Description of corner evidence found and/or method applied in restoring or reestablishing corner:**

(E3) The original post and accessories were not recovered. Found a 1" dia. electrical conduit, projecting 10" a.g. with a coupling mounted on top, with 3 trees, painted, identifying this pipe as the corner, painted blue line running to the north from this position, and 2 blazed trees facing the conduit. Distances south and east to adjacent monumented section corners check well with the GLO record, both being about 10' shorter than the original measure. This index error was observed on several other lines in this area of the township. Distance south to stream (1265'M 1244' GLO), West to outcrop of rock 40 links north of line (1840'M 1815' GLO), and North to top of outcrop (2250'M, 2211' GLO) all check fairly well with the record. Bearing south to section corner is about 9 minutes east of the record, close to the observed index error of approx. 10 minutes east observed in this part of the township. The monument's position being in accord with the original record, I accept it, in spite of its casual character, as the best available evidence of the position of the original corner. Replaced the monument with a standard DNR monument as described below.

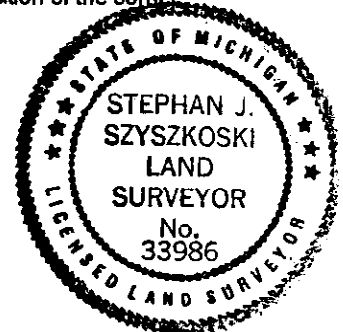
(5-Sec. 9) Established the corner midway and on a straight line between Quarter corner 1317.62' north and Center of Section 1317.62' south

(E3) Set 1"IDx32" I.pipe with 4" alum. MDNR cap. Blazed, scribed, and set measuring nails in:  
 9" Hemlock N10W 6.95' "S5 NBT"  
 14" Hemlock S44E 24.4' "S9 NBT"  
 10" Oak S05W 31.95' "S8 NBT"  
 15" Oak S70W 19.1' "S8 NBT"

Bearings are magnetic. Distances are to nail with tag. Set sq'd sugar post adjacent.

(5) Set 1"IDx32" I.pipe with 4" alum. MDNR cap. Blazed, scribed, and set measuring nails in:  
 6" Oak N16E 16.15' "1/16S 8T"  
 8" Oak S58E 23.0' do  
 7" Oak S56W 8.95' do  
 5" Oak N09W 16.45' do

Bearings are magnetic. Distances to nail with tag. Made mon. firm in a mound of rock.



Signed by Stephan J. Szyszkoski  
 Surveyor's Michigan License No. 33986

Date 12/16/02