

**LAND CORNER RECORDATION CERTIFICATE**  
Filing Requirement of Act 74, Mich. P.A. 1970

For corners in  
Marquette  
(County)

	Located In:	Corner Code #
1. Public Land Survey	T 50N R 27W	H4
	T 50N R 27W	F5
	T R	
	T R	
2. Property Controlling in Section	S T R	
	S T R	
3. Miscellaneous Property in Sec.	S T R	
	S T R	

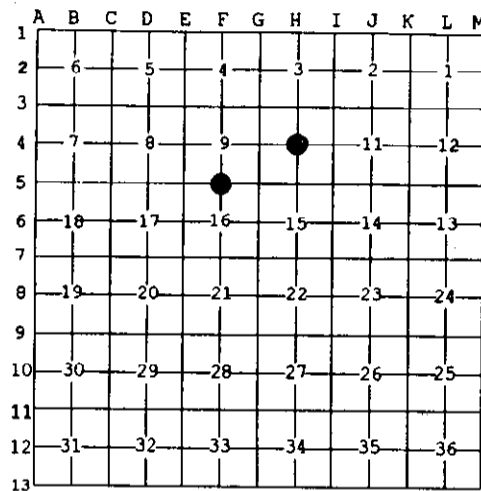
Register of Deeds Stamp & File Number

4. Lot No. \_\_\_\_\_, Recorded Plat \_\_\_\_\_  
5. Private Claims \_\_\_\_\_

F5 Nov 26 2002  
H4 Dec 05 2002

I, Stephan J. Szyszkoski, in a field survey on \_\_\_\_\_, 20\_\_\_\_ do hereby state that under requirements of P.A. 74, Michigan P.A. of 1970, the corner points mentioned in lines 1 and 2 above were in conformance with regulations and rules therefore as required in the current manual of survey instructions of the United States Department of the Interior, Bureau of Land Management or by a decree of a Court of Law and /or that the corner points mentioned in lines 3, 4 and 5 above were in conformance with the rules of the Michigan Board of Land Surveyors or by a Decree of a Court of Law, established, re-established, monumented, recovered, found as expressed below:

NOTE: Not more than 2 corners, all in the same town and range, may be recorded on this certificate.



A. Description of original monument and accessories and/or subsequent restoration:

- (H4) Center of Section 10. Not established in the original survey.
- (F5) Quarter corner common to Sections 9-16. 1852 - Established by Abner B. Wood: N89 deg. 32'W corrected between Secs. 9-16...33.40 Stream 30 C-NNW, 36.90 Stream 30 C-SE, 38.70 Stream 30 C-N, 39.87 Y.Birch 20 for corner. Ironwood 10 N35E 32, 50.30 Stream 60 C-ENE...79.74 Section corner.

B. Description of corner evidence found and/or method applied in restoring or reestablishing corner:

- (H4) Established the corner at the intersection of straight lines connecting opposite 1/4 corners.
- (F5) The original post and accessories were not recovered. Reestablished the corner midway and on a line of mean true bearing between Section corners 2626.97' east and west (observed the true bearing of this line as N89 deg. 23' W, a 9 minute index to the original bearing. Index errors of that approx. magnitude were also observed on other section lines in this area of the township). The stream calls noted above (with the exception of the first - at 33.40 chains) check extremely well with the proportionate position. From the corner monumented, I found a 1/2" ID iron pipe placed by persons unknown, projecting 18", firm, and three overgrown blazes facing it (approx 15 years old). A 1994 Longyear location poster identifies this pipe as the 1/4 corner. I found the pipe to be about N02E 43 feet distant from the proportionate position. It does not fit the record and I did not take it as acceptable evidence of the position of the original corner. Drove the 1/2" pipe flush to ground.

C. Description of monument for corner and accessories established to perpetuate locating the position of the corner:

- |   |   |
|---|---|
| (H4) Set 1"IDx32" I.pipe with 4" alum. MDNR cap. Blazed, scribed, and set measuring nails in: | (F5) Set 1"IDx32" I.pipe with 4" alum. MDNR cap. Blazed, scribed, and set measuring nails in: |
| 6" Maple N19E 36.45' C1/4 BT  | 7" Sugar N12E 43.6' 1/4S NBT  |
| 5" Maple N61E 38.5' do  | 13" Sugar S01W 7.4' do  |
| 2" Maple S70W 44.6' do  | 7" Sugar S56W 8.65' do  |
| 4" W.Pine N19W 26.45' do  | 17" dbl Oak N47W 49.45' do  |
| Sq'd sugar post adjacent. Bearings are magnetic. Distances are to nail with tag.              | Bearings are magnetic. Distances to nail with tag. Set sq'd spruce post adjacent.             |



Signed by Stephan J. Szyszkoski  
Surveyor's Michigan License No. 33986

Date 12/16/07