

LAND CORNER RECORDATION CERTIFICATE
Filing Requirement of Act 74, Mich. P.A. 1970

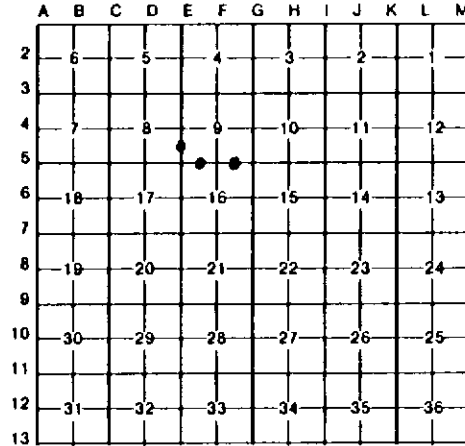
For corners in

<u>Marquette</u> <small>(County)</small>	Located In:	Corner Code #/
1. Public Land Survey	T _____ R _____	_____
	T _____ R _____	_____
	T _____ R _____	_____
2. Property Controlling in Section	S <u>9</u> T <u>50N</u> R <u>28W</u>	<u>10, 15, 16.</u>
	S _____ T _____ R _____	_____
3. Miscellaneous Property in Sec.	S _____ T _____ R _____	_____
	S _____ T _____ R _____	_____

Register of Deeds Stamp & File Number

4. Lot No. _____, Recorded Plat _____
 5. Private Claims _____

I, Paul Bressette, in a field survey on 5/26/92, 19_____, do hereby certify that under requirements of P.A. 74, Michigan P.A. of 1970, the corner points mentioned in lines 1 and 2 above were in conformance with regulations and rules therefore as required in the current manual of survey instructions of the United States Department of the Interior, Bureau of Land Management or by a decree of a Court of Law and/or that the corner points mentioned in lines 3, 4 and 5 above were in conformance with the rules of the Michigan Board of Land Surveyors or by a Decree of a Court of Law; established, re-established, monumented, re-monumented, recovered, found as expressed below:



NOTE: Not more than 4 corners, all in the same town and range, may be recorded on this certificate.

A. Description of original monument and accessories and/or subsequent restoration:

10. South 1/16 corner common to Sections 8 and 9. Not set in original survey, no evidence of subsequent establishment.
15. West 1/16 corner common to Sections 9 and 16. Not set in original survey, no evidence of subsequent establishment.
16. East 1/16 corner common to Sections 9 and 16. Not set in original survey, no evidence of subsequent establishment.

B. Description of corner evidence found and/or method applied in restoring or reestablishing corner:

10. Corner established mid-point and on-line between the southwest and west quarter corners of Section 9.
15. Corner established mid-point and on-line between the southwest and south quarter corners of Section 9. Corner falls in road.
16. Corner established mid-point and on-line between the southeast and south quarter corners of Section 9. Corner is on south side of Co. Rd. AAA.

C. Description of monument for corner and accessories established to perpetuate locating the position of the corner:

- | | | |
|--|---|--|
| 10. DNR Monument
4" maple, N62E, 8.5'
12" sugar, S21E, 24.2'
21" w.pine, S89W, 28.1'
20" w.pine, N23W, 34.2' | 15. DNR Monument
9" oak, N77E, 31.1'
10" w.pine, S46W, 37.3'
8" w.pine, N08W, 10.5'
Road ζ South 5.0' | 16. DNR Monument
10" maple, S64E, 12.8'
10" maple, S70W, 33.1'
10" hemlock, N88W, 34.5'
10" maple, N03W, 27.1' |
|--|---|--|

Signed by Paul R. Bressette
 Surveyor's Michigan License No. 37270

Date 9-28-92

