

LAND CORNER RECORDATION CERTIFICATE
Filing Requirement of Act 74, Mich. P.A. 1970

For corners in

Marquette
(County)

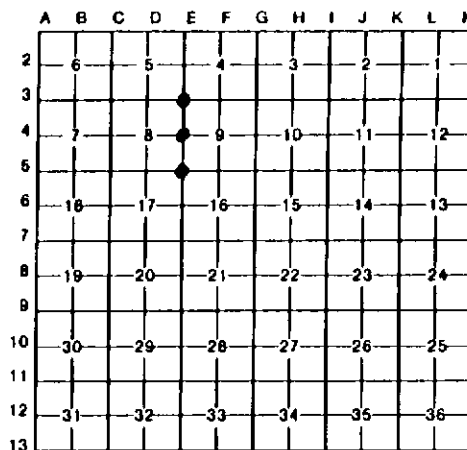
Located In:

Corner Code =//

- 1. Public Land Survey T 50N R 28W E-3, E-4, E-5.
2. Property Controlling in Section S T R
3. Miscellaneous Property in Sec. S T R

Register of Deeds Stamp & File Number

- 4. Lot No. , Recorded Plat
5. Private Claims



I, Paul Bressette, in a field survey on 5/27, 19 92, do hereby certify that under requirements of P.A. 74, Michigan P.A. of 1970, the corner points mentioned in lines 1 and 2 above were in conformance with regulations and rules therefore as required in the current manual of survey instructions of the United States Department of the Interior, Bureau of Land Management or by a decree of a Court of Law and/or that the corner points mentioned in lines 3, 4 and 5 above were in conformance with the rules of the Michigan Board of Land Surveyors or by a Decree of a Court of Law; established, re-established, monumented, re-monumented, recovered, found as expressed below:

NOTE: Not more than 4 corners, all in the same town and range, may be recorded on this certificate.

A. Description of original monument and accessories and/or subsequent restoration:

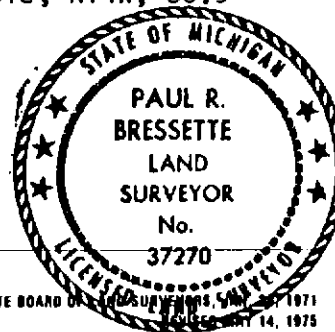
- E-3. Section corner common to Sections 4, 5, 8, and 9. 1852: Abner B. Wood, Jr. D.S. set wood post witnessed by Y. Birch 18 S48E, 35 Lks. Hemlock 6 S50W, 27 Lks.
E-4. Quarter corner common to Sections 8 and 9. 1852: Abner B. Wood, Jr. D.S. Set wood post witnessed by: Spruce 10 N18E, 19 Lks. Sugar 10 S78W, 24 Lks.
E-5. Section corner common to Sections 8, 9, 16 and 17. 1852: Abner B. Wood, Jr. D.S. set wood post witnessed by: B. Oak 14, S48W, 23 Lks. W. Pine, 6, N03E, 13 Lks.

B. Description of corner evidence found and/or method applied in restoring or reestablishing corner:

- E-3. Found 3/4" iron pipe and cedar signature tree dated 1939. Possible Y. Birch OBT southeast. Position fits well with stream to south. Replaced iron pipe with DNR monument and witnessed.
E-4. No evidence of original monument or accessories found. Corner reestablished mid-point and on-line between the Northwest and Southwest corners of Section 9.
E-5. Found 1" iron pipe and a dead J.Pine witness N30E, 48.2' set by Marquette County Road Commission in 1947. Replaced iron pipe with DNR monument and witnessed.

C. Description of monument for corner and accessories established to perpetuate locating the position of the corner:

- E-3. DNR Monument 3" sugar, N77E, 27.1' 5" sugar, S50E, 16.0' 14" sugar, S48W, 10.1' 12" cedar, N89W, 23.7'
E-4. DNR Monument 21" sugar, S29E, 34.0' 7" sugar, S10W, 15.0' 12" sugar, N45W, 10.6' 14" sugar, N20W, 21.3'
E-5. DNR Monument 12" j.pine, N10E, 29.8' 8" maple, S10E, 2.7' 4" maple, S89W, 50.9' 6" maple, N14W, 35.9'



Signed by Paul R. Bressette
Surveyor's Michigan License No. 37270

Date 9-28-92