

LAND CORNER RECORDATION CERTIFICATE
Filing Requirement of Act 74, Mich. P.A. 1970

For corners in
Marquette

(County)

Located In: Corner Code #

1. Public Land Survey	T <u>52</u> N	R <u>29</u> W	C9
	T <u>52</u> N	R <u>29</u> W	E7
	T _____	R _____	_____
	T _____	R _____	_____
2. Property Controlling in Section	S _____	T _____ R _____	_____
	S _____	T _____ R _____	_____
3. Miscellaneous Property in Sec.	S _____	T _____ R _____	_____
	S _____	T _____ R _____	_____

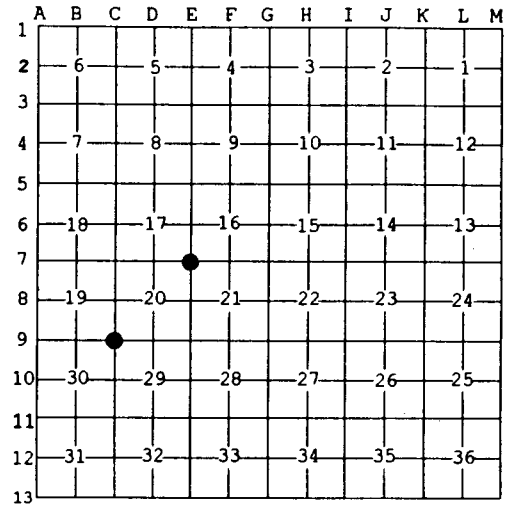
Register of Deeds Stamp & File Number

4. Lot No. _____, Recorded Plat _____
 5. Private Claims _____

Jun 04 2002

I, Stephan J. Szyszkoski, in a field survey on _____, 20____ do hereby state that under requirements of P.A. 74, Michigan P.A. of 1970, the corner points mentioned in lines 1 and 2 above were in conformance with regulations and rules therefore as required in the current manual of survey instructions of the United States Department of the Interior, Bureau of Land Management or by a decree of a Court of Law and /or that the corner points mentioned in lines 3, 4 and 5 above were in conformance with the rules of the Michigan Board of Land Surveyors or by a Decree of a Court of Law, established, re-established, monumented, recovered, found as expressed below:

NOTE: Not more than 2 corners, all in the same town and range, may be recorded on this certificate.



A. Description of original monument and accessories and/or subsequent restoration:

(C9) Corner common to Sections 19-20-29-30. 1846: Established by Hubbard and Ives. North between Sections 29 & 30...80.00 Section corner summit of small hill of trap rock. W.Pine 16 S20W 36, Hemlock 14 N9E 21. 1942: W.Pine OBT recovered by N.T.Thompson, RLS. His notes of June 2, 1942 state: Set Iron pipe flange on bottom. New B.T. W.Pine 14 N51E 26'8", Hemlock 7 S50W 21' 4".
 (E7) Corner common to Sections 16-17-20-21. 1846: Established by Hubbard and Ives. North between Sections 20 & 21...80.00 Set post corner Sect. 16-17-20-21. Sugar 12 S52W 20, Sugar 18 N62E 26. 1939: Notes of N.T.Thompson, RLS, state: ...starting north bet. 20 & 21 V.O, No 1/4 cor. set hem post. Continued on through to cor. Found old Birch stub that looked like B.T. Set hem post on cross line of 16-17-20-21. Run E hit N. of 1/4 20 pcs. B.T. Maple 14".

B. Description of corner evidence found and/or method applied in restoring or reestablishing corner:

(C9) Recovered the 1942 monument, a 2.5" OD iron pipe with flange, fallen over, adjacent to a 3.5' dia. rock mound. Recovered the 1942 NBT W.Pine, a dead standing stub, and drove the existing pipe in the rock mound, at record distance from the W.Pine NBT, and in an old N-S fence line. The remains of the OBT W.Pine are in place, in poor condition, with some scribing visible, at record bearing and distance. The Hemlock NBT was recovered but is down and rotting at approx. record bearing and distance. Measured the magnetic bearing to W.Pine NBT and found it to be N59E.
 (E7) Original post and accessories not recovered. Found a 1" ID iron pipe, projecting 2.5' a.g. with a 3/4" iron pipe adjacent. Both were found in the post hole of a rotted and down wood post. Blue paint lines run east and south from this position. Found a metal location poster overgrown in an 18" sugar S23W, facing the pipe. The quarter corner to west was monumented by others at the proportionate position using this monument for control. I accept the pipe as the best available evidence of the position of the original corner. Left the monument in place and made witnesses as described below.

C. Description of monument for corner and accessories established to perpetuate locating the position of the corner:

(C9) Reset 2.5"OD iron pipe in rock mound 3.5 ft. dia. x 2 ft. high. Blazed and scribed the following: 6" Oak S16E 25.5' 12" Cedar S17W 31.8' 11" Hemlock S72W 19.8' 6" Hemlock N07W 30.0' Bearings are magnetic. Distances are to notch in lower blaze. The Cedar has old squared faces pointing to the monument.	(E7) Found 1" ID iron pipe. Blazed and scribed the following: 8" Sugar S75E 20.9' 18" Sugar S23W 21.8' 14" Hemlock S61W 26.7' 15" Hemlock N19W 50.3' Bearings are magnetic. Distances are to notch in lower blaze.
---	---



Signed by Stephan J. Szyszkoski
 Surveyor's Michigan License No. 33986

Date 6/12/02