

**LAND CORNER RECORDATION CERTIFICATE**  
**Filing Requirement of Act 74, Mich. P.A. 1970**

For corners in

Marquette

(County)

Located In:

Corner Code #

1. Public Land Survey	T <u>52N</u> R <u>29W</u>	<u>07</u>
	T <u>    </u> R <u>    </u>	<u>    </u>
	T <u>    </u> R <u>    </u>	<u>    </u>
	T <u>    </u> R <u>    </u>	<u>    </u>
2. Property Controlling in Section	S <u>17</u> T <u>52N</u> R <u>29W</u>	<u>15</u>
	S <u>    </u> T <u>    </u> R <u>    </u>	<u>    </u>
3. Miscellaneous Property in Sec.	S <u>    </u> T <u>    </u> R <u>    </u>	<u>    </u>
	S <u>    </u> T <u>    </u> R <u>    </u>	<u>    </u>

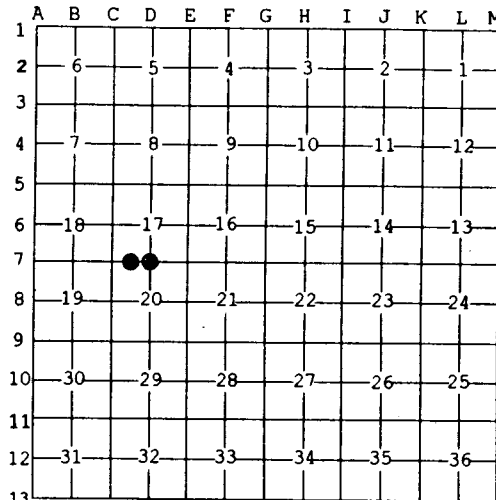
Register of Deeds Stamp & File Number

4. Lot No. \_\_\_\_\_, Recorded Plat \_\_\_\_\_  
 5. Private Claims \_\_\_\_\_

Jun 04 2002

I, Stephan J. Szyszkoski, in a field survey on \_\_\_\_\_, 20\_\_ do hereby state that under requirements of P.A. 74, Michigan P.A. of 1970, the corner points mentioned in lines 1 and 2 above were in conformance with regulations and rules therefore as required in the current manual of survey instructions of the United States Department of the Interior, Bureau of Land Management or by a decree of a Court of Law and /or that the corner points mentioned in lines 3, 4 and 5 above were in conformance with the rules of the Michigan Board of Land Surveyors or by a Decree of a Court of Law; established, re-established, monumented, recovered, found as expressed below:

**NOTE: Not more than 2 corners, all in the same town and range, may be recorded on this certificate.**



**A. Description of original monument and accessories and/or subsequent restoration:**

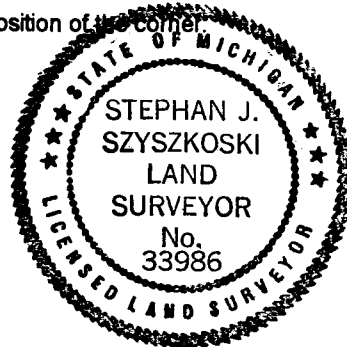
- (07) Quarter corner common to Sections 17 and 20. 1846: Established by Hubbard and Ives. W. corrected between Sec. 17 & 20...40.14 Set 1/4 Sect. post. Sugar 12 S20E 35, Sugar 6 N03W 08...80.28 Section corner.
- (15-Sec. 17) West 1/16 corner between Sections 17 and 20. Not established in the original survey.

**B. Description of corner evidence found and/or method applied in restoring or reestablishing corner:**

- (07) The original post and accessories were not recovered. Found a 5/8" dia. rebar capped with plastic cap #27464 (Glenn C. Van Neste) in accord with a position proportionate to the original record. Accepted same as a careful and faithful reestablishment of the position of the corner. Left the monument in place and made witnesses as described below.
- (15-Sec. 17) Established the corner midway and on a line of mean true bearing between Section corner 1323.79' west and Quarter corner 1323.79' east.

**C. Description of monument for corner and accessories established to perpetuate locating the position of the corner:**

- |  |   |
|--|---|
| (07) Found 5/8" dia. rebar with cap #27464. Blazed and scribed:<br>15" Hemlock N07E 17.6' "1/4S NBT"<br>11" Hemlock N62E 10.6' do<br>11" Sugar S05E 21.2' do<br>11" Sugar N66W 12.0' do<br>Bearings are magnetic. Distances to notch in lower blaze. | (15) Set a 3/4"x6" deep drill hole in granite bedrock into which grouted a 1/2"x8" rebar over which grouted a 1"IDx12" I.pipe with 4" alum. MDNR cap. Blazed and scribed the following:<br>7" W.Pine S46E 24.4' "1/16S BT"<br>4" R.Oak S47W 22' do<br>21" W.Pine S82W 23.6' do<br>10" W.Pine N42W 33.2' do<br>Bearings are magnetic. Distances to notch in lower blaze. |
|--|---|



Signed by Stephan J. Szyszkoski  
 Surveyor's Michigan License No. 33986

Date 6/12/02