

RECORDATION

1993

COMMISSION

Approved by Menominee County
Land Survey Remonumentation
Peer Group Under Act 345 Of

P.A. Of 1990 On 12/13, 1992

LAND CORNER RECORDATION CERTIFICATE
Filing Requirement of Act 74, Mich. P.A. 1970

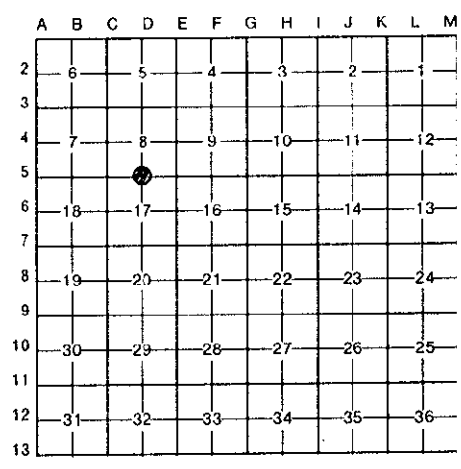
For corners in

<u>MENOMINEE</u> (County)	Located In:	Corner Code #
1. Public Land Survey	T <u>32N</u> R <u>27W</u>	<u>D-5</u>
	T _____ R _____	_____
	T _____ R _____	_____
	T _____ R _____	_____
2. Property Controlling in Section	S _____ T _____ R _____	_____
	S _____ T _____ R _____	_____
3. Miscellaneous Property in Sec.	S _____ T _____ R _____	_____
	S _____ T _____ R _____	_____
4. Lot No. _____, Recorded Plat _____		
5. Private Claims _____		

RECEIVED FOR RECORD
 3 DEC 29 PM 3:54
 Chairman
 PAGE # 27 OF 4
 BARBARA MORRISON
 REGISTER OF DEEDS
 MENOMINEE, MI 49856

Register of Deeds Stamp & File Number

I, William Lenca, in a field survey on November, 1993, do hereby certify that under requirements of P.A. 74, Michigan P.A. of 1970, the corner points mentioned in lines 1 and 2 above were in conformance with regulations and rules therefore as required in the current manual of survey instructions of the United States Department of the Interior, Bureau of Land Management or by a decree of a Court of Law and/or that the corner points mentioned in lines 3, 4 and 5 above were in conformance with the rules of the Michigan Board of Land Surveyors or by a Decree of a Court of Law; established, re-established, monumented, re-monumented, recovered, found as expressed below:



NOTE: Not more than 4 corners, all in the same town and range, may be recorded on this certificate.

A. Description of original monument and accessories and/or subsequent restoration:
 ORIGINAL B.T.'s: Black Ash, 10", S27°W, 11 lks
 Black Ash, 10", N14°W, 21 lks

Original Survey by James H. Mullett in 1848. All original evidence for this corner has been destroyed by farming activities and drainage ditch construction.

PERPETUATION: Albert Haas, County Surveyor, in a 1900 survey states that he "set 4" Cedar Post equidistant between Section Corners." This survey is on record in "County Surveyors Record" Book on page 16 of the Menominee County Records. LCRC No. 208, Book 1 recorded by George B. Wilson in Feb., 1980. Certified Survey No. 204 by George B. Wilson shows subd. of Sec. 8, 32/27, indicating the location of corner D-5

B. Description of corner evidence found and/or method applied in restoring or reestablishing corner:

LCRC No. 208, Book 1 indicates that a 4" square concrete monument, 36" long was set on the North side of a drainage ditch by single proportionate method in 1980. No monument was found in this location. The corner was re-established by single proportionate method and falls in the water on the North side of a drainage ditch and in line with a drainage ditch and occupation running south from this location. This corner position is accepted as a careful and faithful perpetuation of the position of the original corner.

C. Description of monument for corner and accessories established to perpetuate locating the position of the corner:

Set Berntsen Aluminum F130 Drive in Cone Monument stamped for corner:

9" dia. White Ash	N50°W	41.51 feet
6" dia. Ironwood	N58°E	32.04 feet
12" dia. Maple	S31°E	61.45 feet
10" dia. W. Ash	S27°W	45.85 feet
Metal Survey Sign Post	North	3.5 feet



NOTE: All bearings are magnetic bearings; distances are measured with steel tape. distances to trees are measured to nail in side of tree.

Signed by William Lenca Date December 13, 1993
 Surveyor's Michigan License No. 26461