

RECORDATION

1993

COMMISSION

LAND CORNER RECORDATION CERTIFICATE
Filing Requirement of Act 74, Mich. P.A. 1970

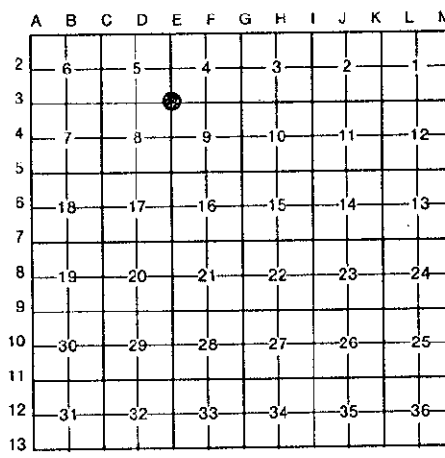
Approved by Menominee County
Land Survey Remonumentation
Peer Group Under Act 345 Of
P.A. Of 1990 On 12/29 1993
M. D. Davis
Chairman

For corners in

Table with columns: MENOMINEE (County), Located In: (Town, Range, Section), Corner Code #. Includes entries for Public Land Survey, Property Controlling in Section, Miscellaneous Property in Sec., Lot No., and Private Claims.

RECEIVED FOR RECORD
93 DEC 29 PM 3:53
PAGE # 20
BARBARA MORRISON
REGISTER OF DEEDS
MENOMINEE, MI 49858
Register of Deeds Stamp & File Number

I, William Lenca, in a field survey on September, 1993, do hereby certify that under requirements of P.A. 74, Michigan P.A. of 1970, the corner points mentioned in lines 1 and 2 above were in conformance with regulations and rules therefore as required in the current manual of survey instructions of the United States Department of the Interior, Bureau of Land Management or by a decree of a Court of Law and/or that the corner points mentioned in lines 3, 4 and 5 above were in conformance with the rules of the Michigan Board of Land Surveyors or by a Decree of a Court of Law; established, re-established, monumented, re-monumented, recovered, found as expressed below:



NOTE: Not more than 4 corners, all in the same town and range, may be recorded on this certificate.

A. Description of original monument and accessories and/or subsequent restoration:
ORIGINAL B.T.'s: Hemlock, 10", N55°E, 06 lks
Hemlock, 16", S3 1/2°W, 17 lks

Original Survey by James H. Mullett in 1848. All original evidence for this corner has been destroyed by county road improvements.

PERPETUATION: George B. Wilson (RLS 17607) in Jan. 1981 - Certified Survey No. 204 shows a subdivision of Section 8, T32N-R27W, indicating the location of Corner E-3.

B. Description of corner evidence found and/or method applied in restoring or reestablishing corner:
Found 1/2" diameter iron in position matching distances shown in Certified Survey No. 204. This corner falls in the centerline of an East-West gravel road and in line with an old fence line running North from this location. This position has been used by local surveyors as the corner and is accepted as the best available evidence of the location of the original corner.

C. Description of monument for corner and accessories established to perpetuate locating the position of the corner:

- Set Berntsen A1NBF30 Monument stamped for corner:
9" dia. White Ash N67°E 64.51 feet
7" dia. White Ash S24°E 46.75 feet
5" dia. Tamarack S36°W 56.57 feet
8" dia. White Ash North 41.41 feet
Metal Survey Sign Post S07°W 34.3 feet



NOTE: All bearings are magnetic bearings; distances are measured with steel tape. Distances to trees are measured to nail in side of tree.

Signed by William Lenca Date December 10, 1993
Surveyor's Michigan License No. 26461