

COMMISSION

LAND CORNER RECORDATION CERTIFICATE
Filing Requirement of Act 74, Mich. P.A. 1970

For corners in

MENOMINEE
(County)

Located In:

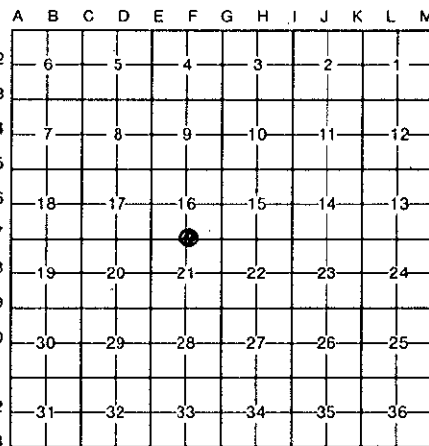
Corner Code ==#

1. Public Land Survey	T <u>32N</u>	R <u>27W</u>	<u>F-7</u>
	T	R	
	T	R	
	T	R	
2. Property Controlling in Section	S	T	R
	S	T	R
3. Miscellaneous Property in Sec.	S	T	R
	S	T	R

RECEIVED FOR RECORD
93 DEC 29 PM 3:50
PAGE # 8 24
BARBARA MORRISON
REGISTER OF DEEDS
MENOMINEE, MI 49858

Register of Deeds Stamp & File Number

- 4. Lot No. _____, Recorded Plat _____
- 5. Private Claims _____



I, William Lenca, in a field survey on November, 19 93, do hereby certify that under requirements of P.A. 74, Michigan P.A. of 1970, the corner points mentioned in lines 1 and 2 above were in conformance with regulations and rules therefore as required in the current manual of survey instructions of the United States Department of the Interior, Bureau of Land Management or by a decree of a Court of Law and/or that the corner points mentioned in lines 3, 4 and 5 above were in conformance with the rules of the Michigan Board of Land Surveyors or by a Decree of a Court of Law; established, re-established, monumented, re-monumented, recovered, found as expressed below:

NOTE: Not more than 4 corners, all in the same town and range, may be recorded on this certificate.

A. Description of original monument and accessories and/or subsequent restoration:

ORIGINAL B.T.'s: Tamarack, 10", S65°E, 05 lks
Tamarack, 8", N51°E, 12 lks

Original Survey by James H. Mullett in 1848. No original evidence of corner found.

PERPETUATION: Certified Survey No. 269 by George B. Wilson (RLS No. 17607) shows the location of this corner as it relates to other corners in section 16. LCRC No. 378, Book 2, recorded by George B. Wilson, RLS No. 17607 in Mar. 1982.

B. Description of corner evidence found and/or method applied in restoring or reestablishing corner:

Found 5/8" dia. Alum. Rod/3/4" dia. Alum. cap in the location indicated by information contained in Certified Survey No. 269. This corner is also shown in an unrecorded survey map dated 1/12/74 by George B. Wilson, indicating that the East-West position of the corner was established by GLO Terrain calls to a swamp edge 2 chains West and the foot of a hill 1.25 chains West. The North-South position of the corner falls in line with the remnants of an old fence line running West from this location. This position has been used in several surveys over the past 20 years, and is accepted as the best available evidence of the position of the original corner.

C. Description of monument for corner and accessories established to perpetuate locating the position of the corner:

Found 5/8" dia. Alum. Rod 5' long/3/4" dia. Alum. cap stamped for corner:

6" dia. Jack Pine	N15°E	28.78 feet
8" dia. Norway Pine	East	51.09 feet
9" dia. Norway Pine	S35°E	40.30 feet
5" dia. Jack Pine	N50°W	29.25 feet
Metal Survey Sign Post	N10°E	1.0 feet



NOTE: All bearings are magnetic bearings; distances are measured with steel tape.
distances to trees are measured to nail in side of tree.

Signed by William Lenca Date December 13, 1993
Surveyor's Michigan License No. 26461