

SURVEY & REMONUMENTATION

LAND CORNER RECORDATION CERTIFICATE Filing Requirement of Act 74, Mich. P.A. 1970

Approved by Menominee County
Land Survey Remonumentation
Four Group Under Act 345 Of
P.A. Of 1990 On Dec 16, 1994

For corners in

APR 11 1995

MENOMINEE
(County)

COMMISSION located in:

Corner Code #

| | | | | | | |
|------------------------------------|---|------------|---|------------|---|-------------|
| 1. Public Land Survey | T | <u>32N</u> | R | <u>27W</u> | | <u>J-09</u> |
| | T | | R | | | |
| | T | | R | | | |
| | T | | R | | | |
| 2. Property Controlling in Section | S | | T | | R | |
| | S | | T | | R | |
| 3. Miscellaneous Property in Sec. | S | | T | | R | |
| | S | | T | | R | |

Mr. Davis RLS
ACTING Chairman
BARBARA MORRISON
REGISTER OF DEEDS
MENOMINEE, MI 49858

DEC 27 AM 10:47
RECEIVED FOR RECORD

Register of Deeds Stamp & File Number

4. Lot No. _____, Recorded Plat _____
5. Private Claims _____

| | | | | | | | | | | | | | |
|----|----|----|----|----|----|----|---|---|---|---|---|---|---|
| | A | B | C | D | E | F | G | H | I | J | K | L | M |
| 2 | 6 | 5 | 4 | 3 | 2 | 1 | | | | | | | |
| 3 | | | | | | | | | | | | | |
| 4 | 7 | 8 | 9 | 10 | 11 | 12 | | | | | | | |
| 5 | | | | | | | | | | | | | |
| 6 | 18 | 17 | 16 | 15 | 14 | 13 | | | | | | | |
| 7 | | | | | | | | | | | | | |
| 8 | 19 | 20 | 21 | 22 | 23 | 24 | | | | | | | |
| 9 | | | | | | | | | | | | | |
| 10 | 30 | 29 | 28 | 27 | 26 | 25 | | | | | | | |
| 11 | | | | | | | | | | | | | |
| 12 | 31 | 32 | 33 | 34 | 35 | 36 | | | | | | | |
| 13 | | | | | | | | | | | | | |

William Lenca

May 05 94

I, William Lenca, in a field survey on _____, 19____, do hereby certify that under requirements of P.A. 74, Michigan P.A. of 1970, the corner points mentioned in lines 1 and 2 above were in conformance with regulations and rules therefore as required in the current manual of survey instructions of the United States Department of the Interior, Bureau of Land Management or by a decree of a Court of Law and/or that the corner points mentioned in lines 3, 4 and 5 above were in conformance with the rules of the Michigan Board of Land Surveyors or by a Decree of a Court of Law, established, re-established, monumented, re-monumented, recovered, found as expressed below:

NOTE: Not more than 4 corners, all in the same town and range, may be recorded on this certificate.

A. Description of original monument and accessories and/or subsequent restoration:

- 1847: Original Survey by James H. Mullett - B.T.'s - Black Ash, 3", N78°E, 22 lks; B. Ash, 3", S51°W, 14 lks. All original evidence for this corner has been destroyed by City Utilities and Street improvements.
- 1958: Plat of Survey by Robert Olsen, surveyor, states that this corner is a 1" iron pipe. The survey shows distances along the N-S 1/4 Line to several lot corners.
- 1976: Certified Survey No. 66 by George B. Wilson, RLS No. 17607, shows this corner as it relates to other lot corners in the survey and show a distance to the SW Section Corner 1/2 mile West. The corner is described as a concrete monument.

B. Description of corner evidence found and/or method applied in restoring or reestablishing corner:

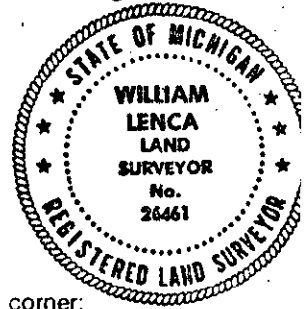
We found a 4 inch square concrete monument with a 5/8 inch diameter iron pin in the center. This position checks with distance and alignment to corners shown in Robert Olsen's 1958 Plat of Survey. It also matches with Wilson's measurement to the SW Section Corner, 1/2 mile West, as shown in Certified Survey No. 66. This position has been accepted by local surveyors and used in a large number of surveys over the past 36 years, and is accepted as the best available evidence of the position of the original corner.

C. Description of monument for corner and accessories established to perpetuate locating the position of the corner:

Set 3-1/4" dia. Alum. Cap stamped for corner location on existing concrete monument:

| | | | |
|--|-------|------------|----------------|
| 5/8" x 24" Iron Rod/2" Alum. cap marked WITNESS MARKER | N58°E | 37.08 feet | @ 14" dia. Ash |
| 5/8" x 24" Iron Rod/2" Alum. cap marked WITNESS MARKER | S36°E | 51.55 feet | @ 5" dia. Elm |
| 5/8" x 24" Iron Rod/2" Alum. cap marked WITNESS MARKER | S05°E | 14.17 feet | @ Survey Sign |
| 5/8" x 24" Iron Rod/2" Alum. cap marked WITNESS MARKER | N57°W | 66.59 feet | @ 14" dia. Ash |
| Survey Sign Post | S05°E | 14.4 feet | |

NOTE: All bearings are magnetic bearings. All distances are measured with steel tape. Distances to trees are to nail in side of tree.



Signed by William Lenca Date Dec. 15, 1994

Surveyor's Michigan License No. 26461