

# SURVEY & REMONUMENTATION

OCT 26 1993

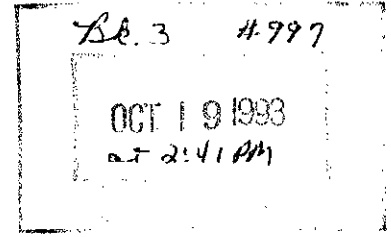
COMMISSION

## LAND CORNER RECORDATION CERTIFICATE Filing Requirement of Act 74, Mich. P.A. 1970

Approved by Menominee County  
Land Survey Remonumentation  
Peer Group Under Act 345 Of  
P.A. Of 1990 On OCT 6, 1993  
Mr. Davis RLS  
Chairman (ACTING)

For corners in

<u>MENOMINEE</u> <small>(County)</small>	Located In:	Corner Code #:
1. Public Land Survey	T <u>32N</u> R <u>27W</u>	<u>K-2</u>
	T _____ R _____	_____
	T _____ R _____	_____
	T _____ R _____	_____
2. Property Controlling in Section	S _____ T _____ R _____	_____
	S _____ T _____ R _____	_____
3. Miscellaneous Property in Sec.	S _____ T _____ R _____	_____
	S _____ T _____ R _____	_____



Register of Deeds Stamp & File Number

4. Lot No. \_\_\_\_\_, Recorded Plat \_\_\_\_\_  
5. Private Claims \_\_\_\_\_

I, William Lenca, in a field survey on July, 1993, do hereby certify that under requirements of P.A. 74, Michigan P.A. of 1970, the corner points mentioned in lines 1 and 2 above were in conformance with regulations and rules therefore as required in the current manual of survey instructions of the United States Department of the Interior, Bureau of Land Management or by a decree of a Court of Law and/or that the corner points mentioned in lines 3, 4 and 5 above were in conformance with the rules of the Michigan Board of Land Surveyors or by a Decree of a Court of Law; established, re-established, monumented, re-monumented, recovered, found as expressed below:

**NOTE: Not more than 4 corners, all in the same town and range, may be recorded on this certificate.**

	A	B	C	D	E	F	G	H	I	J	K	L	M
2	6	5	4	3	2	1							
3													
4	7	8	9	10	11	12							
5													
6	18	17	16	15	14	13							
7													
8	19	20	21	22	23	24							
9													
10	30	29	28	27	26	25							
11													
12	31	32	33	34	35	36							
13													

A. Description of original monument and accessories and/or subsequent restoration:

**ORIGINAL B.T.'s:**

- Hemlock, 10", dia at corner location
- Hemlock, 10", S87°W, 09 lks

Original Survey by James H. Mullett in 1848.

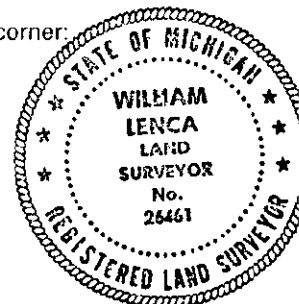
B. Description of corner evidence found and/or method applied in restoring or reestablishing corner:

Found 1½" dia. x 24" Iron Pipe at old fence corner. The corner fits closely with a proportional position between the Section Corner to the North and South. This corner location has been used for control in several surveys, and is accepted as the best available evidence of the position of the original corner.

C. Description of monument for corner and accessories established to perpetuate locating the position of the corner:

Set 2½" x 30" Alum. drivable monument/3½" dia. cap stamped for corner:

7" dia. White Pine	N40°E	30.04 feet
10" dia. Maple	S62°E	16.36 feet
7" dia. Maple	S18°W	28.42 feet
10" dia. Maple	N26°W	16.80 feet
Steel Sign Post	North	0.5 feet



**NOTE:** All bearings are magnetic bearings; all distances are measured with steel tape; distances to trees are to nail in center of tree.

Signed by William Lenca Date Sept. 20, 1993

Surveyor's Michigan License No. 26461