

**SURVEY &
REMONUMENTATION**

OCT 26 1993

COMMISSION

Approved by Menominee County
Land Survey Remonumentation
Peer Group Under Act 345 Of

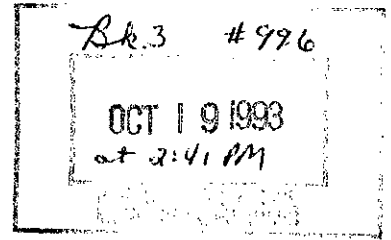
P.A. Of 1990 On OCT 6 1993

Mc Davis RLS
Chairman (ACTING)

LAND CORNER RECORDATION CERTIFICATE
Filing Requirement of Act 74, Mich. P.A. 1970

For corners in

<u>MENOMINEE</u> (County)	Located In:	Corner Code #/
1. Public Land Survey	T <u>32N</u> R <u>27W</u>	<u>L-3</u>
	T _____ R _____	_____
	T _____ R _____	_____
	T _____ R _____	_____
2. Property Controlling in Section	S _____ T _____ R _____	_____
	S _____ T _____ R _____	_____
3. Miscellaneous Property in Sec.	S _____ T _____ R _____	_____
	S _____ T _____ R _____	_____
4. Lot No. _____, Recorded Plat _____		
5. Private Claims _____		



Register of Deeds Stamp & File Number

I, William Lenca, in a field survey on July, 1993, do hereby certify that under requirements of P.A. 74, Michigan P.A. of 1970, the corner points mentioned in lines 1 and 2 above were in conformance with regulations and rules therefore as required in the current manual of survey instructions of the United States Department of the Interior, Bureau of Land Management or by a decree of a Court of Law and/or that the corner points mentioned in lines 3, 4 and 5 above were in conformance with the rules of the Michigan Board of Land Surveyors or by a Decree of a Court of Law; established, re-established, monumented, re-monumented, recovered, found as expressed below:

NOTE: Not more than 4 corners, all in the same town and range, may be recorded on this certificate.

	A	B	C	D	E	F	G	H	I	J	K	L	M
2	6		5		4		3		2		1		
3													
4	7		8		9		10		11		12		
5													
6	13		17		16		15		14		13		
7													
8	19		20		21		22		23		24		
9													
10	30		29		28		27		26		25		
11													
12	31		32		33		34		35		36		
13													

A. Description of original monument and accessories and/or subsequent restoration:

ORIGINAL B.T.'s:

- Hemlock, 10", S18°W, 15 lks
- Birch, 10", S60°W, 15 lks

Original Survey by James H. Mullett in 1848. All original evidence for this corner has been destroyed by county road improvements.

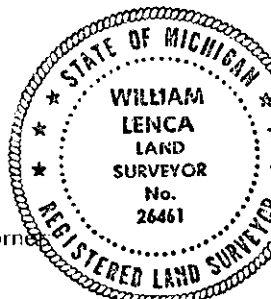
B. Description of corner evidence found and/or method applied in restoring or reestablishing corner:

The corner was established in centerline of county roads East-West and North, and in line with an old fence running South from corner location. A 3/4" x 18" Iron Pipe was set at this location by William Lenca in a 1981 survey and recorded in Corner Records in Book No. 1 on page 304. This corner position has been used for control in several surveys and is accepted as the best available evidence of the position of the original corner.

C. Description of monument for corner and accessories established to perpetuate locating the position of the corner:

Set 5/8" x 24" Iron Rod/3 1/4" Alum. cap stamped for corner in Monument Box:

5/8" x 24" Iron Rod/2" Alum. cap	-	N45°E	46.54 feet
10" dia. Hemlock	-	S37°E	65.06 feet
5/8" x 24" Iron Rod/2" Alum. cap	-	South	33.00 feet
12" dia. Cedar	-	N29°W	69.41 feet



NOTE: All bearings are magnetic bearings; distances are measured with steel tape; distances to trees are to nail in center of tree.

Signed by William Lenca Date Sept. 10, 1993
Surveyor's Michigan License No. 26461