

SURVEY & REMONUMENTATION

JUN 23 1994

COMMISSION

Approved by Menominee County
Local Survey Remonumentation
Peer Group Under Act 345 of

P.A. of 1990 On 5/18 1994

LAND CORNER RECORDATION CERTIFICATE

Filing Requirement of Act 74, Mich. P.A. 1970

For corners in
MENOMINEE

(County)

Located In:

Corner Code =#

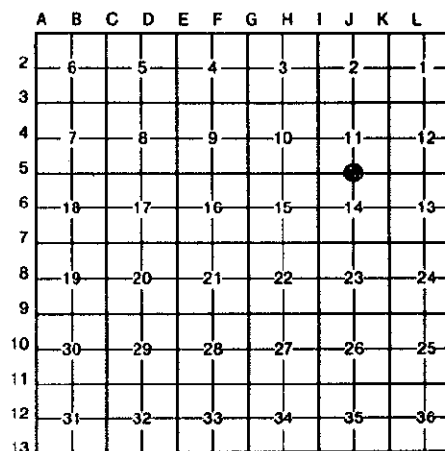
1. Public Land Survey	T <u>32N</u> R <u>28W</u>	J-5	
	T _____ R _____		
	T _____ R _____		
	T _____ R _____		
2. Property Controlling in Section	S _____ T _____ R _____		
	S _____ T _____ R _____		
3. Miscellaneous Property in Sec.	S _____ T _____ R _____		
	S _____ T _____ R _____		

4. Lot No. _____, Recorded Plat _____
5. Private Claims _____

RECEIVED FOR RECORD
 94 MAY 20 PM 3:31
 BARBARA MORRISON
 REGISTER OF DEEDS
 MENOMINEE MI 498258
 Clerk

Register of Deeds Stamp & File Number

I, William Lenca, in a field survey on Feb. 22, 1994, do hereby certify that under requirements of P.A. 74, Michigan P.A. of 1970, the corner points mentioned in lines 1 and 2 above were in conformance with regulations and rules therefore as required in the current manual of survey instructions of the United States Department of the Interior, Bureau of Land Management or by a decree of a Court of Law and/or that the corner points mentioned in lines 3, 4 and 5 above were in conformance with the rules of the Michigan Board of Land Surveyors or by a Decree of a Court of Law; established, re-established, monumented, re-monumented, recovered, found as expressed below:



NOTE: Not more than 4 corners, all in the same town and range, may be recorded on this certificate.

A. Description of original monument and accessories and/or subsequent restoration:

ORIGINAL B.T.'s: Hemlock, 12", S05°W, 28 lks
Beech, 12", N61°W, 50 lks

Original Survey by James H. Mullett in 1848. No original evidence found.

PERPETUATION: Nov. 1977 - Certified Survey No. 108 recorded by George B. Wilson, RLS No. 17607, indicates that a 4" square concrete monument was set at this corner. Dec. 1982 - Certified Survey No. 330 indicates that this corner was set based on GLO ties to a W. Pine stump 782 feet West (GLO dist) and a swamp call 330' East and on the extension of the line between the Pine stump and an existing iron pipe on the bank of the Menominee River.

B. Description of corner evidence found and/or method applied in restoring or reestablishing corner:

Found a 4 inch square concrete monument in location indicated by information in Certified Survey No.'s 108 and 330 by George B. Wilson, RLS No. 17607. Certified Survey No. 330 indicates that this monument was set on line with an existing iron pipe on the bank of the Menominee River and a White Pine stump (GLO Line Tree), and at the record GLO distance between the line tree to the West and a GLO call to a swamp edge to the East. This corner is accepted as a careful and faithful perpetuation of the position of the original corner.



C. Description of monument for corner and accessories established to perpetuate locating the position of the corner.
Accepted existing 4" square concrete monument - set 3-1/4" diameter Aluminum cap stamped for corner on monument:

7" dia. Oak	Scr NBT	S70°E	17.41 feet
6" dia. Oak	" "	S30°W	21.05 feet
8" dia. Oak	" "	N85°W	34.44 feet
7" dia. Oak	" "	N21°E	13.36 feet
Survey Sign Post		N90°E	1.4 feet

NOTE: All bearings are magnetic bearings. All distances are measured with steel tape. Distances to trees are to nail in side of tree.

Signed by William Lenca Date April 16, 1994
Surveyor's Michigan License No. 26461