

SURVEY & REMONUMENTATION

JUN 23 1994

LAND CORNER RECORDATION CERTIFICATE Filing Requirement of Act 74, Mich. P.A. 1970

Approved by Menominee County
Land Survey Remonumentation
Peer Group Under Act 345 Of

P.A. Of 1990 On 5/18 199 4

Mr. Dowd
Chairman

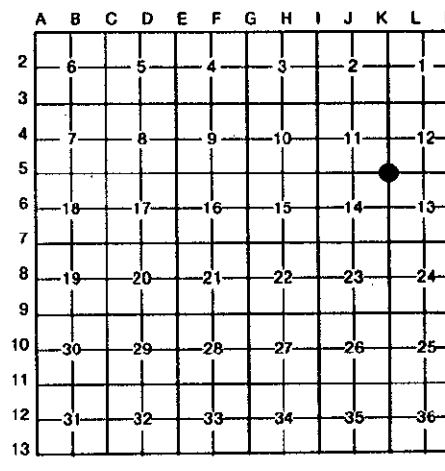
For corners in COMMISSION
MENOMINEE

	Located In:	Corner Code #
1. Public Land Survey	T <u>32N</u> R <u>28W</u>	<u>K-5</u>
	T _____ R _____	_____
	T _____ R _____	_____
	T _____ R _____	_____
2. Property Controlling in Section	S _____ T _____ R _____	_____
	S _____ T _____ R _____	_____
3. Miscellaneous Property in Sec.	S _____ T _____ R _____	_____
	S _____ T _____ R _____	_____

RECEIVED FOR RECORD
 94 MAY 20 PM 3:30
 PAGE # 55 AR 4
 BARBARA MORRISON
 REGISTER OF DEEDS
 MENOMINEE, MI 49958
 Register of Deeds Stamp & File Number

4. Lot No. _____, Recorded Plat _____
 5. Private Claims _____

I, William Lenca, in a field survey on Feb. 14, 19 94, do hereby certify that under requirements of P.A. 74, Michigan P.A. of 1970, the corner points mentioned in lines 1 and 2 above were in conformance with regulations and rules therefore as required in the current manual of survey instructions of the United States Department of the Interior, Bureau of Land Management or by a decree of a Court of Law and/or that the corner points mentioned in lines 3, 4 and 5 above were in conformance with the rules of the Michigan Board of Land Surveyors or by a Decree of a Court of Law; established, re-established, monumented, re-monumented, recovered, found as expressed below:



NOTE: Not more than 4 corners, all in the same town and range, may be recorded on this certificate.

A. Description of original monument and accessories and/or subsequent restoration:

- 1848 - Original Survey by James H. Mullett - B.T.'s - Hemlock, 10", S88°W, 28 lks ; W. Pine, 24" S46°E, 16 lks. All original evidence for this corner has been destroyed by clearing and farming activities.
- 1960 - Plat of Survey by Robert Olsen, RLS No. 10700, shows a tie to this corner from the 1/4 corner to the south. He does not describe the corner monument.
- 1982 - LCRC No. 370 recorded by George B. Wilson, RLS No. 17607, states that he set a HDR 1 Monument (described in part "B") at the corner location as evidenced by Olsen's survey and by an old North-South fence.

B. Description of corner evidence found and/or method applied in restoring or reestablishing corner:

Found 3/4" diameter Aluminum Rod 5 feet long/3-1/4" diameter Aluminum cap as indicated in LCRC No. 370. Corner position falls on an old fence line running North-South. This corner has been used as control in several surveys over the past 34 years, and is accepted as the best available evidence of the position of the original corner.



C. Description of monument for corner and accessories established to perpetuate locating the position of the corner:

Found 3/4" diameter Aluminum Rod 5 feet long/3-1/4" diameter Aluminum cap - stamped for corner:

5" dia. Maple	Scr NBT	N03°E	6.80 feet
6" dia. W. Pine	" "	S46°E	46.71 feet
5" dia. Maple	" "	S32°W	25.54 feet
8" dia. Oak	" "	N90°W	21.63 feet
Survey Sign Post		S65°W	1.8 feet

NOTE: All bearings are magnetic bearings. All distances are measured with steel tape. Distances to trees are to nail in side of tree.

Signed by William Lenca Date April 16, 1994
 Surveyor's Michigan License No. 26461

55