

**SURVEY &
REMONUMENTATION**

JAN 09 2001

JAN 09 2001

SECTION

LAND CORNER RECORDATION CERTIFICATE
Filing Requirement of Act 74, Mich. P.A. 1970

Approved by Menominee County
Land Survey Remonumentation
Peer Group Under Act 345 of
P.A. Of 1990 On 12/22, 2000
William Lenca
Chairman

For corners in

MENOMINEE
(County)

Located In: Corner Code #

- | | | | | | | |
|---------------------------------------|---|----|---|----|---|-----|
| 1. Public Land Survey | T | 33 | R | 26 | W | C-5 |
| | T | | R | | | |
| | T | | R | | | |
| | T | | R | | | |
| 2. Property Controlling
in Section | S | | T | | R | |
| | S | | T | | R | |
| 3. Miscellaneous
Property in Sec. | S | | T | | R | |
| | S | | T | | R | |

Book 6 Pg. 195

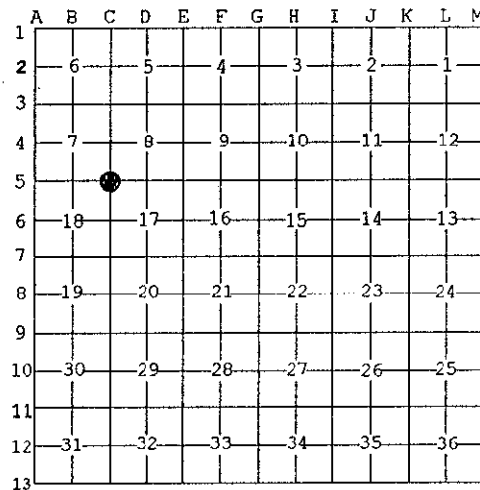
RECEIVED FOR RECORD
28 DEC 2000 2:31:31 PM
BARBARA MORRISON
REGISTER OF DEEDS
MENOMINEE, MI 49859

Register of Deeds Stamp & File Number

4. Lot No. _____, Recorded Plat _____
5. Private Claims _____

I, William Lenca, in a field survey on Dec., 19 00 do hereby state that under requirements of P.A. 74, Michigan P.A. of 1970, the corner points mentioned in lines 1 and 2 above were in conformance with regulations and rules therefore as required in the current manual of survey instructions of the United States Department of the Interior, Bureau of Land Management or by a decree of a Court of Law and /or that the corner points mentioned in lines 3, 4 and 5 above were in conformance with the rules of the Michigan Board of Land Surveyors or by a Decree of a Court of Law; established, re-established, monumented, recovered, found as expressed below:

NOTE: Not more than 2 corners, all in the same town and range, may be recorded on this certificate.



A. Description of original monument and accessories and/or subsequent restoration:

- 1848: Original Survey by James H. Mullett - B.T.'s - Cedar, 15" - S03°E - 18 lks.; Cedar, 10" - N76°E - 19 lks.; All original evidence for this corner has been destroyed by County Road improvements.
- 1901: Section Subdivision by Albert Haas, County Surveyor, states 4" Cedar Post formerly set from Government Bearing Trees.
- 1971: Survey by George Wilson, RLS 17607, shows a concrete monument set by Sing. Prop. btwn Cor. C-3 & C-6.
- 1987: L.C.R.C. No. 772 (Book 3) by William Lenca, RLS No. 26461, states "Reset corner from remaining evidence of a 1901 survey recorded on page 64 of RECORD OF SURVEYS Book on file in the office of Menominee Co. Reg. of Deeds. The ex. fence occupation fits this record very closely. Set 5/8" x 24" Iron/ID cap - TIES: W. Birch, 12" - N16°W - 44.00'; Cedar, 9" - S82°E - 26.09'; W. Birch, 10" - S14°W - 62.09'; W. Birch, 6" - S78°W - 51.34'.

B. Description of corner evidence found and/or method applied in restoring or reestablishing corner:

In the GLO Notes, there are stream calls to a stream 99 feet West, 231 feet West and 199 feet North. The Stream calls would place this corner approximately N18°W, 155 feet from the Haas corner shown in the 1901 survey. All of the old occupation lines in Section 7 and 18 match with Haas's 1901 Record, which also states that this corner was re-set from 2 Government Bearing Trees. There is also a DNR Corner 1/2 mile East of this position which was monumented in 1990 by single proportional measurement, using the Haas Corner location. The 1901 Haas corner is presently monumented as described in L.C.R.C. No. 772, and is accepted as the best available evidence of the position of the original corner.

C. Description of monument for corner and accessories established to perpetuate locating the position of the corner:

Set 5/8" x 24" Iron Rod/3-1/4" dia. Alum. cap stamped for corner location:

10" dia. Cedar (Ex. B.T.)	S82°E	26.09 feet	Scr. NBT
8" dia. Cherry	S13°W	42.91 feet	Scr. NBT
9" dia. White Ash	S60°W	56.58 feet	Scr. NBT
12" dia. White Pine	N17°W	49.69 feet	Scr. NBT
Metal Survey Sign Post	N05°W	22.9 feet	
4" Square Conc. Monument	N04°W	198.25 feet	(Meas. with EDM)

NOTE: All bearings are magnetic bearings. All distances are measured with steel tape. Distances to trees are to nail in side of tree.

Signed by William Lenca
Surveyor's Michigan License No. 26461

Date Dec. 13, 2000

