

SURVEY & REMONUMENTATION

JAN 09 2001

SECTION

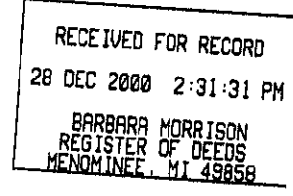
LAND CORNER RECORDATION CERTIFICATE Filing Requirement of Act 74, Mich. P.A. 1970

Approved by Menominee County
Land Survey Remonumentation
Peer Group Under Act 345 of
P.A. Of 1990 On 12/22, 2000
William Lenca
Chairman

For corners in

<u>MENOMINEE</u>	Located In:	Corner Code #	
(County)			
1. Public Land Survey	T <u>33</u> N R <u>26</u> W	<u>D-5</u>	
	T ___ R ___	_____	
	T ___ R ___	_____	
	T ___ R ___	_____	
2. Property Controlling in Section	S ___ T ___ R ___	_____	
	S ___ T ___ R ___	_____	
3. Miscellaneous Property in Sec.	S ___ T ___ R ___	_____	
	S ___ T ___ R ___	_____	

Bl. 6 Pg. 212

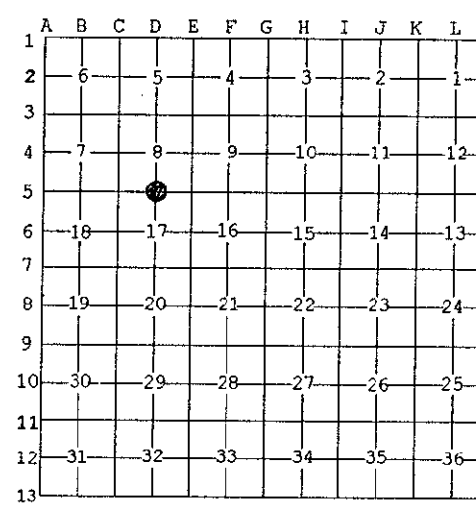


Register of Deeds Stamp & File Number

4. Lot No. _____, Recorded Plat _____
5. Private Claims _____

I, William Lenca, in a field survey on Dec., 190 do hereby state that under requirements of P.A. 74, Michigan P.A. of 1970, the corner points mentioned in lines 1 and 2 above were in conformance with regulations and rules therefore as required in the current manual of survey instructions of the United States Department of the Interior, Bureau of Land Management or by a decree of a Court of Law and /or that the corner points mentioned in lines 3, 4 and 5 above were in conformance with the rules of the Michigan Board of Land Surveyors or by a Decree of a Court of Law; established, re-established, monumented, recovered, found as expressed below:

NOTE: Not more than 2 corners, all in the same town and range, may be recorded on this certificate.



A. Description of original monument and accessories and/or subsequent restoration:

- 1848: Original Survey by James H. Mullett - B.T.'s - White Pine, 12" - S54°W - 11 lks.; Birch, 8" - N25°W - 8 lks.; All original evidence for this corner has been destroyed by years of decay.
- 1990: L.C.R.C. No. 887, Book 3, by Gerald L. Wiggins, RLS No. 23521 states he set a DNR monument by way of: "Corner set M.P.O.L. between southwest corner and southeast corner of Section 8. A 4" concrete monument bears North 97.75'. Could not find any record of who set this monument". TIES: 6" Maple, N28°E, 30.8'; 5" Maple, S51°E, 18.1'; 5" Maple, S48°W, 37.15'; 8" Maple, N46°W, 43.45'.

B. Description of corner evidence found and/or method applied in restoring or reestablishing corner:

We found a DNR monument and 4 B.T.'s in place per L.C.R.C. No. 887 (see part A above). The monument fits measurements well for being placed M.P.O.L., and is accepted as a careful and faithful reestablishment of the position of the original corner. Also found a concrete monument 97.75' North of this corner. According to information in my records this corner was set by George W. Wilson, RLS 17607, in August, 1971. Wilson placed this concrete monument by single proportional measurement using a different corner position at the NW corner of Section 17. This NW corner position has not been used or accepted by other surveyors.

C. Description of monument for corner and accessories established to perpetuate locating the position of the corner:

Accepted Existing 1" dia. Iron Pipe/4" Alum. Cap stamped for corner location.

8" dia. Maple (Existing B.T. - Set New Nail)	N28°E	30.90 feet	Scr. N.B.T.
8" dia. Maple (Existing B.T. - Set New Nail)	S51°E	18.39 feet	Scr. N.B.T.
8" dia. Maple (Existing B.T. - Set New Nail)	S48°W	37.38 feet	Scr. N.B.T.
10" dia. Maple (Existing B.T. - Set New Nail)	N46°W	43.80 feet	Scr. N.B.T.
Metal Survey Sign Post	North	1.0 feet	



NOTE: All bearings are magnetic bearings. All distances are measured with steel tape. Distances to trees are to nail in side of tree.

Signed by William Lenca
Surveyor's Michigan License No. 26461

Date Dec. 20, 2000

212