

1993

COMMISSION

LAND CORNER RECORDATION CERTIFICATE
Filing Requirement of Act 74, Mich. P.A. 1970

Approved by Menominee County Land Survey Remonumentation Peer Group Under Act 345 Of P.A. Of 1990 On 12/29 1993

For corners in

MENOMINEE (County)

Located In:

Corner Code -#

(C-13) 33/27 C-1

- 1. Public Land Survey T 32N R 27W
2. Property Controlling in Section S T R
3. Miscellaneous Property in Sec. S T R
4. Lot No. Recorded Plat
5. Private Claims

RECEIVED FOR RECORD 93 DEC 29 PM 3:55
PAGE # 41 BARBARA MORRISON REGISTER OF DEEDS MENOMINEE, MI 49858

Register of Deeds Stamp & File Number

Grid table with columns A-M and rows 2-13. A dot is marked in cell C-2.

I, William Lenca, in a field survey on November, 19 93, do hereby certify that under requirements of P.A. 74, Michigan P.A. of 1970, the corner points mentioned in lines 1 and 2 above were in conformance with regulations and rules therefore as required in the current manual of survey instructions of the United States Department of the Interior, Bureau of Land Management or by a decree of a Court of Law and/or that the corner points mentioned in lines 3, 4 and 5 above were in conformance with the rules of the Michigan Board of Land Surveyors or by a Decree of a Court of Law; established, re-established, monumented, re-monumented, recovered, found as expressed below:

NOTE: Not more than 4 corners, all in the same town and range, may be recorded on this certificate.

A. Description of original monument and accessories and/or subsequent restoration:

ORIGINAL B.T.'s: Cedar, 10", N46°E, 16 lks
Spruce, 10", N65°W, 09 lks

Original Survey by James H. Mullett in 1848. All original evidence for this corner has been destroyed by county road improvements.

PERPETUATION: A.L. Hillis in 1893, as recorded in field book No. 11, City Engineer's Office, City of Marinette, Wisconsin.

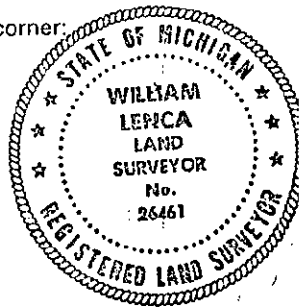
B. Description of corner evidence found and/or method applied in restoring or reestablishing corner:

Found 1 1/2" square iron bar as described by A.L. Hillis on page 20 of field book No. 11, City Engineer's Office, City of Marinette, Wisconsin. This corner falls in line with the centerline of county roads running West and South from this location, and in line with old fences running North and East from this position. This corner was used by George B. Wilson, and is shown and described in Certified Survey No. 49 of the Menominee County Records, and is accepted as a careful and faithful perpetuation of the position of the original corner.

C. Description of monument for corner and accessories established to perpetuate locating the position of the corner:

Set Aluminum Berntsen "A1NBF30" Notched-base Monument stamped for corner:

- 9" dia. Tamarack N73°E 71.79 feet
12" dia. Tamarack S42°E 101.93 feet
6" dia. Tamarack S75°W 171.00 feet
5/8" x 24" Iron Rod/
2" dia. Alum. cap (WITNESS MARKER) N75°W 41.24 feet
Survey Sign Post N15°E 0.7 feet



NOTE: All bearings are magnetic bearings; distances are measured with steel tape. distances to trees are measured to nail in side of tree.

Signed by [Signature] Date December 6, 1993
Surveyor's Michigan License No. 26461