

LAND CORNER RECORDATION CERTIFICATE
Filing Requirement of Act 74, Mich. P.A. 1970

Approved by Menominee County
Land Survey Reauthorization
Peer Group Under Act 345 Of

P.A. of 1990 On 12/16 1996
William Lenca
Chairman

For corners in

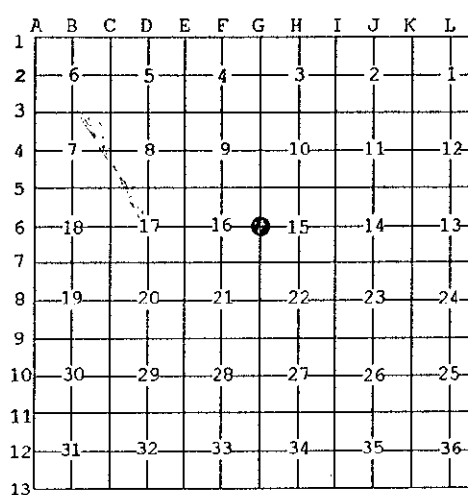
<u>MENOMINEE</u> (County)	Located In:	Corner Code #
1. Public Land Survey	T <u>33N</u> R <u>27W</u>	<u>G06</u>
	T <u> </u> R <u> </u>	<u> </u>
	T <u> </u> R <u> </u>	<u> </u>
	T <u> </u> R <u> </u>	<u> </u>
2. Property Controlling in Section	S <u> </u> T <u> </u> R <u> </u>	<u> </u>
	S <u> </u> T <u> </u> R <u> </u>	<u> </u>
3. Miscellaneous Property in Sec.	S <u> </u> T <u> </u> R <u> </u>	<u> </u>
	S <u> </u> T <u> </u> R <u> </u>	<u> </u>

RECEIVED FOR RECORD
96 DEC 20 AM 9:35
CASE # 398, BK 4
BARBARA MORRISON
REGISTER OF DEEDS
MENOMINEE COUNTY

Register of Deeds Stamp & File Number

4. Lot No. _____, Recorded Plat _____
5. Private Claims _____

I, William Lenca, in a field survey on Nov. 12, 1996 do hereby state that under requirements of P.A. 74, Michigan P.A. of 1970, the corner points mentioned in lines 1 and 2 above were in conformance with regulations and rules therefore as required in the current manual of survey instructions of the United States Department of the Interior, Bureau of Land Management or by a decree of a Court of Law and for that the corner points mentioned in lines 3, 4 and 5 above were in conformance with the rules of the Michigan Board of Land Surveyors or by a Decree of a Court of Law; established, re-established, monumented, recovered, found as expressed below:



NOTE: Not more than 2 corners, all in the same town and range, may be recorded on this certificate.

A. Description of original monument and accessories and/or subsequent restoration:

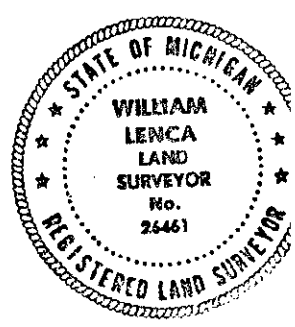
- 1848: Original Survey by John Mullett - B.T.'s - Tamarack, 10" - S65°E - 18 lks; Spruce, 07" - N47°W - 07 lks. No original evidence for this corner was recovered.
- 1900: Minutes Of Survey by Albert Hass, County Surveyor, states "Set 4" Cedar Post from Government B.T." No new B.T.'s are given.
- 1975: L.C.R.C. No. 91 by George B. Wilson, RLS No. 17607, states "Fd stump holes for both O.B.T.'s - swamp calls north 1.5 chs & south 2.00 chs fits well - Fd. squared off cedar tree, partly rotted - fits well with Haas survey dated Nov. 14-15, 1900." Set 2" dia. alum pipe with stamped cap - TIES: 3" Fir - 318° azm - 7.1'; 4" Fir - 252° azm - 3.9'; 7" Fir - 202° azm - 8.5'; 4" Fir - 60° azm - 7.3'.

B. Description of corner evidence found and/or method applied in restoring or reestablishing corner:

We found a 2 inch diameter aluminum pipe with a 3-1/4 inch diameter cap and 4 bearing trees as described in L.C.R.C. No. 91 (see part "A"). Measurements to corners East and North of this position match very closely with those shown in the 1900 Survey by Albert Hass. Since Hass had set this corner from an original B.T. and George B. Wilson recovered original evidence as well as evidence from Hass' survey, we accepted the corner as a careful and faithful perpetuation of the position of the original corner.

C. Description of monument for corner and accessories established to perpetuate locating the position of the corner:
Accepted existing 2" dia. Aluminum Pipe/3-1/4" dia. Alum cap stamped for corner location:

6" dia. Maple	N07°E	38.94 feet	Scr. NBT
9" dia. Black Spruce	S89°E	8.75 feet	Scr. NBT
5" dia. Maple	S09°W	28.91 feet	Scr. NBT
12" dia. Cedar	N86°W	47.38 feet	Scr. NBT
Metal Survey Sign Post	S45°W	1.1 feet	



NOTE: All bearings are magnetic bearings. All distances are measured with steel tape. Distances to trees are to nail in side of tree.

Signed by William Lenca
Surveyor's Michigan License No. 26461

Date Nov. 21, 1996